

SPARE PART LIST
FOR
RUSTON OIL ENGINES
Class VWO, VYO, VTO, VSO, VTOM and VSOM

The Illustrations in this List show all the parts of Engines for Classes VWO, VYO, VTO, VSO, VTOM and VSOM.

The book contains Two Indices; the first, page 3, shewing the Page Number of Various Grouped Parts, and the second, pages 4 to 7, the Part Numbers in numerical order opposite the number of the page upon which the part may be found.

The Page opposite each Illustration shews the Name of Part with its Part Number.

RUSTON & HORNSBY LTD.
Engineers LINCOLN England

Telegrams—RUSTON, LINCOLN

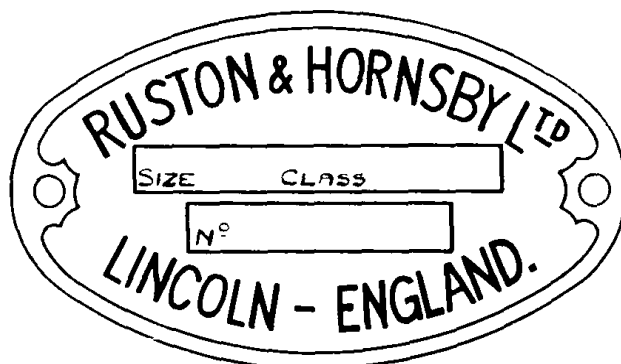
Telephone—LINCOLN 580

LONDON OFFICE:

IMPERIAL HOUSE, 15-17-19 KINGSWAY, W.C.2

Telegrams—RUSTON, ESTRAND, LONDON

Telephone—TEMPLE BAR 5865



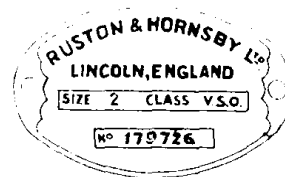
Instructions for Ordering a New Part

A PLATE, similar to that shown above, is fixed to the Engine; and, to order a New Part, give in all cases :—

- (1) The Number of the Part given in this List, prefixed by the Size Number and the Class Letter to be found on the Engine Plate, disregarding any other letters or figures which may be found on the actual engine part.
- (2) The Engine Number to be found on the Plate.

For Example :

Suppose a New Piston is required for a Two Cylinder Engine with an Engine Plate thus—



Order as follows :—

Supply New Piston 2VSO 81, Engine No. 179726.

Or, if cabling :—

UZLYG 179726.

The Part Number 81 and Code Word will be found on pages 16 and 17.

CLASS INDEX

	PAGE
Atomiser (C.A.V. Type)	19
Atomiser (Ruston Mark 37 Type)	19
Camshaft	17
Cooling water radiator and equipment (for VYO, VTO and VSO engines)	37
Crankshaft and flywheel, 1, 2, 3 and 4 cylinder engines ...	15
Crankshaft flexible coupling, 1 to 4 cylinder engines ...	15
Cylinder head and valve gear	9
Electric starter—Marine engines	41
Exhaust valve spragging gear	29
Exhaust and water manifolds, cartridge starter, air and exhaust silencers, and fuel tank	27
Fuel oil filter (single cylinder engines)	25
Fuel oil filter (multi-cylinder engines)	25
Fuel pipe	30
Fuel pump	23
Fuel pump cut-out and speeder control gear—Loco engines	21
Governor gear	19
Governor and speeder gear—Marine engines	21
Hand starter and speeder gear—Marine engines	39
Housing and liner	11
Housing and liner—Marine engines	13
Lubricating oil pump	27
Lubricating oil pipe rail	29
Piston and connecting rod	17
Reduction gear	46
Reversing gear—Marine engines	43
Service fuel tank—Marine engines	47
Speeder control gear and fuel pump cut-out—Loco engines	21
Speeder gear	29
Stern gear (Standard)	45
Water circulator	31
Water circulating pump—Marine engines (early plunger type)	33
Water circulating pump—Marine engines (later plunger type)	35
Water circulating pump—Marine engines (rotary type) ...	37

PART NUMBER INDEX

PART NO.	PAGE NO.	PART NO.	PAGE NO.	PART NO.	PAGE NO.
VO 1	9	VO 719	29	VO 2186	9
„ 2	11, 13	„ 725	19	„ 2257	27
„ 3	11, 13	„ 738	17	„ 2263	37
„ 6	9	„ 814	23	„ 2524	27
„ 12	9	„ 815	23	„ 2738	29
„ 27	9	„ 827	23	„ 2812	9
„ 28	9	„ 892	19	„ 2857	17
„ 30	9	„ 893	19	„ 2873	9
„ 32	9	„ 900	17	„ 2875	9
„ 37	9	„ 901	17	„ 2920	11, 13
„ 44	9	„ 915	11, 13	„ 2921	11, 13
„ 46	9	„ 917	9	„ 2931	11, 13
„ 48	9	„ 927	9	„ 2932	11, 13
„ 50	9	„ 964	19	„ 2945	21, 23, 29
„ 64	11, 13	„ 965	19	„ 2969	37
„ 66	11, 13	„ 969	19	„ 2971	37
„ 68	11, 13	„ 971	19	„ 2972	37
„ 75	11, 13, 29	„ 1039	27	„ 2974	37
„ 78	11	„ 1078	25	„ 2975	37
„ 81	17	„ 1117	9	„ 2989	23
„ 84	17	„ 1119	11, 13	„ 3011	21
„ 85	17	„ 1135	11	„ 3055	25
„ 91	9	„ 1149	31	„ 3094	19
„ 97	15	„ 1150	31	„ 3214	27
„ 106	23	„ 1153	11	„ 3266	17
„ 111	19	„ 1155	27	„ 3330	27
„ 161	11, 13	„ 1156	27	„ 3331	27
„ 200	17	„ 1157	27	„ 3370	21
„ 201	17	„ 1158	27	„ 3376	19
„ 202	17	„ 1177	15	„ 3506	29
„ 205	17	„ 1198	11, 37	„ 3508	15
„ 207	17	„ 1233	19	„ 3509	21, 23, 29
„ 208	17	„ 1244	31	„ 3518	15
„ 224	27	„ 1245	31	„ 3531	21, 23, 29
„ 235	15	„ 1248	31	„ 3555	27, 37
„ 242	15	„ 1251	31	„ 3573	27
„ 243	15	„ 1385	25	„ 3574	15
„ 257	9, 27	„ 1386	25	„ 3575	15
„ 261	11, 13	„ 1389	25	„ 3605	27
„ 262	11, 13	„ 1627	9	„ 3962	9
„ 271	11	„ 1663	9	„ 4021	11
„ 426	25	„ 1676	25	„ 4051	29, 31
„ 439	27	„ 1681	31	„ 4053	11, 13
„ 440	27	„ 1756	29	„ 4130	19
„ 483	27	„ 1762	27	„ 4222	29
„ 687	25	„ 1810	19	„ 4251	29
„ 701	19	„ 1901	15	„ 4265	25
„ 704	19	„ 1910	31	„ 4266	25
„ 710	19, 21, 29	„ 1994	11, 13	„ 4267	25
„ 713	29	„ 2114	11	„ 4268	25
„ 715	21	„ 2125	27	„ 4269	29
„ 716	19	„ 2182	29	„ 4282	25

PART NUMBER INDEX -continued.

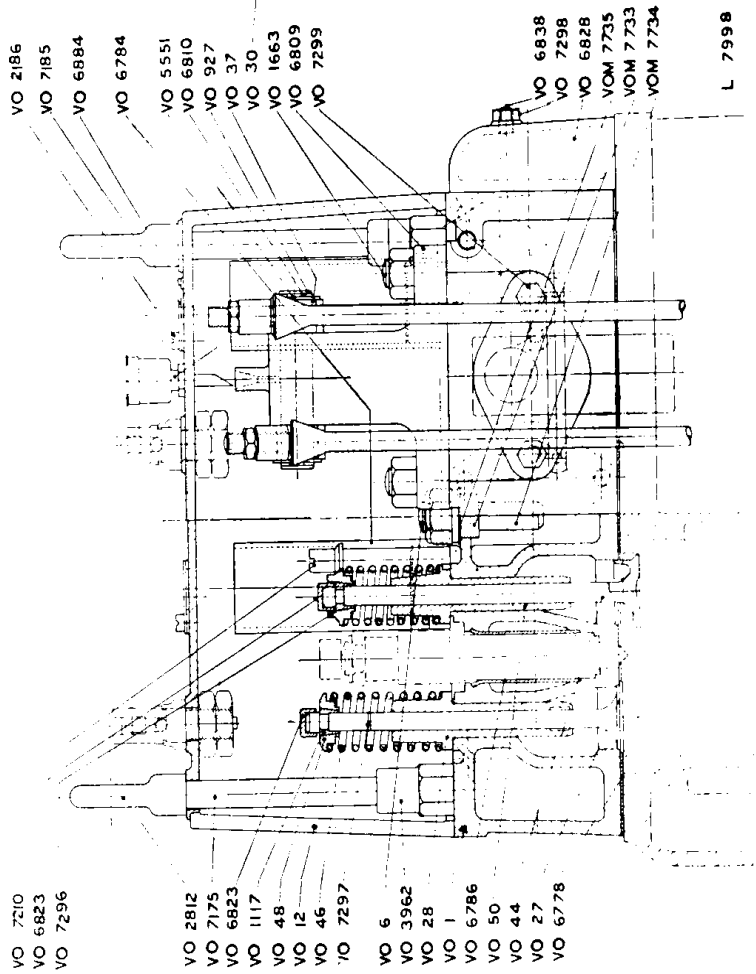
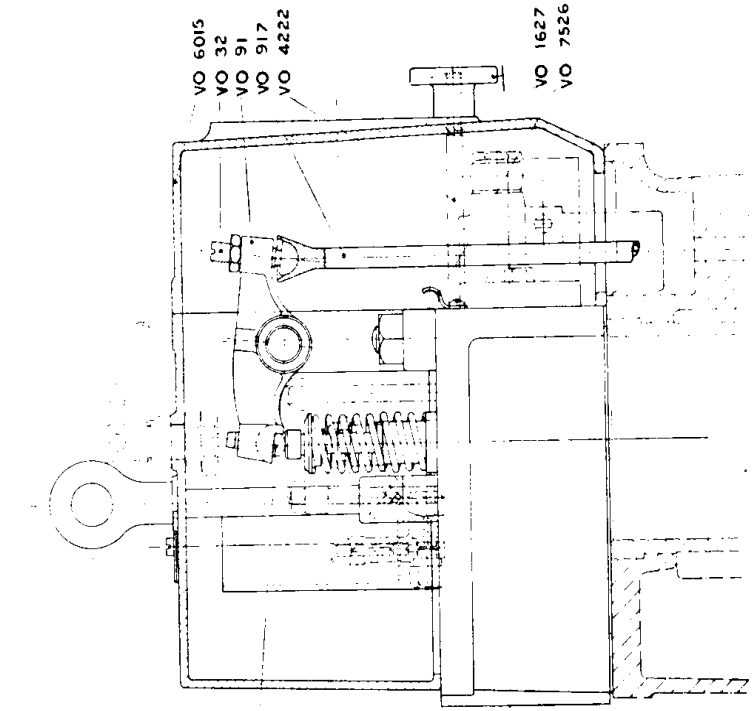
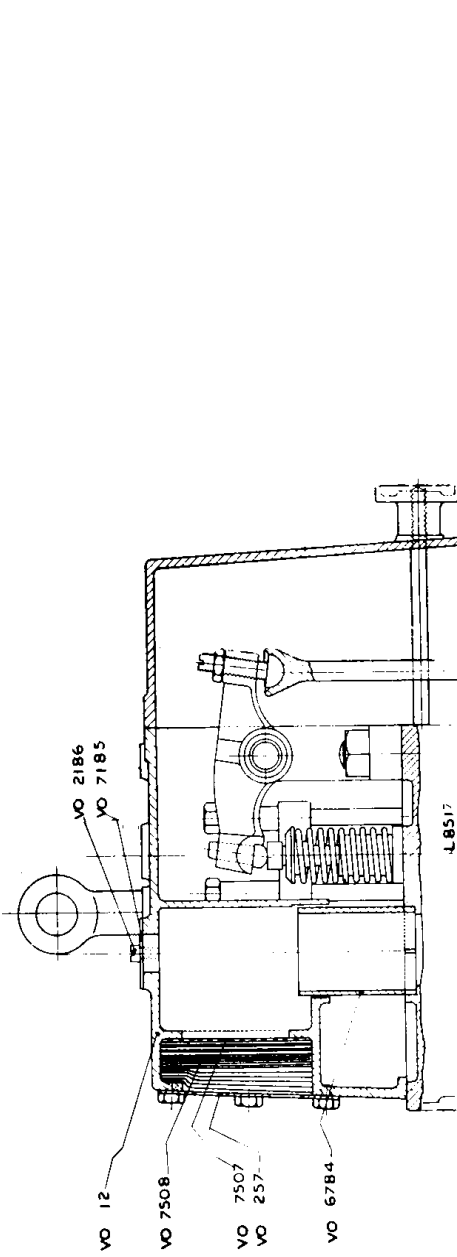
PART NO.	PAGE NO.	PART NO.	PAGE NO.	PART NO.	PAGE NO.
VO 4323	25	VO 6784	9	VO 7251	27
„ 4341	25	„ 6786	9	„ 7252	27
„ 4357	15	„ 6787	11	„ 7253	27
„ 4360	15	„ 6789	21, 29	„ 7254	27
„ 4635	19	„ 6809	9	„ 7255	27
„ 4832	27	„ 6810	9	„ 7262	11
„ 4833	27	„ 6820	29	„ 7268	23
„ 4834	27	„ 6823	9	„ 7274	29
„ 4936	11	„ 6828	9	„ 7275	29
„ 4971	29	„ 6831	11, 13	„ 7295	29
„ 5066	11	„ 6832	11	„ 7296	9
„ 5131	15	„ 6833	11, 13	„ 7297	9
„ 5136	23	„ 6834	11	„ 7298	9
„ 5137	23	„ 6835	23	„ 7299	9
„ 5196	37	„ 6837	15	„ 7315	37
„ 5208	30	„ 6838	9	„ 7316	37
„ 5228	27	„ 6841	11, 13	„ 7322	31, 37
„ 5236	29	„ 6842	11, 13	„ 7323	15
„ 5252	27	„ 6848	23	„ 7357	23
„ 5256	27	„ 6876	29	„ 7358	11
„ 5399	25	„ 6881	29	„ 7469	27
„ 5406	25	„ 6884	9	„ 7483	11
„ 5416	11, 29	„ 6906	27	„ 7507	9, 27
„ 5452	23	„ 6913	23	„ 7508	9, 27
„ 5453	23	„ 6915	23	„ 7526	9
„ 5456	23	„ 6989	19	„ 7527	25
„ 5551	9	„ 6990	19	„ 7534	23
„ 5558	15	„ 6993	11, 13	„ 7546	11, 23
„ 5717	27	„ 6994	11	„ 7614	37
„ 5827	11, 13, 29	„ 6995	29	„ 7643	31
„ 5911	37	„ 7022	17	„ 7644	31
„ 6015	9	„ 7024	17	„ 7645	31
„ 6042	27	„ 7099	23	„ 7646	31
„ 6057	23, 30	„ 7100	11	„ 7647	31
„ 6058	21, 23, 29	„ 7103	17	„ 7648	31
„ 6059	23, 29	„ 7121	15	„ 7649	31
„ 6085	29	„ 7124	23, 25	„ 7650	31
„ 6086	29	„ 7127	25	„ 7651	31
„ 6170	15	„ 7128	25	„ 7652	31
„ 6193	21	„ 7132	21	„ 7704	30
„ 6205	21	„ 7133	19	„ 7705	30
„ 6225	23	„ 7134	9	„ 7706	30
„ 6237	23	„ 7175	9	„ 7707	30
„ 6238	23	„ 7185	9	„ 7725	23
„ 6566	11, 13, 29	„ 7209	25	„ 7745	25
„ 6664	23	„ 7210	9	„ 7803	25
„ 6692	25	„ 7212	23	„ 7837	25
„ 6768	23	„ 7244	11, 29	„ 7838	25
„ 6773	19	„ 7229	23	„ 7842	23
„ 6774	29	„ 7245	11, 13, 29	„ 7856	25
„ 6776	23	„ 7246	11	„ 7866	11
„ 6778	9	„ 7247	11, 13	„ 7982	23
„ 6780	17	„ 7248	17	„ 7983	11

PART NUMBER INDEX—*continued.*

PART NO.	PAGE NO.	PART NO.	PAGE NO.	PART NO.	PAGE NO.
VO 7986	23	VOM 1249	37	VOM 5816	41
„ 7987	25	„ 2114	13	„ 5817	41
„ 7988	25	„ 2183	47	„ 5818	41
„ 7989	25	„ 2997	35	„ 5819	41
„ 8032	25	„ 3336	33, 35	„ 5820	41
„ 8036	27	„ 3849	33, 35	„ 5821	41
„ 8101	37	„ 3853	33, 35	„ 5823	41
„ 8117	37	„ 3856	33	„ 5919	39
„ 8119	25	„ 3857	33, 35	„ 5920	39
„ 8120	25	„ 3861	35	„ 5923	39
„ 8121	25	„ 3869	35	„ 5926	39
„ 8122	25	„ 3871	33, 35	„ 5977	33
„ 8137	37	„ 3874	33	„ 5978	35
„ 8138	37	„ 3980	33, 35	„ 5980	35
„ 8139	37	„ 4051	37	„ 5984	35
„ 8140	37	„ 4110	33	„ 6016	35, 39
„ 8141	37	„ 4116	33	„ 6059	41
„ 8166	15	„ 4548	33	„ 6133	33, 35
„ 8167	15	„ 4646	41	„ 6191	21
„ 8168	15	„ 4750	21	„ 6787	13
„ 8169	15	„ 4860	21, 39	„ 7084	13
„ 8170	15	„ 4864	39	„ 7246	13
„ 8177	15	„ 4923	21	„ 7258	37
„ 8209	37	„ 4936	13	„ 7260	37
„ 8247	25	„ 4948	43	„ 7502	13
„ 8248	25	„ 4949	43	„ 7536	33, 35
„ 8304	11	„ 4950	43	„ 7537	33
„ 8305	11	„ 4954	39	„ 7538	33
„ 8306	11	„ 4959	39	„ 7546	35
„ 8320	31	„ 4960	39	„ 7598	35
„ 8383	37	„ 4964	39	„ 7599	13
„ 8384	37	„ 5022	47	„ 7600	13
„ 8385	37	„ 5066	13	„ 7602	33, 35
„ 8543	17	„ 5067	13	„ 7610	35
„ 8751	21	„ 5069	39	„ 7713	33, 35
„ 9117	23	„ 5093	39	„ 7714	33
„ 9118	23	„ 5125	33, 35	„ 7715	33
„ 9119	23	„ 5129	33, 35	„ 7716	33, 35
		„ 5130	35	„ 7717	33
VOM 71	13	„ 5152	39	„ 7718	39
„ 78	13	„ 5153	39	„ 7719	39
„ 235	15	„ 5345	35	„ 7720	39
„ 692	21, 39	„ 5357	41	„ 7733	9, 13
„ 695	21	„ 5359	41	„ 7734	9, 13
„ 713	21	„ 5360	13	„ 7735	9, 13
„ 714	21	„ 5381	35	„ 7979	39
„ 719	21	„ 5422	39	„ 7980	47
„ 720	21, 39	„ 5548	41	„ 7981	47
„ 1135	13	„ 5755	33, 35	„ 7984	13
„ 1149	37	„ 5768	33, 35	„ 8283	35
„ 1244	37	„ 5810	41	„ 8316	21
„ 1245	37	„ 5814	41	„ 8317	21
„ 1247	37	„ 5815	41	„ 8593	35

PART NUMBER INDEX—*continued.*

PART NO.	PAGE NO.	PART NO.	PAGE NO.	PART NO.	PAGE NO.
VOM 8594	35	WG 29	43	SG 14	45
.. 8745	21	.. 30	43	.. 16	45
.. 8746	21	.. 33	43	.. 17	45
.. 8747	21	.. 34	43	.. 18	45
.. 8748	21	.. 36	43	.. 19	45
.. 8749	21	.. 40	43	.. 20	45
.. 9072	37	.. 43	43	.. 21	45
.. 9073	37	.. 50	43	.. 23	45
.. 9074	37	.. 52	43	.. 47	45
		.. 53	43	.. 50	45
VOL 719	21	.. 54	43	.. 53	45
.. 827	21	.. 55	43	.. 54	45
.. 3370	21	.. 58	43	.. 55	45
.. 6191	21	.. 62	43	.. 56	45
		.. 99	43	.. 57	45
VRO 892	19	.. 102	43	.. 101	45
.. 893	19	.. 114	43	.. 102	45
.. 894	19	.. 115	43	.. 103	45
.. 954	19	.. 116	43	.. 104	45
.. 963	19	.. 117	43	.. 105	45
.. 965	19	.. 118	43	.. 106	45
.. 966	19	.. 119	43	.. 110	45
.. 967	19	.. 121	43	.. 113	45
.. 968	19	.. 122	43	.. 114	45
.. 970	19	.. 123	43	.. 115	45
.. 974	19	.. 125	43	.. 116	45
.. 1233	19	.. 126	43	.. 117	45
.. 1810	19	.. 127	43		
.. 2291	19	.. 133	43	RG 5	46
.. 2950	19	.. 134	43	.. 24	46
.. 4221	9	.. 135	43	.. 41	46
.. 7141	19	.. 138	43	.. 45	46
.. 7159	19	.. 144	43	.. 46	46
.. 7160	19	.. 157	43	.. 47	46
.. 7200	19	.. 158	43	.. 48	46
		.. 160	43	.. 49	46
WG 5	43	.. 179	43	.. 51	46
.. 7	43	.. 180	43	.. 52	46
.. 9	43	.. 188	43	.. 53	46
.. 10	43	.. 189	43	.. 54	46
.. 11	43	.. 219	43	.. 69	46
.. 12	43	.. 250	43	.. 71	46
.. 13	43			.. 91	46
.. 14	43	SG 2	45	.. 92	46
.. 16	43	.. 3	45	.. 93	46
.. 17	43	.. 5	45	.. 94	46
.. 18	43	.. 6	45	.. 95	46
.. 21	43	.. 7	45	.. 97	46
.. 22	43	.. 8	45	.. 99	46
.. 23	43	.. 10	45	.. 100	46
.. 25	43	.. 11	45	.. 101	46
.. 26	43	.. 12	45	.. 102	46
.. 27	43	.. 13	45	.. 104	46



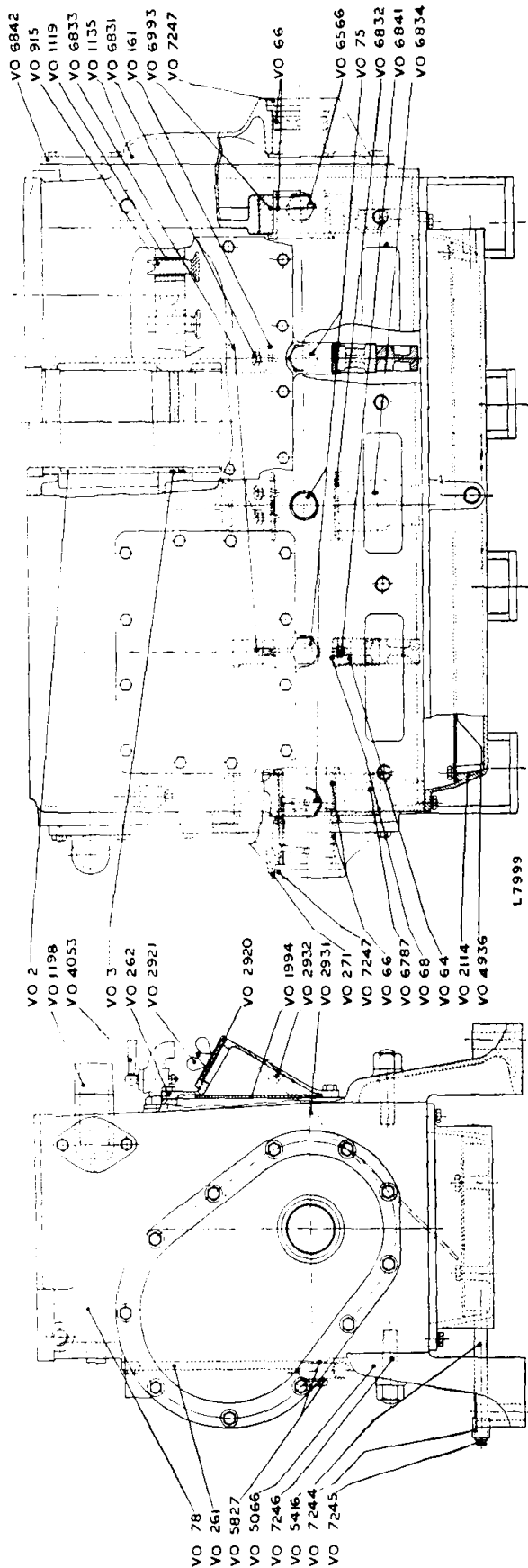
- VO 7210
- VO 6823
- VO 7296

- VO 2812
- VO 7175
- VO 6823
- VO 1117
- VO 48
- VO 12
- VO 46
- VO 7297
- VO 6
- VO 3962
- VO 28
- VO 1
- VO 6786
- VO 50
- VO 44
- VO 27
- VO 6778

CYLINDER HEAD AND VALVE GEAR.

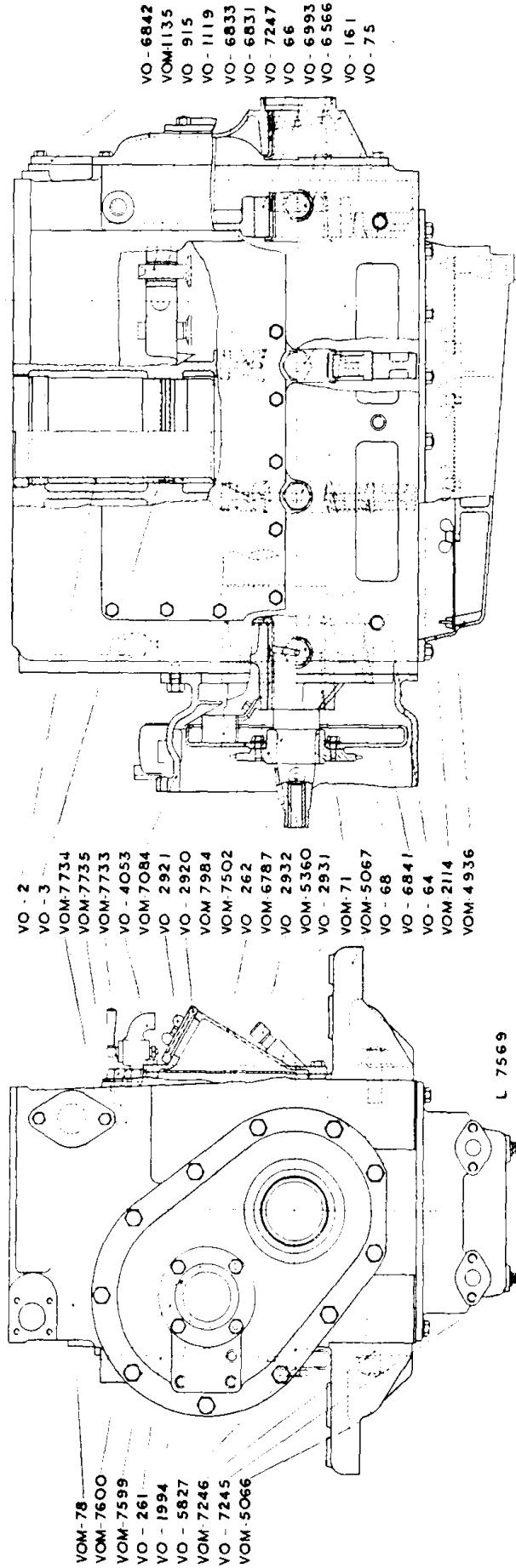
PART NO.	CODE WORD	DESCRIPTION	PART NO.	CODE WORD	DESCRIPTION
VO—1	UZINA	Cylinder head	VO—4222	UZIRX	Cylinder head cover studs (short)
VO—6	UZINI	Cylinder head studs	VO—5551	UZISO	Rocking lever fulcrum pin washers
VO—12	UZINK	Cylinder head cover	VO—6015	UZISP	Cylinder head and housing cover
VO—27	UZINS	Exhaust valve	VO—6778	UZIST	Cylinder head and housing gasket
VO—28	UZINY	Exhaust valve guide	VO—6784	UZISY	Air inlet guard
VO—30	UZIOD	Valve striking pin	VO—6786	UZITA	Atomiser shield
VO—32	UZIOH	Inlet and exhaust valve lever adjusting screw	VO—6809	UZITI	Rocking lever bracket
VO—37	UZIOJ	Rocking lever bush	VO—6810	UZITY	Spring clips for rocking lever fulcrum pin
VO—44	UZIOK	Air inlet valve	VO—6823	UZIUD	Inlet and exhaust valve stem cap
VO—46	UZION	Inlet and exhaust valve spring	VO—6828	UZIUJ	Small valve gear cover (gear end)
VO—48	UZIOR	Exhaust valve spring retaining collar	VO—6838	UZIUK	Studs for small valve gear cover
VO—50	UZIOX	Air inlet valve guide	VO—6884	UZIUN	Rocking lever oil cup
VO—91	UZIOZ	Inlet and exhaust valve rocking lever	VO—7134	UZIUR	Cylinder head and housing shims (not illustrated)
VO—257	UZIPA	Air filter cover	VO—7175	UZIUT	Stud for cylinder head cover and lifting eye
VO—917	UZIPH	Rocking lever push rod	VO—7185	UZIUV	Cylinder head cover priming lid
VO—927	UZUPI	Inlet and exhaust valve rocking lever fulcrum pin	VO—7210	UZIUX	Guide pin for air inlet valve locating details
VO—1117	UZIPT	Inlet and exhaust valve spring retaining cone	VO—7296	UZIVI	Air inlet valve spring retaining collar
VO—1627	UZIPY	Cylinder head cover stud nut	VO—7297	UZIVY	Inlet and exhaust valve safety ring
VO—1663	UZIRB	Rocking lever bracket studs	VO—7298	UZIWA	Nuts for small valve gear cover
VO—2186	UZIRC	Cylinder head cover priming lid screw	VO—7299	UZIWI	Fuel pump retaining setscrews
VO—2812	UZIRF	Engine lifting eye bolts	VO—7507	UZIXE	Air filter perforated plate
*VO—2873	UZIRL	Plug for cartridge holder hole	VO—7508	UZIXO	Air filtering pad
*VO—2875	UZIRM	Locking nut for plug	VO—7526	UZIYE	Atomiser leak pipe rail clip
VO—3962	UZIRP	Special cylinder head nuts for cover stud and lifting eye	VOM—7733	UZIYR	Protector plug (Marine engine only)
VRO—4221	UZIRS	Stud for special nut and cylinder head cover, 4 cylinder engines only (not illustrated)	VOM—7734	UZIYT	Zinc rod (Marine engine only)
			VOM—7735	UZIYU	Protector plug joint ring (Marine engine only)

*Not fitted to latest engines and not illustrated



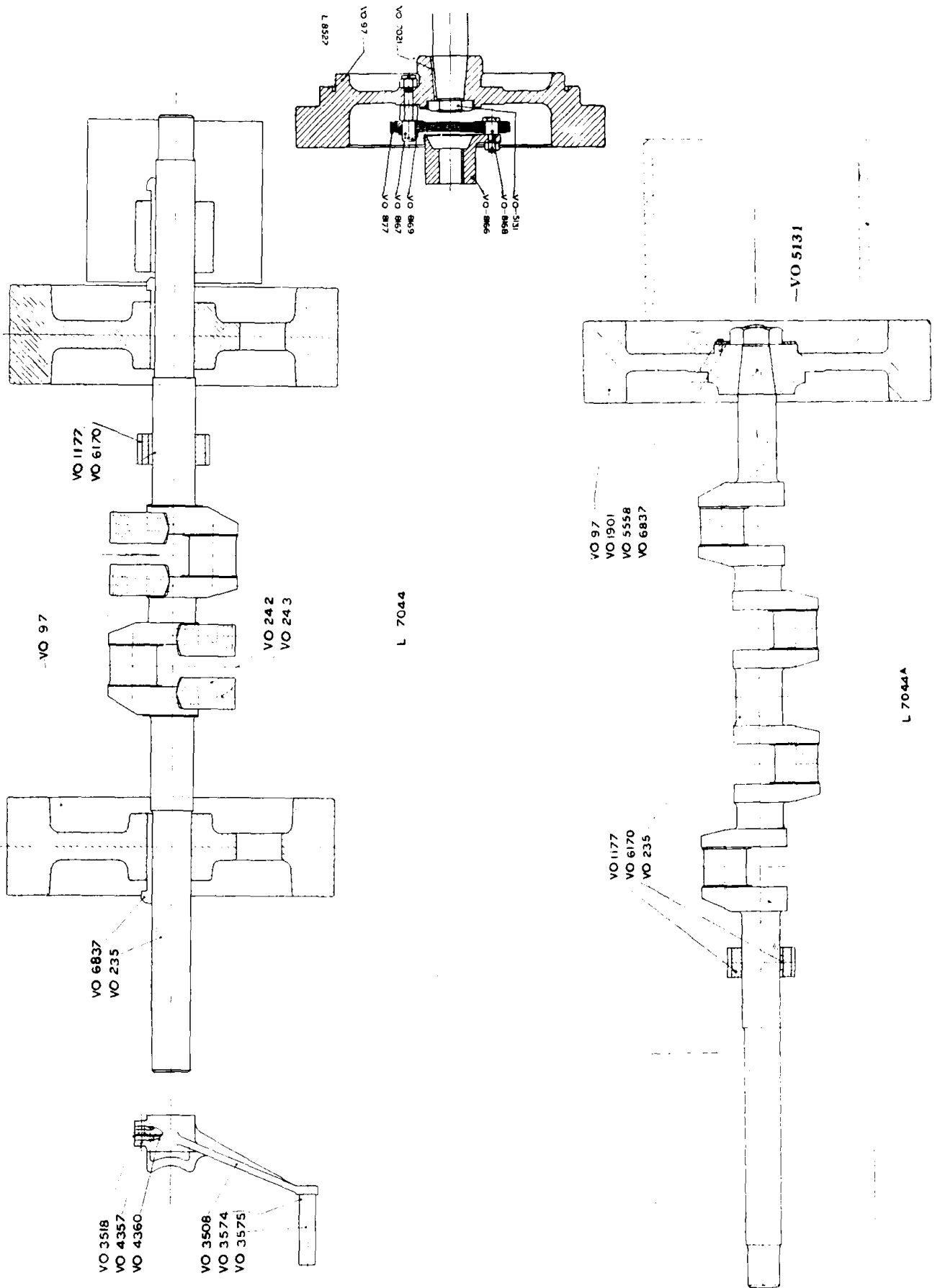
HOUSING AND LINER.

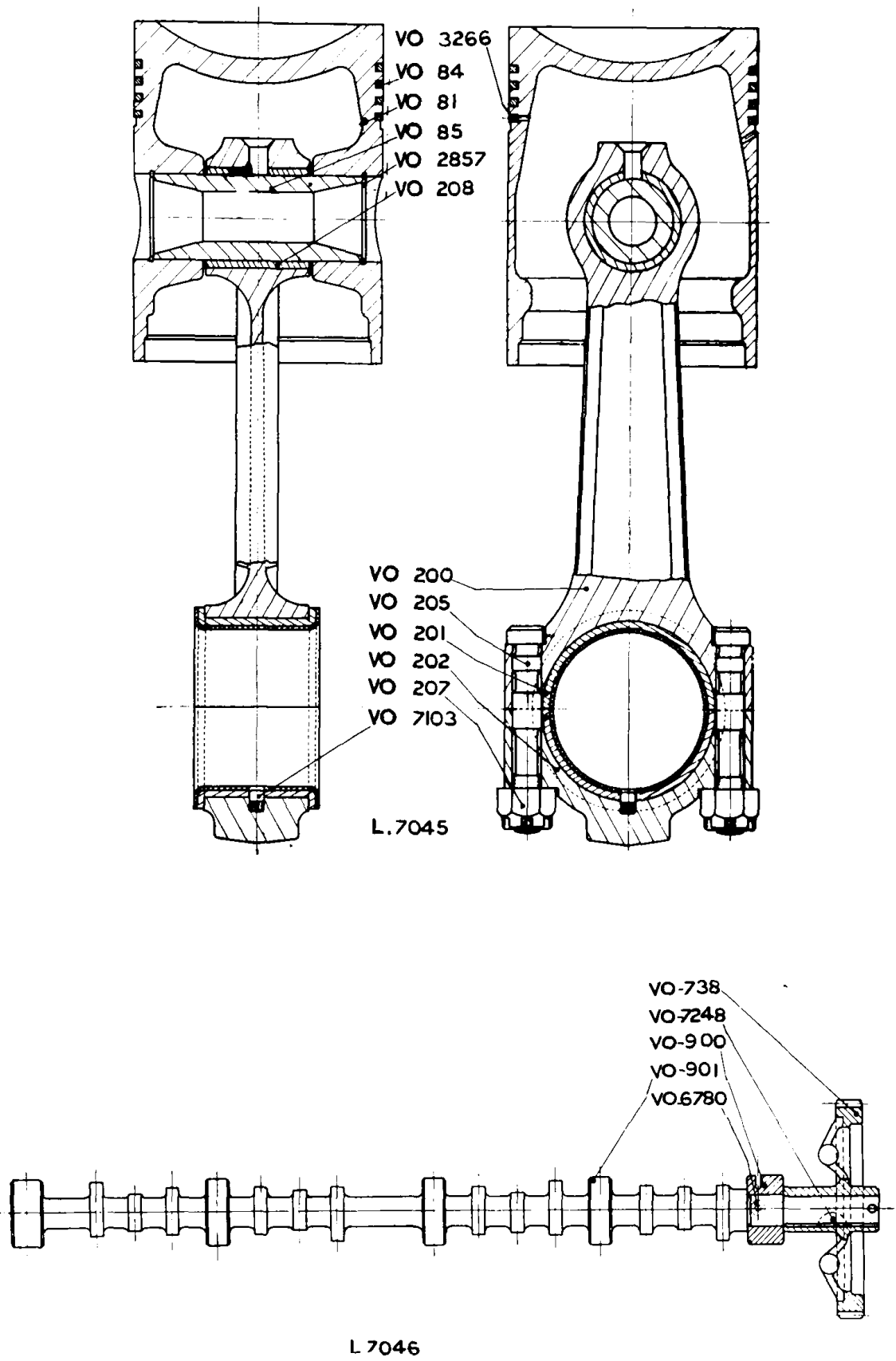
PART NO.	CODE WORD	DESCRIPTION	PART NO.	CODE WORD	DESCRIPTION
VO— 2	UZIZI	Cylinder liner	VO—5827	UZJOB	Lubricating oil pipe rail and connection copper joint
VO— 3	UZIZY	Cylinder liner rubber joint ring	VO—6566	UZJOC	Main bearing lubricating oil connection
VO— 64	UZJAH	Main bearing housing intermediate 3 and 4 cyl. engines	VO—6787	UZJOF	Main bearing housing (opposite gear end)
VO— 66	UZJAJ	Main bearing bush	VO—6831	UZJOL	Setscrew for main centre bearing housing
VO— 68	UZJAK	Main bearing bush intermediate 3 and 4 cyl. engines	VO—6832	UZJOM	Main centre bearing bush, 4 cyl. engines only
VO— 75	UZJAN	Main bearing lubricating oil connection and stop	VO—6833	UZJOP	Main bearing housing (thrust), 2, 3 and 4 cyl. engines
VO— 78	UZJAR	Cylinder housing	VO—6834	UZJOS	Main centre bearing housing, 4 cyl. engines only
VO— 161	UZJAT	Main bearing thrust bush, 2, 3 and 4 cyl. engines	VO—6841	UZJOY	Locating peg for centre bearing
VO— 261	UZJAV	Housing door (camshaft side)	VO—6842	UZJUC	Water inlet blank flange
VO— 262	UZJAX	Housing door and oil filler	VO—6993	UZJUF	Main bearing housing gear end
VO— 271	UZJEB	Crankshaft end cover (opposite gear end)	VO—6994	UZJUG	Main bearing locating peg (gear end) (not illustrated)
VO— 915	UZJEC	Inlet and exhaust valve tappet bush	VO— 7100	UZJUL	Atomiser leak connection in housing (not illustrated)
VO— 1119	UZJEF	Inlet and exhaust valve tappet	VO—7244	UZJUM	Housing sump drain pipe socket
VO— 1135	UZJEG	Crankshaft end cover (gear end)	VO—7245	UZJUS	Housing sump drain pipe plug
VO— 1153	UZJEL	Housing blank door (opposite camshaft side, 4 cylinder engines only) (not illustrated)	VO—7246	UZJUY	Stud for engine bearer
VO— 1198	UZJEM	Water outlet elbow	VO—7247	UZJYE	Gifts oil seal ring
VO— 1994	UZJEP	Filler oil strainer	VO—7262	UZJYK	Oil sump dipstick washer (not illustrated)
VO— 2114	UZJES	Housing sump	VO—7358	UZJYO	Plug for lub. oil hole in camshaft bearing (not illustrated)
VO— 2920	UZJEW	Oil filler cover	VO—7483	UZJYR	Oil guard in housing (not illustrated)
VO— 2921	UZJID	Wing nut for lubricating oil filler cover	VO—7546	UZJYT	Joint ring for oil hole plug (not illustrated)
VO— 2931	UZJIK	Oil sump dipstick knob	VO—7866	UZJYU	Atomiser drip can bracket (not illustrated)
VO— 2932	UZJIN	Oil sump dipstick	VO—7983	UZKAH	Atomiser drip can (not illustrated)
VO— 4021	UZJIR	Housing sump drain plug (not illustrated)	VO—8304	UZKAJ	Atomiser drip can (not illustrated)
VO— 4053	UZJIT	Water jacket drain tap	VO—8305	UZKAN	Atomiser drip can lid (not illustrated)
VO— 4936	UZJIV	Housing sump strainer	VO—8306	UZKAR	Atomiser drip can hook (not illustrated)
VO— 5066	UZJIX	Engine bearer			
VO— 5416	UZJIZ	Housing sump drain pipe			



HOUSING AND LINER—MARINE ENGINES.

PART NO.	CODE WORD	DESCRIPTION	PART NO.	CODE WORD	DESCRIPTION
VO — 2	UZKAT	Cylinder liner	VOM—5067	UZKOG	Engine bearer (port side)
VO — 3	UZKAV	Cylinder liner rubber joint ring	VOM—5860	UZKOL	Dynamo drive sprocket
VO — 64	UZKAX	Main bearing housing intermediate, 3 cylinder engine	VO — 5827	UZKOM	Lub. oil pipe rail and connection copper joints
VO — 66	UZKAZ	Main bearing bush	VO — 6566	UZKOP	Main bearing lub. oil connection
VO — 68	UZKEB	Main bearing bush intermediate, 3 cylinder engine	VOM—6787	UZKOS	Main bearing housing (opposite gear end)
VOM— 71	UZKEC	Main bearing bush (opposite gear end)	VO — 6831	UZKUC	Main bearing housing setscrew
VO — 75	UZKEF	Main bearing lub. oil connection and stop	VO — 6833	UZKUF	Main bearing housing (thrust)
VOM— 78	UZKEG	Cylinder housing	VO — 6841	UZKUG	Locating peg on centre bearing
VO — 161	UZKEM	Main bearing thrust bush	VO — 6842	UZKUL	Water inlet blank flange
VO — 261	UZKEP	Housing door (camshaft side)	VO — 6993	UZKUM	Main bearing housing (gear end)
VO — 262	UZKES	Housing door (opposite camshaft side)	VOM—7084	UZKUP	Reverse gear oil thrower and chain casing
VO — 915	UZKEW	Inlet and exhaust valve tappet	VO — 7245	UZKUS	Housing sump drain plug
VO — 1119	UZKID	Inlet and exhaust valve tappet bush	VOM—7246	UZKUY	Stud for engine bearer
VOM—1135	UZKIJ	Crankshaft end cover (gear end)	VO — 7247	UZKYE	Gits oil seal ring
VO — 1994	UZKIK	Filler oil strainer	VOM—7502	UZKYK	Oil thrower disc
VOM—2114	UZKIN	Housing sump	VOM—7599	UZKYU	Water circulating pump crank bearing
VO — 2920	UZKIR	Oil filler cover	VOM—7600	UZLAC	Water circulating pump crank bearing felt washer
VO — 2921	UZKIT	Oil filler cover wing nut	VOM—7733	UZLAF	Protector plug
VO — 2931	UZKIX	Oil sump dipstick	VOM—7734	UZLAG	Protector plug zinc rod
VO — 2932	UZKIZ	Oil sump dipstick knob	VOM—7735	UZLAL	Protector plug joint ring
VO — 4053	UZKOB	Water jacket drain tap	VOM—7984	UZLAM	Oil scraper
VOM—4936	UZKOC	Housing sump strainer			
VOM—5066	UZKOF	Engine bearer (starboard side)			



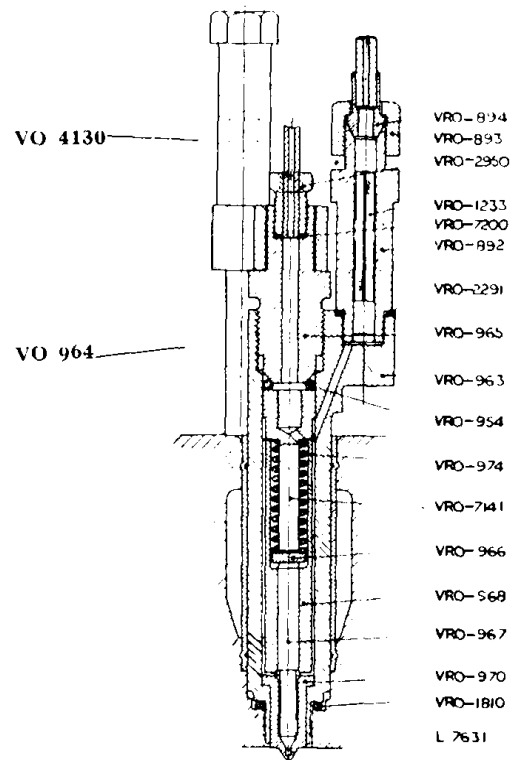
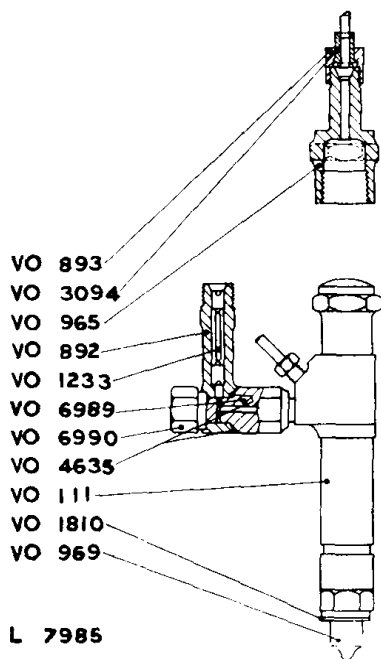
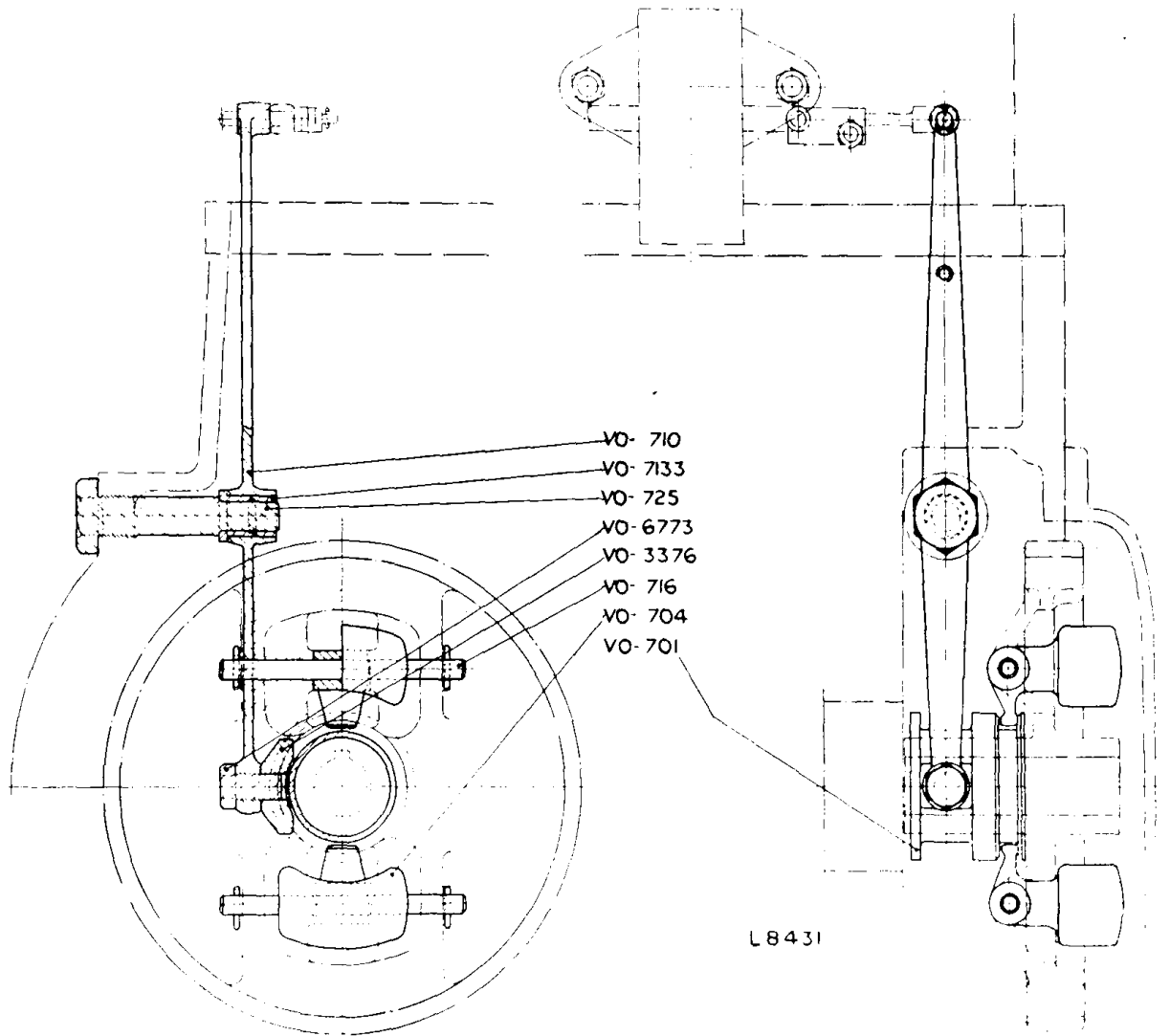


PISTON AND CONNECTING ROD.

PART NO.	CODE WORD	DESCRIPTION
VO— 81	UZLYG	Piston
VO— 84	UZLYI	Piston ring
VO— 85	UZLYL	Piston pin
VO— 200	UZLYM	Connecting rod
VO— 201	UZLYS	Connecting rod large end bearing (in halves)
VO— 202	UZMAC	Connecting rod large end bearing cap
VO— 205	UZMAF	Connecting rod bolt
VO— 207	UZMAG	Connecting rod castle nut
VO— 208	UZMAM	Connecting rod small end bush
VO—2857	UZMAP	Piston pin circlip
VO—3266	UZMAS	Piston scraper ring
VO—7103	UZMAW	Dowell peg for large end bearing

CAMSHAFT.

PART NO.	CODE WORD	DESCRIPTION
VO— 738	UZMED	Camshaft gearwheel
VO— 900	UZMEH	Camshaft locating bush
VO— 901	UZMEJ	Camshaft
VO—6780	UZMEK	Camshaft locating bush pin
VO—7022	UZMEN	Camshaft gearwheel setscrew (not illustrated)
VO—7024	UZMER	Camshaft gear wheel setscrew washer (not illustrated)
VO—7248	UZMEV	Camshaft gearwheel feather key
VO—8543	UZMIC	Spring retaining ring for split taper pin in camshaft (not illustrated)



GOVERNOR GEAR.

PART NO.	CODE WORD	DESCRIPTION
VO— 701	UZMIF	Governor sleeve
VO— 704	UZMIG	Governor weight
VO— 710	UZMIL	Governor lever
VO— 716	UZMIM	Governor weight fulcrum pin
VO— 725	UZMIP	Governor lever fulcrum pin
VO— 3376	UZMIS	Governor lever die
VO— 6773	UZMIY	Governor lever die pin
VO— 7133	UZMOD	Governor lever bush

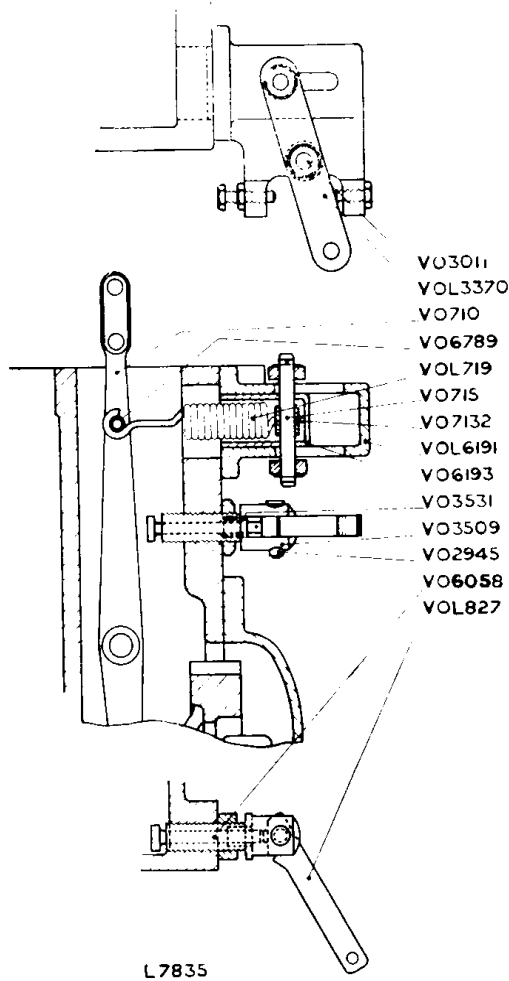
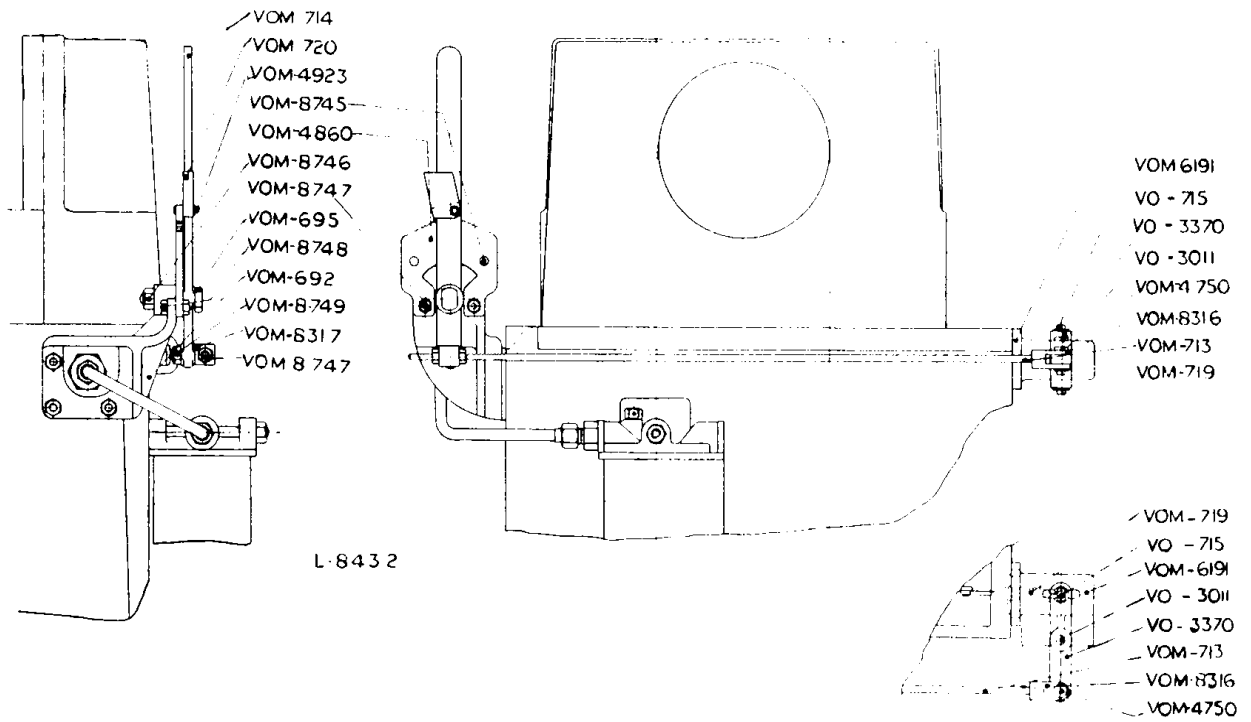
ATOMISER (C.A.V. Type).

PART NO.	CODE WORD	DESCRIPTION
VO— 111	UZMOJ	Atomiser complete
VO— 892	UZMOK	Atomiser filter body
VO— 893	UZMON	Atomiser union nut
VO— 965	UZMOR	Atomiser overflow connection (when taken from top)
VO— 969	UZMOT	Atomiser nozzle
VO— 1233	UZMOX	Atomiser filter element
VO— 1810	UZMOZ	Atomiser joint ring
VO— 3094	UZMUD	Atomiser union nipple
VO— 4635	UZMUK	Atomiser filter internal joint ring
VO— 6989	UZMUN	Atomiser filter connection
VO— 6990	UZMUT	Atomiser filter connection locking nut

ATOMISER (Ruston Mark 37 Type)

PART NO.	CODE WORD	DESCRIPTION
VRO— 892	UZMUV	Atomiser delivery connection and filter body
VRO— 893	UZMUX	Atomiser delivery pipe union nut
VRO— 894	UZMUZ	Atomiser delivery pipe nipple
VRO— 954	UZMYA	Atomiser plug copper joint ring
VRO— 963	UZMYB	Atomiser body
VO — 964	UZMYC	Atomiser stud
VRO— 965	UZMYF	Atomiser plug
VRO— 966	UZMYG	Atomiser spring washer
VRO— 967	UZMYI	Atomiser needle valve
VRO— 968	UZMYM	Atomiser needle valve guide
VRO— 970	UZMYS	Atomiser nozzle
VO — 971	UZNAH	Atomiser flange (not illustrated)
VRO— 974	UZNAJ	Atomiser spring
VRO— 1233	UZNAK	Atomiser edge type filter
VRO— 1810	UZNAN	Atomiser copper joint seat
VRO— 2291	UZNAR	Atomiser delivery connection copper washer
VRO— 2950	UZNAT	† Atomiser overflow union
VO — 4130	UZNAV	Atomiser stud sleeve nut
VRO— 7141	UZNAX	Atomiser needle stop
VRO— 7159	UZNEC	Atomiser clamp (not illustrated)
VRO— 7160	UZNEF	Atomiser clamp stud (not illustrated)
VRO— 7200	UZNEG	Atomiser overflow union copper washer

† on latest engines nipple and nut fitted.

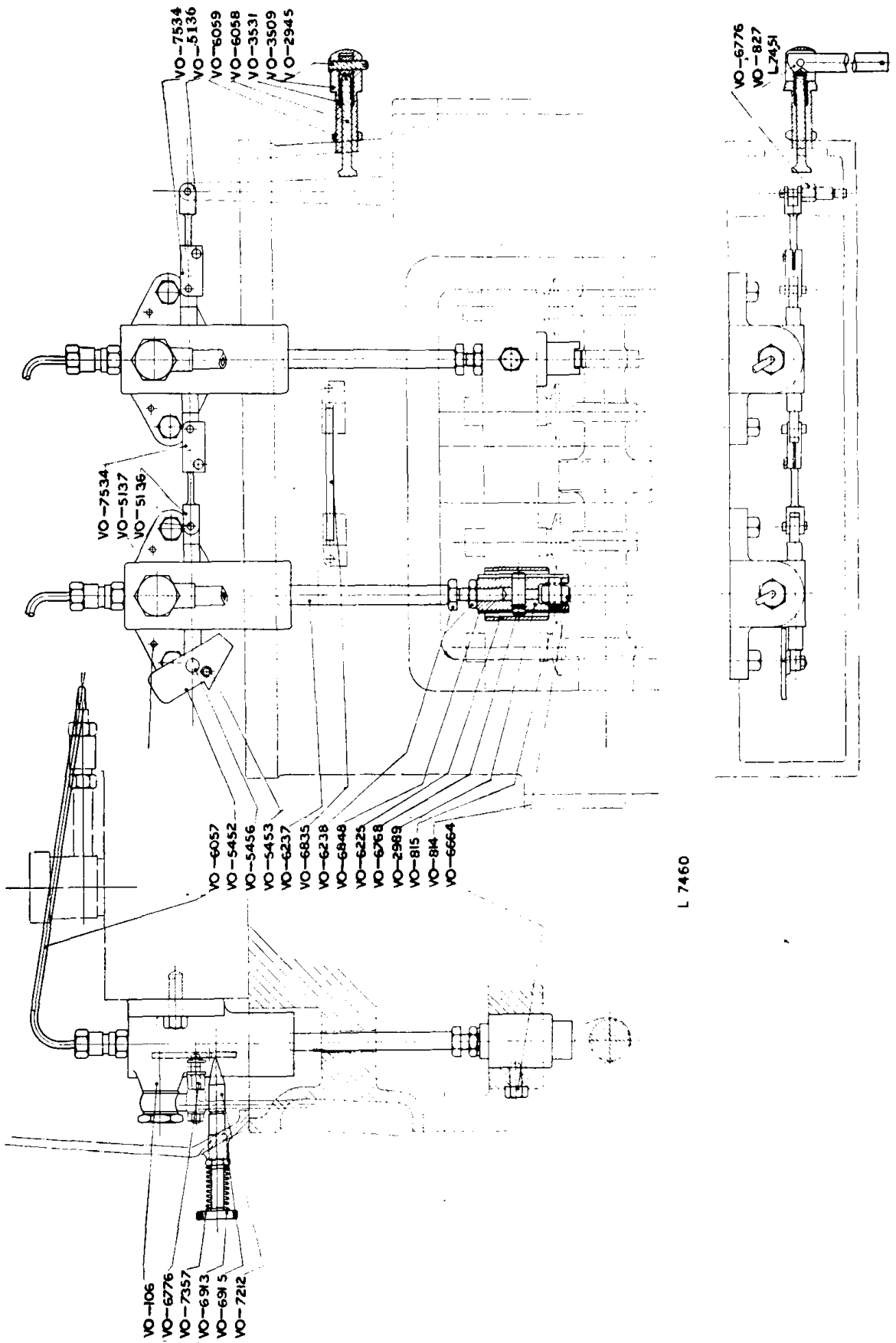


GOVERNOR AND SPEEDER GEAR—MARINE ENGINES.

PART NO.	CODE WORD	DESCRIPTION
VOM— 692	UZNEL	Speeder gear aft-end bracket
VOM— 695	UZNEM	Speeder gear control lever fulcrum pin
VOM— 713	UZNEP	Speeder gear control bar
VOM— 714	UZNES	Speeder gear aft-end control lever
VO — 715	UZNEW	Governor speeder spring pin
VOM— 719	UZNID	Governor speeder spring
VOM— 720	UZNIJ	Speeder gear control bar pawl (L.H.)
VO —3011	UZNIN	Speeder control lever fulcrum pin
VO —3370	UZNIR	Speeder gear forward end, control lever
VOM—4750	UZNIT	Damper bush
VOM—4860	UZNIV	Speeder control quadrant
VOM—4923	UZNIX	Pawl pin
VOM—6191	UZNIZ	Speeder gear cover
VOM— 8316	UZNOB	Control bar forked connection
VOM—8317	UZNOC	Swivel joint
VOM—8745	UZNOF	Speeder gear quadrant stop peg
VOM—8746	UZNOG	Speeder gear control lever fulcrum pin nut
VOM—8747	UZNOM	Speeder gear quadrant nut
VOM—8748	UZNOP	Speeder gear bracket bolt
VOM—8749	UZNOS	Speeder gear swivel joint nut

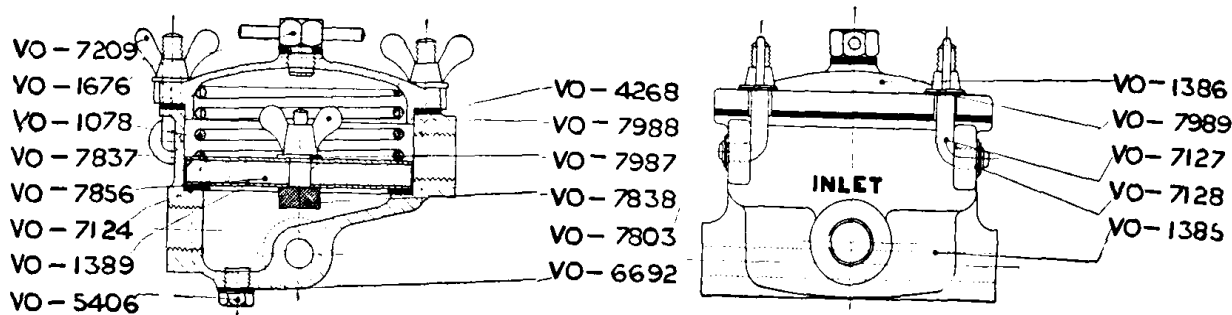
SPEEDER CONTROL GEAR AND FUEL PUMP CUT-OUT FOR
LOCO ENGINES.

PART NO.	CODE WORD	DESCRIPTION
VO — 710	UZNOY	Governor lever
VO — 715	UZNUC	Governor speeder spring pin
VOL— 719	UZNUF	Governor speeder spring
VOL— 827	UZNUG	Fuel pump cut-out lever
VO —2945	UZNUL	Fuel pump cut-out lever fulcrum pin
VO —3011	UZNUM	Speeder lever fulcrum pin
VOL 3370	UZNUP	Speeder lever
VO --3509	UZNUY	Fuel pump cut-out joint
VO —3531	UZNYE	Fuel pump cut-out push rod spring
VO —6058	UZNYK	Fuel pump cut-out push rod
VOL—6191	UZNYO	Speeder housing
VO —6193	UZNYR	Speeder sealing plunger
VO —6205	UZNYT	Speeder stop screw (not illustrated)
VO —6789	UZNYU	Speeder spring collar on governor lever
VO —7132	UZOAD	Speeder spring collar
VO —8751	UZOAH	Speeder housing shim (not illustrated)

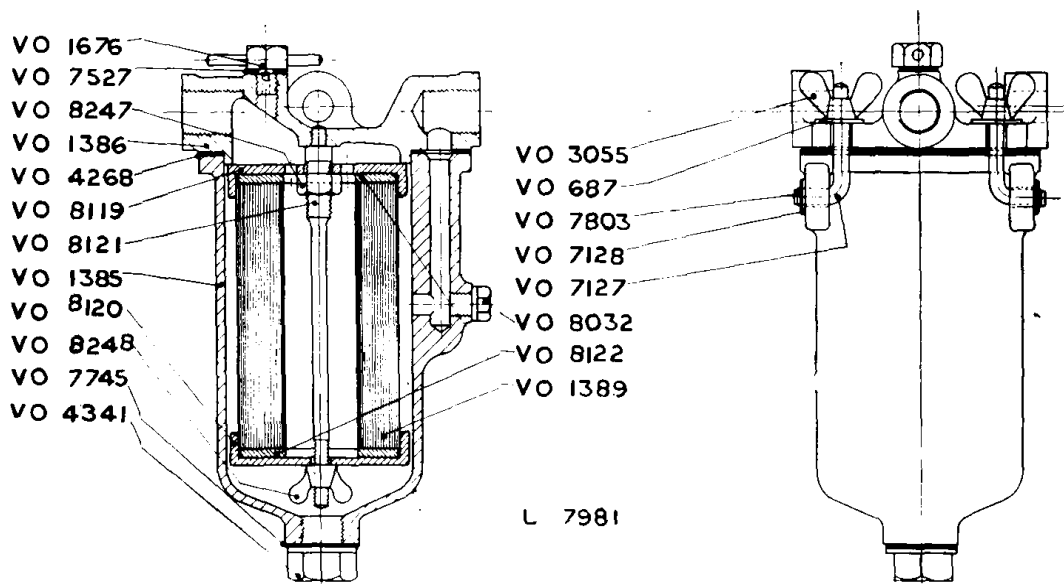


FUEL PUMP.

PART NO.	CODE WORD	DESCRIPTION	PART NO.	CODE WORD	DESCRIPTION
VO--106	UZOAJ	Fuel pump	VO--6848	UZOES	Fuel pump tappet sleeve
VO--814	UZOAN	Fuel pump cam roller	VO--6913	UZOEW	Fuel pump overload stop control knob
VO--815	UZOAR	Fuel pump cam roller pin	VO--6915	UZOFA	Fuel pump overload stop collar
VO--827	UZOAT	Fuel pump cut-out handle (or lever)	VO--7099	UZOFI	Fuel inlet connection in housing (not illustrated)
VO--2945	UZOAV	Fuel pump cut-out handle fulcrum pin	VO--7124	UZOFS	Spring for rack rod (not illustrated)
VO--2989	UZOAX	Fuel pump plunger tappet	VO--7212	UZOFY	Fuel pump overload stop plunger
VO--3509	UZOBE	Fuel pump cut-out joint	VO--7229	UZOGA	Fuel pump air vent plug (not illustrated)
VO--3531	UZOBO	Fuel pump cut-out push rod spring	VO--7268	UZOGI	Fuel pump cut out lock nut (not illustrated)
VO--5136	UZOBU	Fuel pump actuating link	VO--7357	UZOGY	Fuel pump overload stop spring
VO--5452	UZOCE	Fuel pump actuating link pin	VO--7334	UZOHE	Fuel pump actuating link fork end
VO--5452	UZOCH	Fuel pump overload stop pawl	VO--7546	UZOHO	Joint ring for air vent plug (not illustrated)
VO--5453	UZOCY	Fuel pump overload stop pawl check pin	VO--7725	UZOHR	Fuel pump cam roller bush (not illustrated)
VO--5456	UZOCU	Fuel pump overload stop pawl fulcrum	VO--7842	UZOHT	Fuel pump actuating link fork end spring (not illustrated)
VO--6057	UZODA	Fuel delivery pipe from pump	VO--7982	UZOHU	Oil deflector for fuel pump tappet (not illustrated)
VO--6058	UZODI	Fuel pump cut-out push rod	VO--7986	UZOID	Retaining plate for fuel inlet pipe (not illustrated)
VO--6059	UZODS	Fuel pump cut-out joint locknut	VO--9117	UZOIJ	Fuel delivery swivel union nut (not illustrated)
VO--6225	UZODY	Fuel pump tappet bush	VO--9118	UZOIK	Fuel delivery swivel union (not illustrated)
VO--6237	UZOEB	Fuel pump plunger tappet rod	VO--9119	UZOIN	Fuel delivery nut to pump (not illustrated)
VO--6238	UZOEC	Fuel pump tappet rod setscrew			
VO--6664	UZOEF	Fuel pump tappet bush setscrew			
VO--6768	UZOEG	Fuel pump plunger tappet pin			
VO--6776	UZOEM	Fuel pump actuating link pin (lever end)			
VO--6835	UZOEP	Fuel pump actuating link (4 cylinder engine)			



L 7630



L 7981

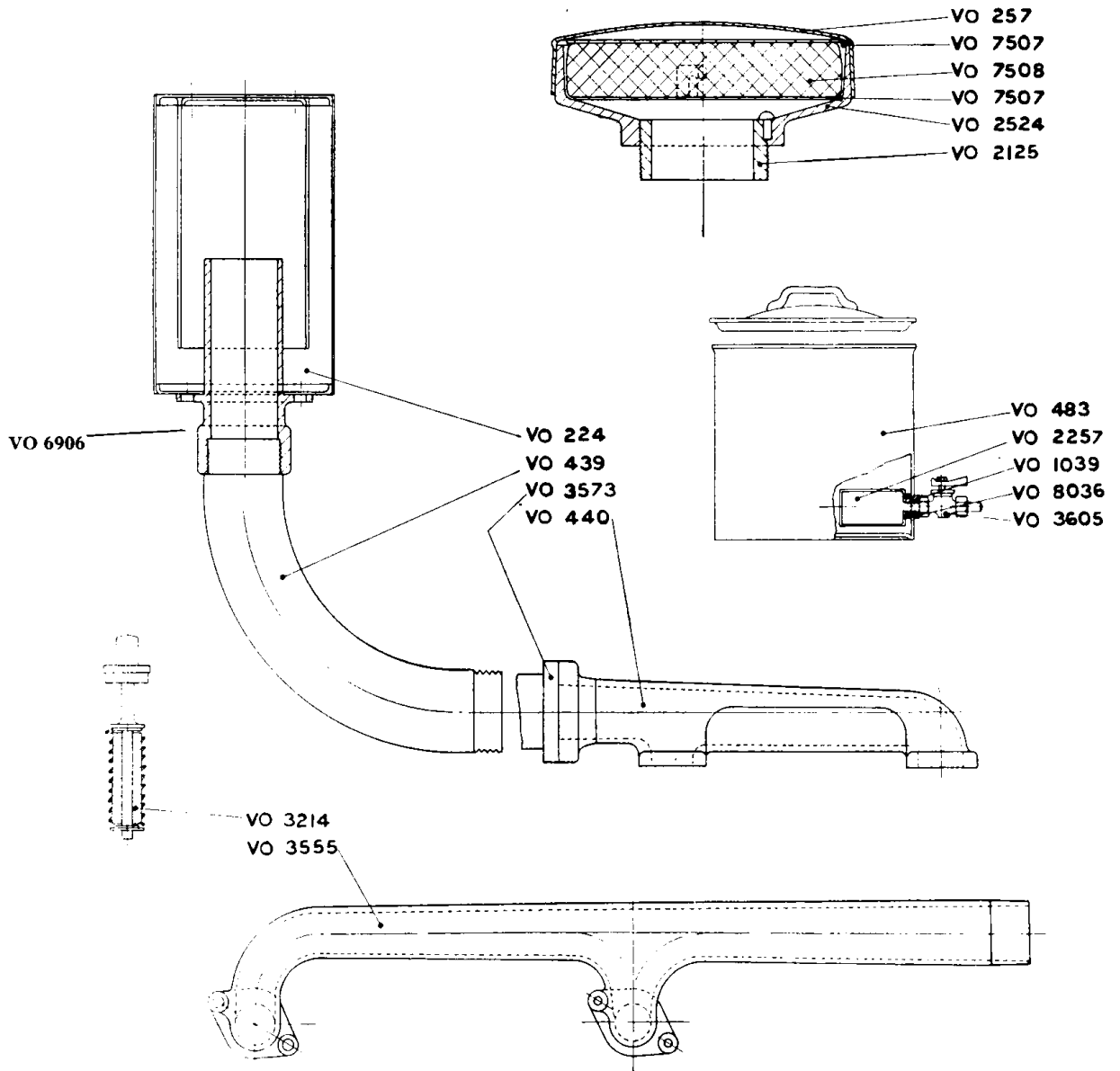
FUEL OIL FILTER (Single Cylinder Engines).

PART NO.	CODE WORD	DESCRIPTION
VO— 426	UZOIT	Fuel inlet pipe connection (not illustrated)
VO—1078	UZOIV	Fuel filter pad retaining spring
VO—1385	UZOIX	Fuel filter body
VO—1386	UZOIZ	Fuel filter body cover
VO—1389	UZOJA	Fuel filter strainer
VO—1676	UZOJI	Fuel filter air release plug
VO—4268	UZOJY	Fuel filter body joint
VO—5406	UZOKA	Fuel filter drain plug
VO—6692	UZOKI	Fuel filter drain plug joint
VO—7124	UZOKT	Fuel filter strainer joint ring
VO—7127	UZOLA	Fuel filter hook bolt
VO—7128	UZOLB	Fuel filter hook bolt washer
VO—7209	UZOLF	Fuel filter wing nut
VO—7803	UZOLG	Fuel filter hook bolt retaining ring
VO—7837	UZOLI	Fuel filter strainer perforated cover plate
VO—7838	UZOLM	Fuel filter strainer securing stud
VO—7856	UZOLP	Fuel filter strainer pad
VO—7987	UZOLS	Fuel filter strainer securing stud washer
VO—7988	UZOMA	Fuel filter strainer securing stud wing nut
VO—7989	UZOMI	Fuel filter hook bolt washer on cover

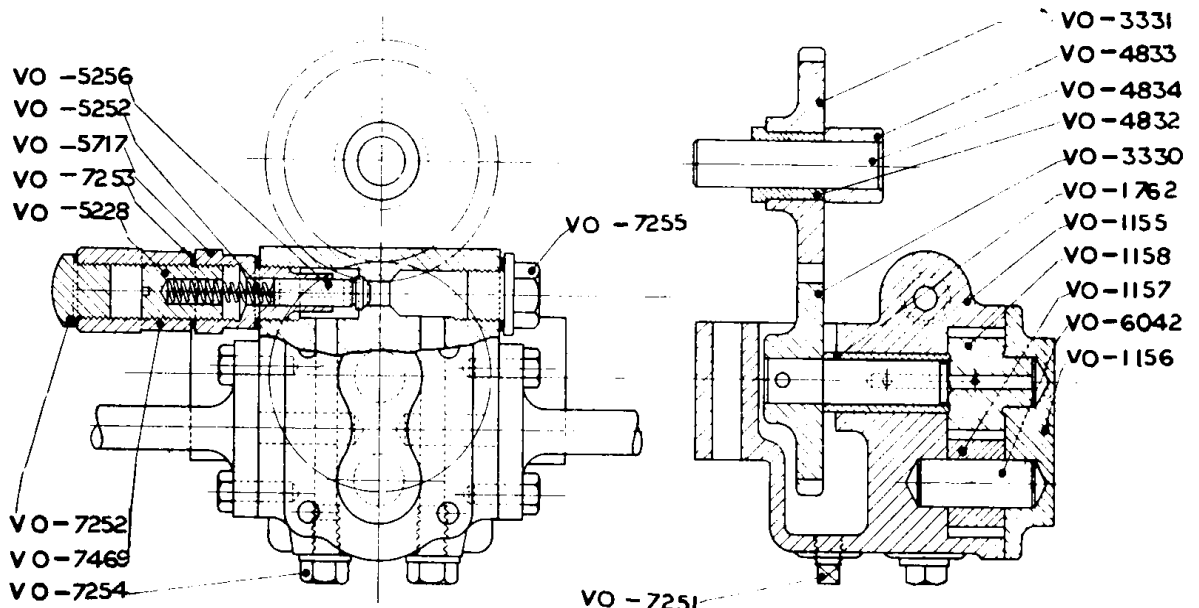
FUEL OIL FILTER (Multi-Cylinder Engines).

PART NO.	CODE WORD	DESCRIPTION
VO— 687	UZONE	Fuel filter wing nut washer
VO—1385	UZONO	Fuel filter body
VO—1386	UZONT	Fuel filter body cover
VO—1389	UZONU	Fuel filter element
VO—1676	UZOOB	Fuel filter air release plug
VO—3055	UZOOC	Fuel filter wing nuts
*VO—4265	UZOOF	Fuel filter inlet pipe connection
*VO—4266	UZOOG	Fuel filter inlet pipe nipple
*VO—4267	UZOO L	Fuel filter inlet pipe union nut
VO—4268	UZOOM	Fuel filter body joint
*VO—4282	UZOOS	Fuel filter outlet pipe nut
*VO—4323	UZOOW	Fuel filter outlet pipe nipple
VO—4341	UZO OY	Fuel filter drain plug
*VO—5399	UZOPE	Fuel filter outlet pipe connection
VO—7127	UZOPO	Fuel filter hook bolts
VO—7128	UZOPS	Fuel filter hook bolts washer
VO—7527	UZOPU	Fuel filter air release plug joint
VO—7745	UZORD	Fuel filter drain plug joint
VO—7803	UZORJ	Fuel filter hook bolt retaining ring
VO—8032	UZORK	Fuel filter plug with collar
VO—8119	UZORO	Fuel filter strainer element top cover plate
VO—8120	UZORT	Fuel filter strainer element bottom cover plate
VO—8121	UZORU	Fuel filter strainer element centre stud
VO—8122	UZORY	Fuel filter strainer element joint
VO—8247	UZOSI	Fuel filter centre stud nut
VO—8248	UZOSK	Fuel filter centre stud wing nut

* not illustrated.



L 7988



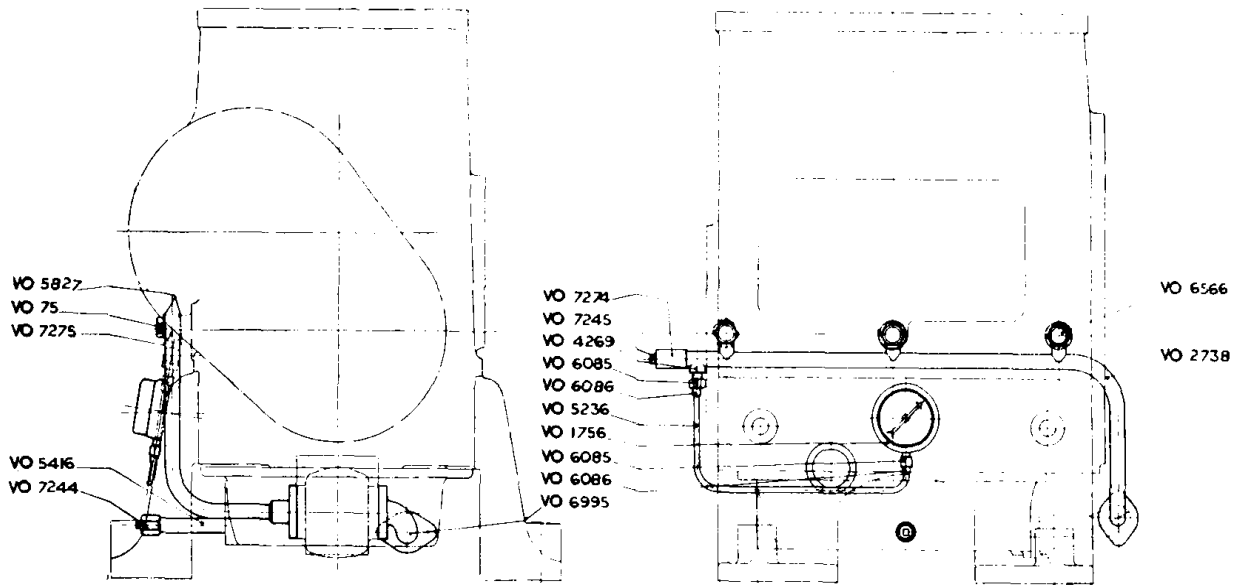
L 7682

EXHAUST AND WATER MANIFOLDS, CARTRIDGE STARTER, AIR AND EXHAUST SILENCERS AND FUEL TANK.

PART NO.	CODE WORD	DESCRIPTION
VO— 224	UZOSU	Exhaust silencer
VO— 257	UZOTE	Air silencer and lid
VO— 439	UZOTO	Exhaust silencer bend
VO— 440	UZOUB	Exhaust manifold
VO— 483	UZOUF	Fuel oil tank
VO—1039	UZOUG	Fuel oil strainer locknut
VO—2125	UZOUL	Air silencer and filter connection
VO—2257	UZOOM	Fuel oil tank gauge strainer
VO—2524	UZOUP	Air silencer and filter body
VO—3214	UZOUS	Starter plug
VO—3555	UZOUY	Water outlet manifold
VO—3573	UZOVO	Exhaust manifold flange
VO—3605	UZOVU	Fuel oil tank tap
VO—6906	UZOWE	Exhaust silencer connection
VO—7507	UZOWL	Air silencer and filter perforated plate
VO—7508	UZOWM	Air filter pad
VO—8036	UZOWO	Fuel tank drain cock seating

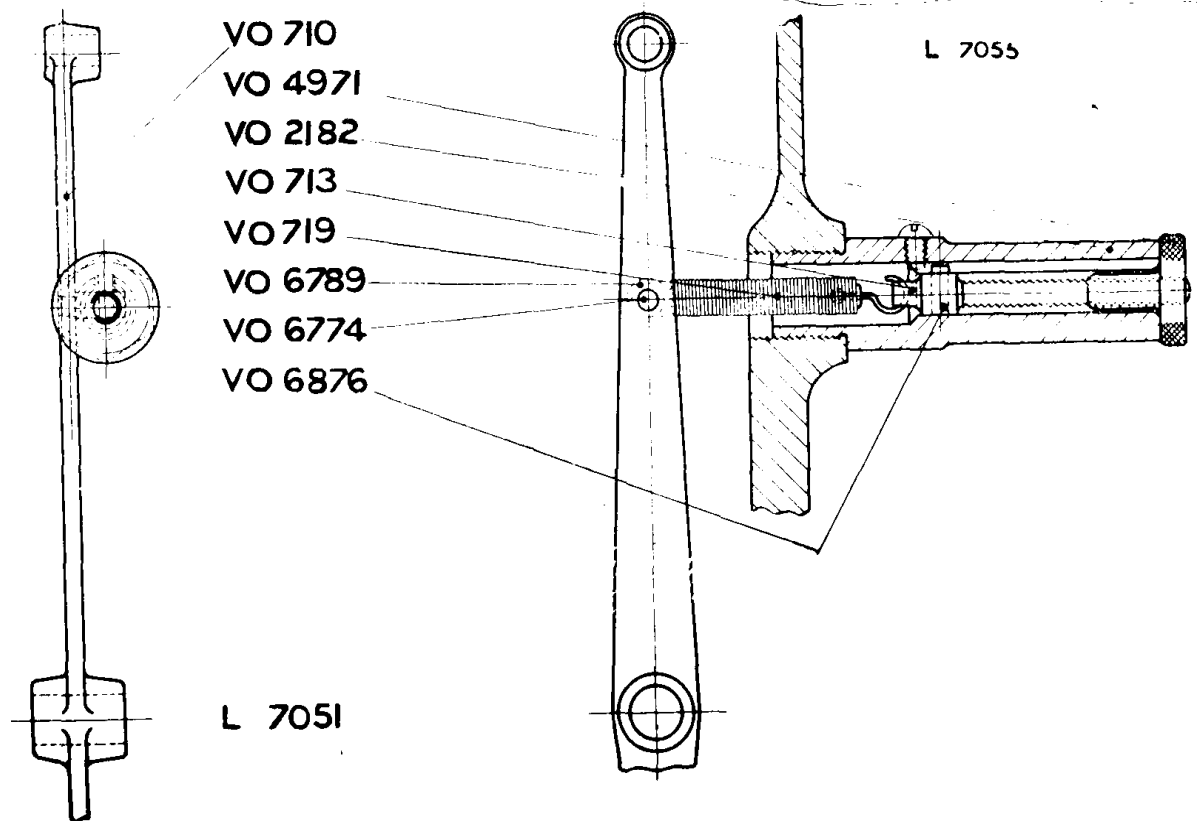
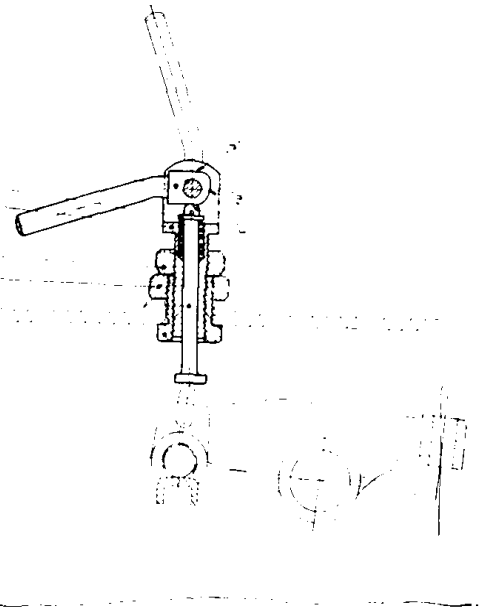
LUBRICATING OIL PUMP.

PART NO.	CODE WORD	DESCRIPTION
VO—1155	UZOWS	Lubricating oil pump body
VO—1156	UZOWY	Lubricating oil pump body cover
VO—1157	UZOXA	Lubricating oil pump gearwheel (driven)
VO—1158	UZOXI	Lubricating oil pump gearwheel (driver)
VO—1762	UZOXY	Lubricating oil pump body bush
VO—3330	UZOYA	Lubricating oil pump driver wheel
VO—3331	UZOYB	Lubricating oil pump drive idle wheel
VO—4832	UZOYI	Lubricating oil pump drive idle bush
VO—4833	UZOZE	Lubricating oil pump drive idle wheel pin bush
VO—4834	UZOZO	Lubricating oil pump drive idle wheel pin
VO—5228	UZOZU	Relief valve spring stop
VO—5252	UZPAC	Relief valve spring
VO—5256	UZPAF	Relief valve
VO—5717	UZPAG	Relief valve guide
VO—6042	UZPAL	Lubricating oil pump gearwheel pin
VO—7251	UZPAM	Lubricating oil pump body drain plug
VO—7252	UZPAP	Relief valve spring stop cap nut plug
VO—7253	UZPAW	Relief valve spring stop cap nut joint
VO—7254	UZPED	Lubricating oil pump body plug
VO—7255	UZPEH	Lubricating oil pump relief valve plug
VO—7469	UZPEJ	Lubricating oil pump relief valve spring stop cap nut



L. 7054

- VO 2945
- VO 3506
- VO 6881
- VO 3509
- VO 3531
- VO 6059
- VO 7295
- VO 6058
- VO 6820



LUBRICATING OIL PIPE-RAIL.

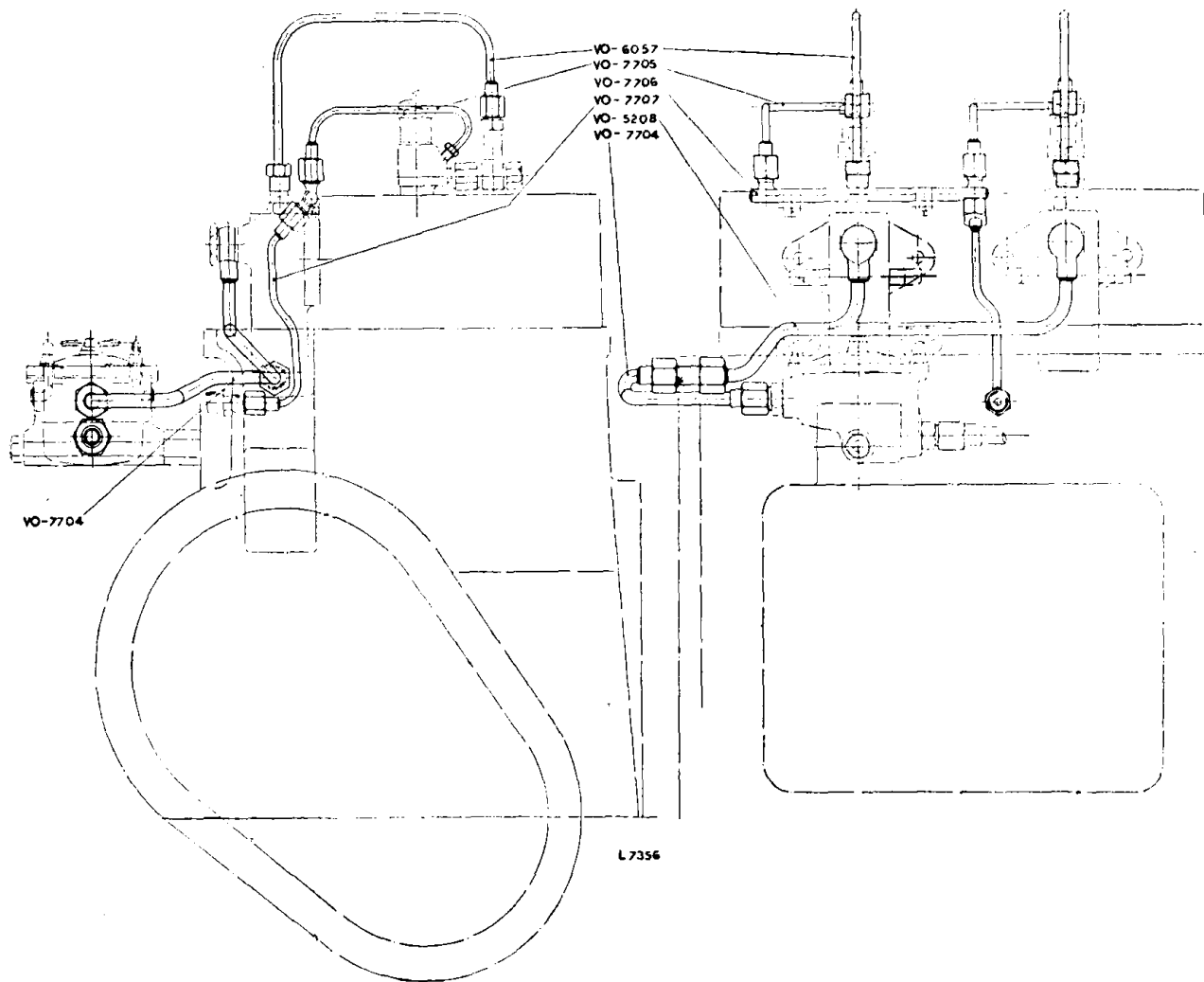
PART NO.	CODE WORD	DESCRIPTION
VO— 75	UZPEK	Main bearing lubricating oil connection and stop
VO—1756	UZPEN	Pressure gauge
VO—2738	UZPER	Pipe rail
VO—4251	UZPET	Lubricating oil pump mating flange (not illustrated)
VO—4269	UZPEV	Pressure gauge connection union body
VO—5236	UZPIC	Pressure gauge connection pipe
VO—5416	UZPIG	Drain pipe
VO—5827	UZPIL	Lubricating oil connection washers
VO—6085	UZPIM	Pressure gauge connection nut
VO—6086	UZPIP	Pressure gauge connection nipple
VO—6566	UZPIS	Main bearing lubricating oil connection (in housing)
VO—6995	UZPIY	Lubricating oil pipe from pump to sump
VO—7244	UZPOD	Drain pipe cap nut
VO—7245	UZPOH	Lubricating oil pipe rail cleaning plug
VO—7274	UZPOJ	Lubricating oil pipe rail cleaning plug socket
VO—7275	UZPOK	Lubricating oil branch connection

EXHAUST VALVE SPRAGGING GEAR.

PART NO.	CODE WORD	DESCRIPTION
VO—2945	UZPOR	Cam fulcrum pin for valve spragging gear
VO—3506	UZPOT	Cam for exhaust valve spragging gear
VO—3509	UZPOX	Joint for exhaust valve spragging gear
VO—3531	UZPOZ	Spring for valve spragging gear
VO—6058	UZPUD	Push rod for valve spragging gear
VO—6059	UZPUK	Locknut for adjusting sleeve
VO—6820	UZPUN	Adjusting sleeve for valve spragging gear
VO—6881	UZPUR	Spring retaining collar for valve spragging gear
VO—7295	UZPUT	Locknut for joint

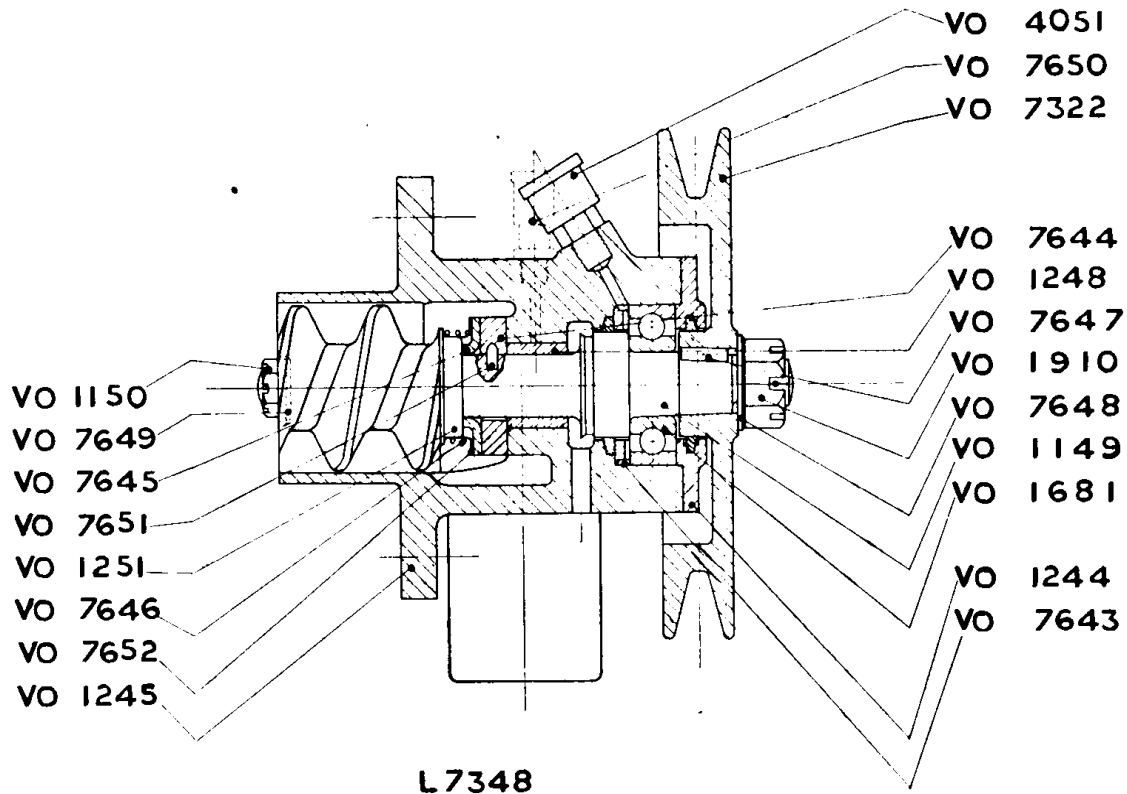
SPEEDER GEAR.

PART NO.	CODE WORD	DESCRIPTION
VO— 710	UZPUV	Governor lever
VO— 713	UZPUZ	Speeder control screw
VO— 719	UZPYA	Speeder spring
VO—2182	UZPYB	Speeder control distance piece
VO—4971	UZPYC	Speeder control adjusting nut
VO—6774	UZPYF	Speeder spring pin
VO—6789	UZPYG	Speeder spring collar
*VO—6876	UZPYI	Peg for speeder control screw * not fitted to latest engines.



FUEL PIPE.

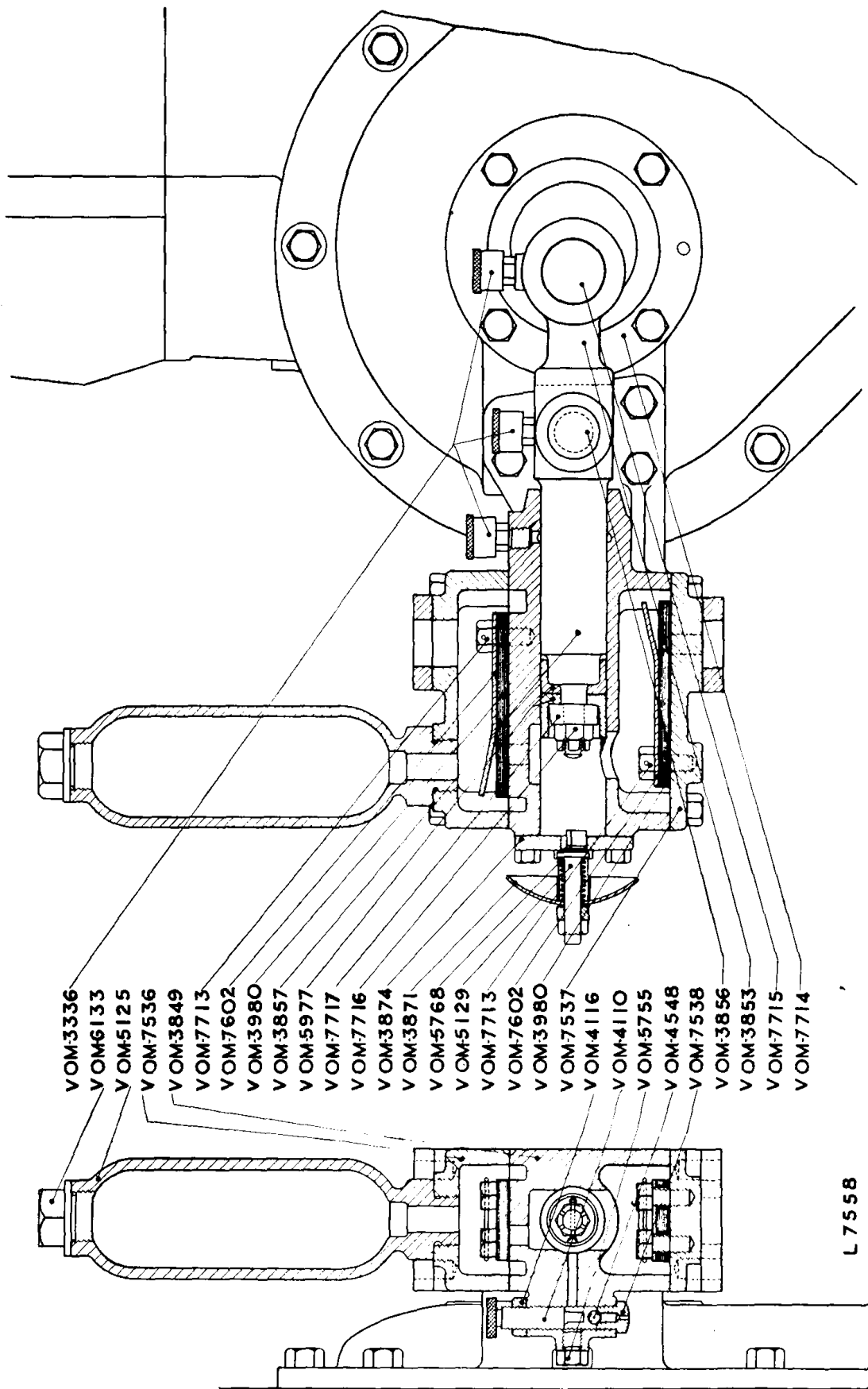
PART NO.	CODE WORD	DESCRIPTION
VO—5208	UZPYL	Fuel delivery pipe rail inside housing
*VO—6057	UZPYM	Fuel delivery pipe pump to injector
VO—7704	UZPYS	Fuel pipe from filter to pipe rail in housing
*VO—7705	UZRAK	Fuel overflow pipe from injector to overflow pipe rail
VO—7706	UZРАН	Fuel overflow pipe rail
VO—7707	UZRAR	Fuel overflow pipe from overflow rail to connection in housing
<p><i>*When ordering for stock state whether for Mark 37 or CAV atomisers.</i></p>		



WATER CIRCULATOR

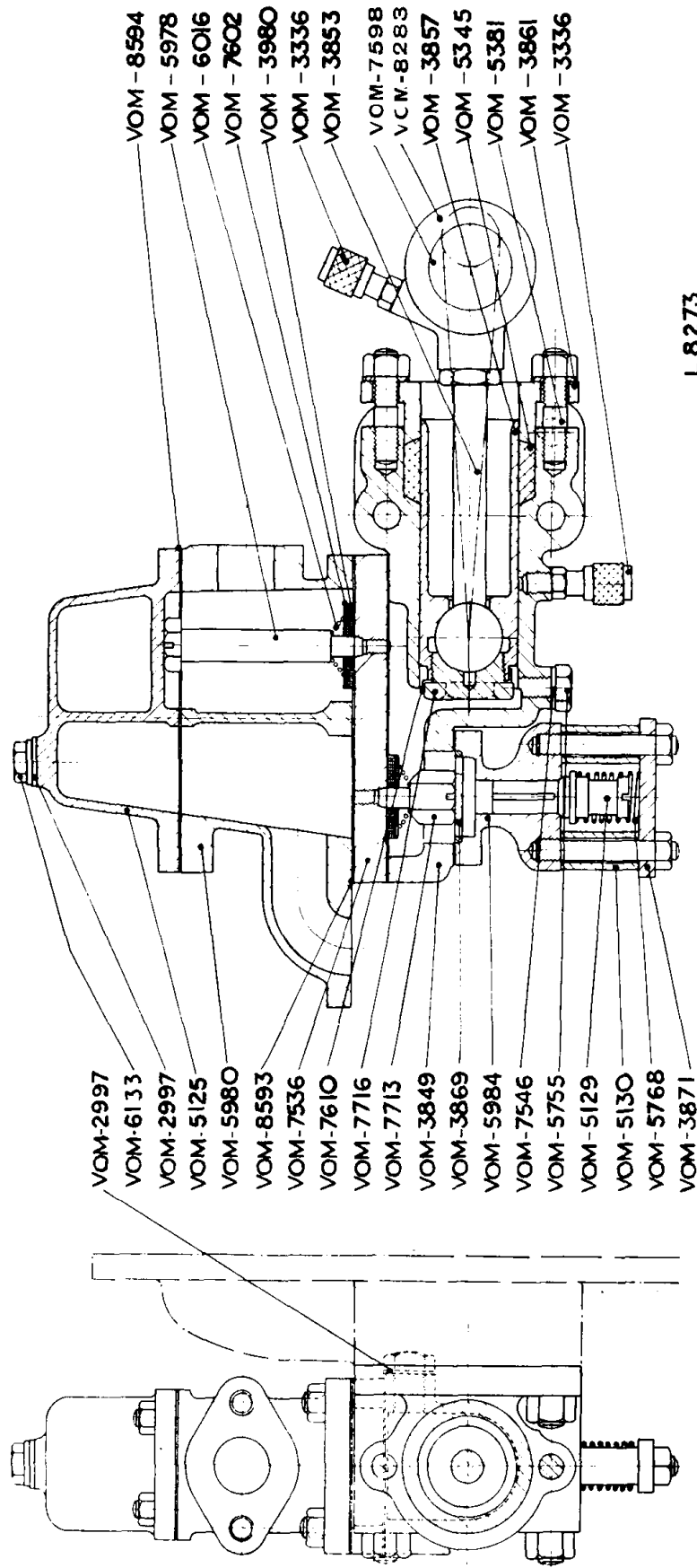
PART NO.	CODE WORD	DESCRIPTION
VO--1149	UZRAT	Water circulator spindle
VO--1150	UZRAV	Water circulator impeller nut
VO--1244	UVRAX	Water circulator housing cover
VO--1245	UZRAZ	Water circulator housing
VO--1248	UZREB	Water circulator oil retaining bush
VO--1251	UZREC	Water circulator impeller
VO--1681	UZREF	Water circulator ball bearing
VO--1910	UZREL	Water circulator spindle nut
VO--4051	UZREM	Water circulator pressure lubricator
VO--7322	UZREP	Water circulator pulley
VO--7643	UZRES	Water circulator ball bearing backing ring
VO--7644	UZREW	Water circulator sealing ring
VO--7645	UZRID	Water circulator impeller rubber washer
VO--7646	UZRIJ	Water circulator impeller spring
VO--7647	UZRIK	Water circulator spindle key
VO--7648	UZRIN	Water circulator spindle washer
VO--7649	UZRIR	Water circulator impeller washer
VO--7650	UZRIV	Water circulator oil cup
VO--7651	UZRIX	Water circulator impeller spindle dowel pin
*VO--7652	UZRIZ	Water circulator impeller rubber washer protector
VO--8320	UZROB	Water circulator plug in housing (not illustrated)

* not fitted to latest engines.



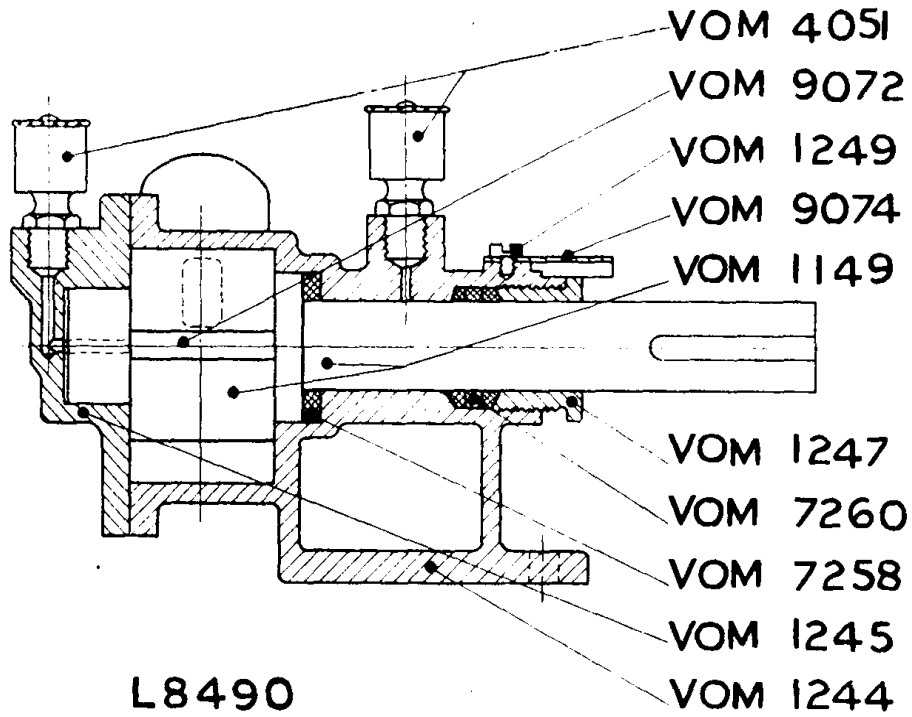
WATER CIRCULATING PUMP—MARINE ENGINES (Early Plunger Type).

PART MARK	CODE WORD	DESCRIPTION
VOM—3336	UZROC	Grease cups
VOM—3849	UZROF	Water pump cylinder
VOM—3853	UZROG	Water pump connecting rod
VOM—3856	UZROL	Water pump plunger pin
VOM—3857	UZROM	Water pump piston
VOM—3871	UZROP	Water pump valve guide
VOM—3874	UZROY	Water pump delivery cover
VOM—3980	UZRUC	Water pump suction valve
VOM—4110	UZRUF	Snifting valve body
VOM—4116	UZRUG	Snifting valve locknut
VOM—4548	UZRUL	Water circulating pump ball valve
VOM—5125	UZRUM	Delivery air vessel
VOM—5129	UZRUP	Relief valve in water pump
VOM—5755	UZRUS	Brass plug for water circulating pump
VOM—5768	UZRUU	Water circulating pump relief valve spring
VOM—5977	UZRYE	Spring cap for water circulating pump
VOM—6133	UZRYO	Delivery air vessel top plug
VOM—7536	UZRYR	Water circulating pump delivery valve cover
VOM—7537	UZRYT	Water circulating pump suction valve cover
VOM—7538	UZRYU	Water circulating pump snifting valve seat
VOM—7602	UZSAC	Valve plates
VOM—7713	UZSAF	Setscrew for retaining pump valve flaps
VOM—7714	UZSAG	Bearing for pump crank
VOM—7715	UZSAL	Pump crank
VOM—7716	UZSAM	Castle nut for retaining cup leathers
VOM—7717	UZSAP	Washer



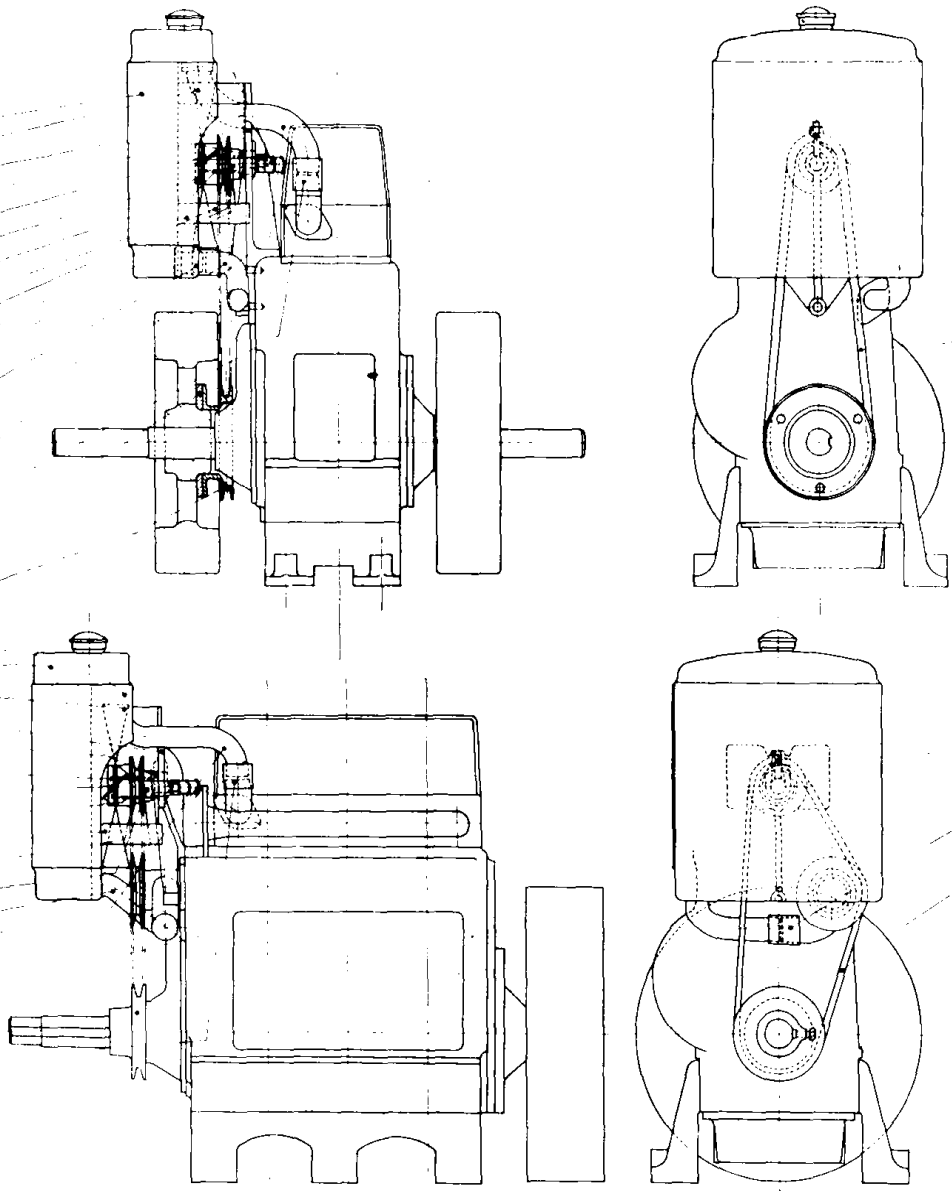
WATER CIRCULATING PUMP—MARINE ENGINES (Later Plunger Type)

PART NO.	CODE WORD	DESCRIPTION
VOM—2997	UZSAW	Water circulating pump air vessel and body plug joint
VOM—3336	UZSED	Water circulating pump grease cup
VOM—3849	UZSEH	Water circulating pump body
VOM—3853	UZSEJ	Water circulating pump connecting rod
VOM—3857	UZSEK	Water circulating pump plunger
VOM—3861	UZSEN	Water circulating pump gland
VOM—3869	UZSER	Water circulating pump relief valve plate
VOM—3871	UZSET	Water circulating pump relief valve stop
VOM—3980	UZSEV	Water circulating pump valve
VOM—5125	UZSIC	Water circulating pump air vessels
VOM—5129	UZSIG	Water circulating pump relief valve
VOM—5130	UZSIL	Water circulating pump relief valve distance piece
VOM—5345	UZSIM	Water circulating pump gland packing
VOM—5381	UZSIP	Water circulating pump gland stud
VOM—5755	UZSIS	Water circulating pump body drain plug
VOM—5768	UZSIY	Water circulating pump relief valve spring
VOM—5978	UZSOD	Water circulating pump relief valve pin
VOM—5980	UZSOH	Water circulating pump delivery valve casing
VOM—5984	UZSOJ	Water circulating pump suction and delivery casing
VOM—6016	UZSOK	Water circulating pump relief valve guide
VOM—6133	UZSOR	Water circulating pump valve spring
VOM—7586	UZSOT	Water circulating pump air vessel and body plug
VOM—7546	UZSOX	Water circulating pump valve plate
VOM—7598	UZSOZ	Water circulating pump drain plug
VOM—7602	UZSUD	Water circulating pump crank
VOM—7610	UZSUK	Water circulating pump valve spring plate
VOM—7713	UZSUN	Water circulating pump plunger cap nut washer
VOM—7716	UZSUR	Water circulating pump suction valve pin
VOM—8283	UZSUT	Water circulating pump plunger cap nut
VOM—8593	UZSUV	Water circulating pump connecting rod large end
VOM—8594	UZSUZ	Water circulating pump valve plate joint
		Water circulating pump air vessel joint



L8490

- VO-8385
- VO-8101
- VO-5911
- VO-2969
- VO-8139
- VO-8140
- VO-2974
- VO-2972
- VO-8209
- VO-8117
- VO-2975
- VO-2971
- VO-7315
- VO-7316
- VO-5196
- VO-1198
- VO-8383
- VO-8137
- VO-8138
- VO-2263
- VO-8209
- VO-8101
- VO-5911
- VO-2969
- VO-8139
- VO-8140
- VO-2974
- VO-2972
- VO-8117
- VO-2975
- VO-2971
- VO-5196
- VO-1198
- VO-7322
- VO-8385
- VO-2263
- VO-8137
- VO-8383



- VO-8141
- VO-8384
- VO-7614

- VO-8141
- VO-8384
- VO-7315
- VO-8383
- VO-7614

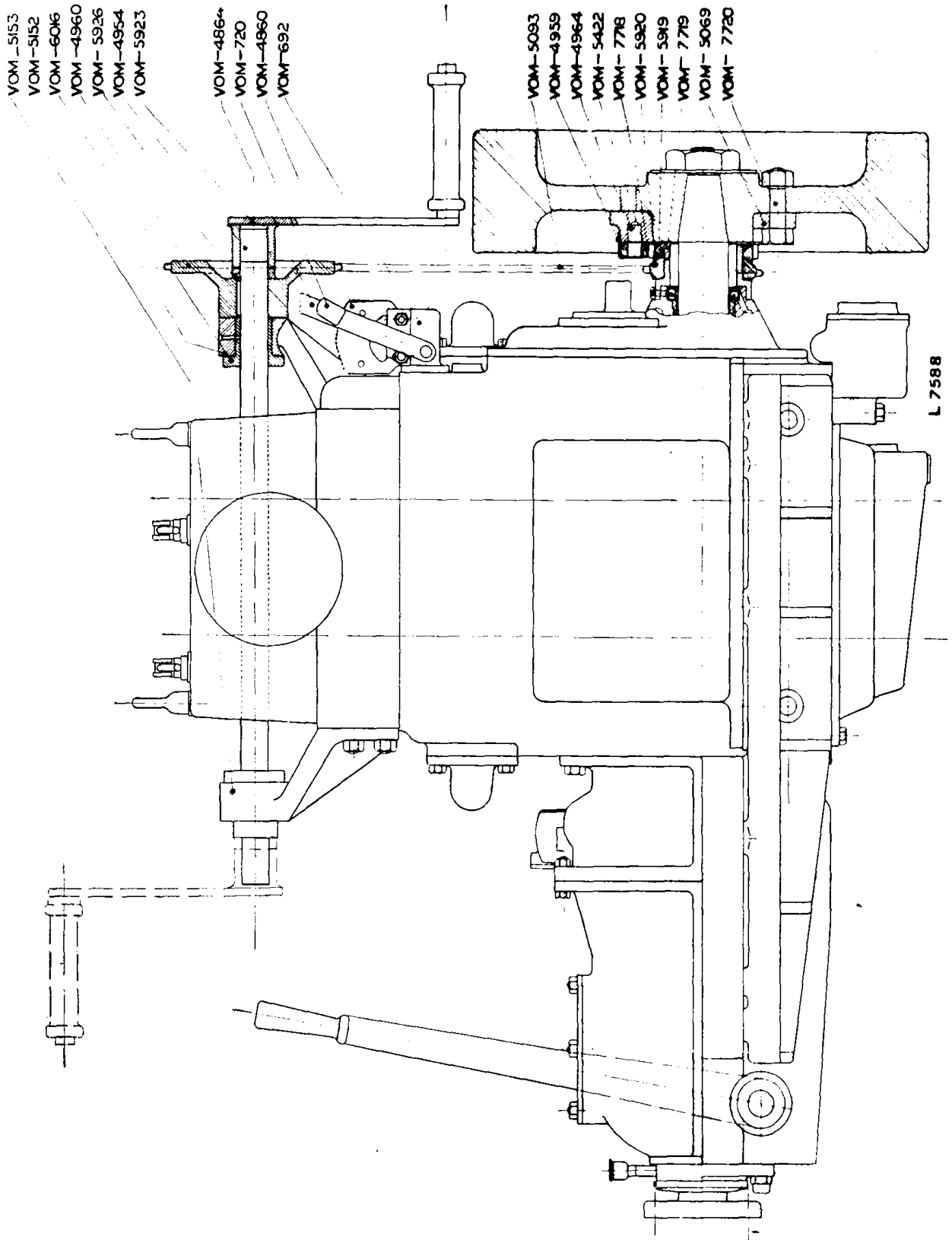
WATER CIRCULATING PUMP—MARINE ENGINES (Rotary Type)

PART NO.	CODE WORD	DESCRIPTION
VOM—1149	UZSYA	Water pump rotor and spindle
VOM—1244	UZSYB	Water pump body
VOM—1245	UZSYC	Water pump end cover
VOM—1247	UZSYF	Water pump gland
VOM—1249	UZSYG	Water pump gland locking plate screw
VOM—4051	UZSYI	Water pump spindle lubricator
VOM—7258	UZSYL	Water pump sealing ring
VOM—7260	UZSYM	Water pump gland packing rings
VOM—9072	UZSYS	Water pump rotor vane
VOM—9073	UZTAJ	Water pump rotor vane spring (not illustrated)
VOM—9074	UZTAK	Water pump gland locking plate

**COOLING WATER RADIATOR AND EQUIPMENT
FOR VYO, VTO and VSO ENGINES**

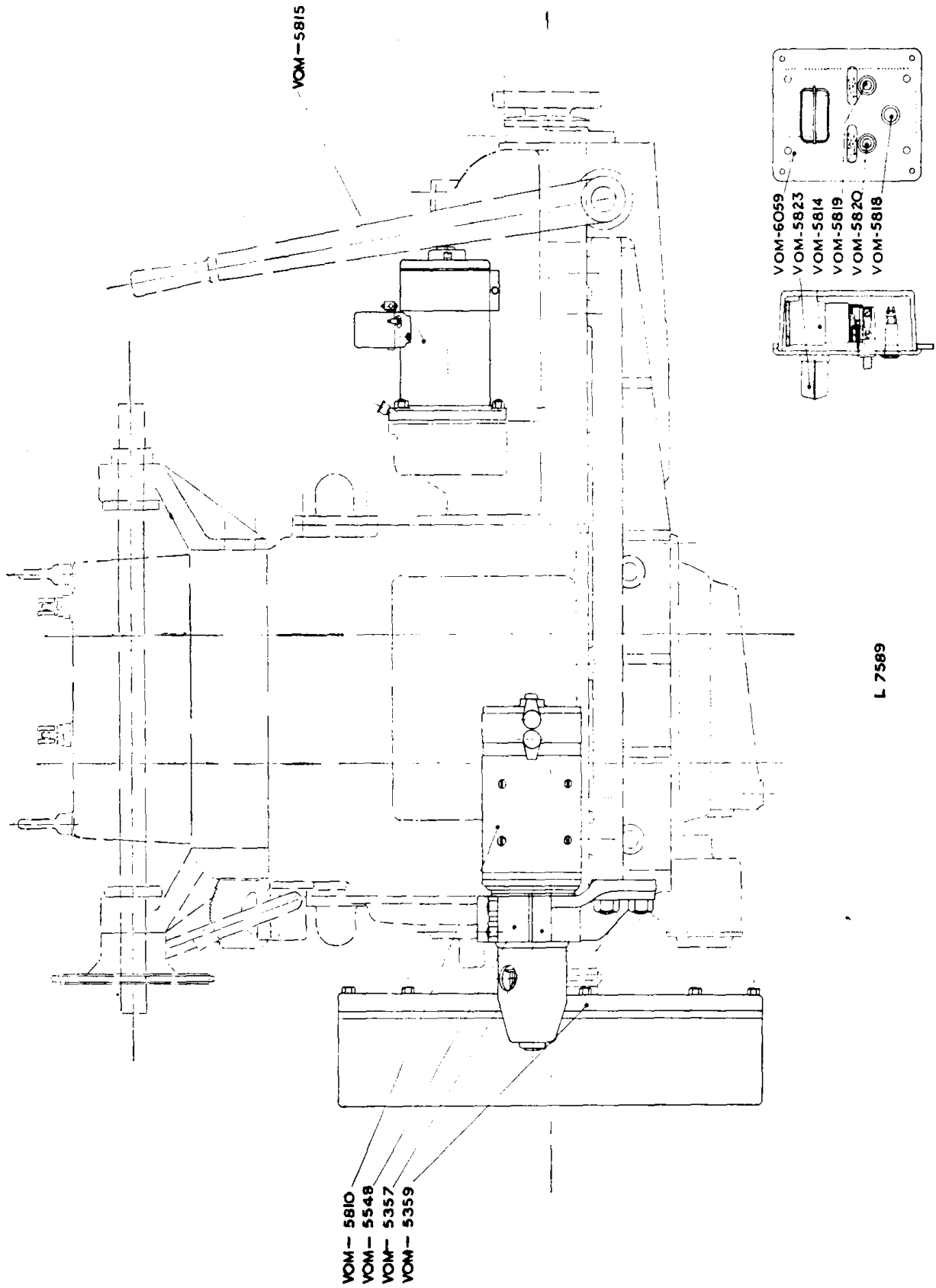
PART NO.	CODE WORD	DESCRIPTION
VO—1198	UZTAN	Cooling water radiator water outlet elbow
VO—2263	UZTAR	Cooling water radiator fan driving pulley
VO—2969	UZTAT	Cooling water radiator fan bracket
VO—2971	UZTAV	Cooling water radiator fan spindle
VO—2972	UZTAX	Cooling water radiator fan hub bush
VO—2974	UZTAZ	Cooling water radiator fan hub cap
VO—2975	UZTEB	Cooling water radiator fan hub and driving pulley
*VO—3555	UZTEC	Cooling water radiator water outlet manifold
VO—5196	UZTEL	Cooling water radiator inlet elbow
VO—5911	UZTEM	Cooling water radiator fan blade
VO—7315	UZTEP	Cooling water radiator outlet pipe
VO—7316	UZTES	Cooling water radiator connecting hose clip
VO—7322	UZTEW	Water circulator pulley
VO—7614	UZTID	Cooling water radiator fan driving belt
VO—8101	UZTIJ	Cooling water radiator
VO—8117	UZTIK	Cooling water radiator support
VO—8137	UZTIN	Cooling water radiator connecting hose outlet bore
VO—8138	UZTIR	Cooling water radiator fan driving pulley distance plate
VO—8139	UZTIV	Cooling water radiator fan spindle distance collar
VO—8140	UZTIX	Cooling water radiator fan spindle collar nut
VO—8141	UZTIZ	Cooling water radiator fan spindle adjusting stud
VO—8209	UZTOB	Cooling water radiator casing
VO—8383	UZTOC	Cooling water radiator connecting hose clip
VO—8384	UZTOF	Cooling water radiator fan spindle adjusting stud nut
VO—8385	UZTOG	Cooling water radiator fan spindle greaser

*4 cylinder engine only (not illustrated)



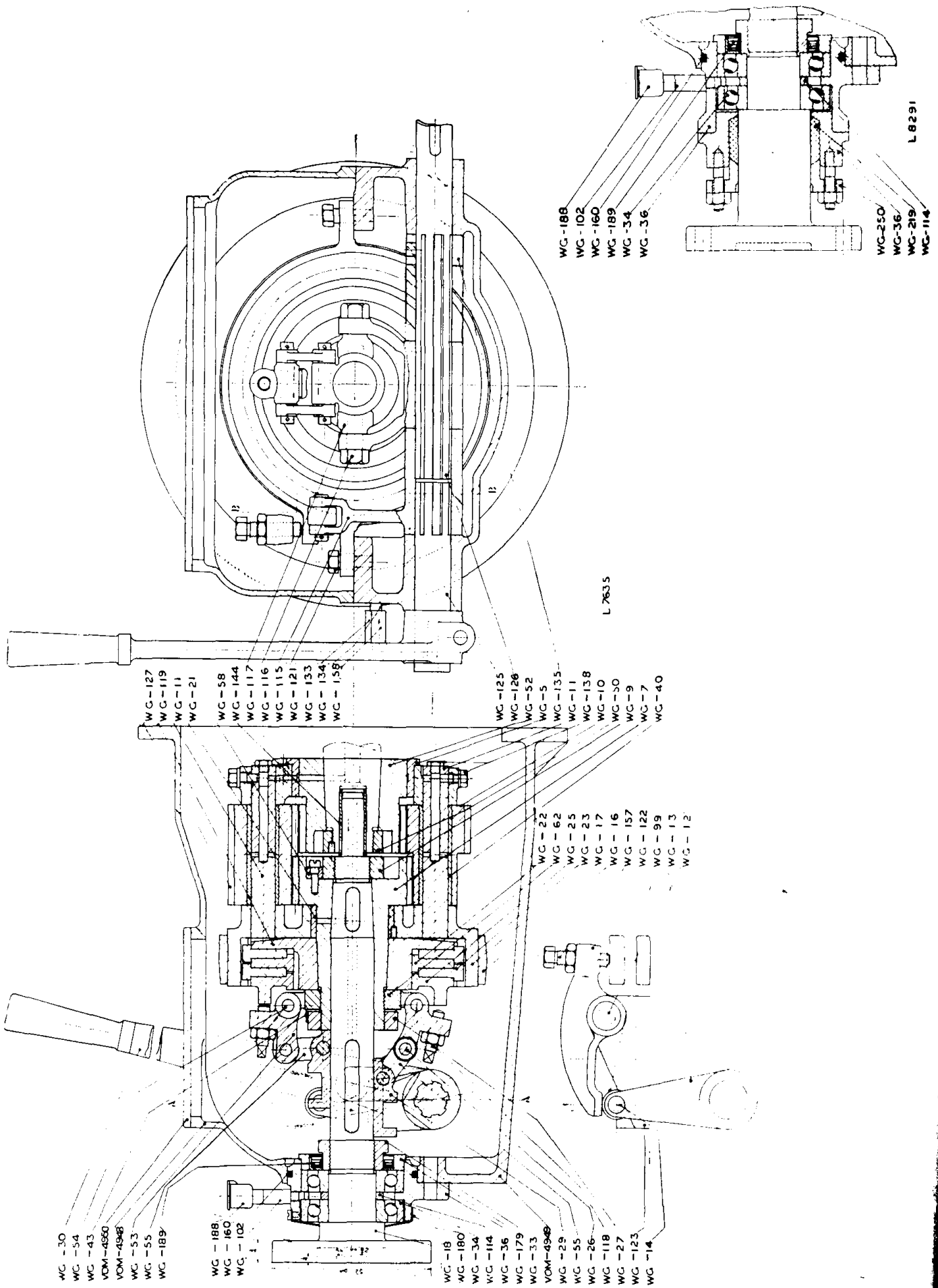
HAND STARTING AND SPEEDER GEAR—MARINE ENGINES

PART NO.	CODE WORD	DESCRIPTION
VOM—692	UZZTOL	Speeder gear support
VOM—720	UZZTOM	Speeder gear pawl
VOM—4860	UZZTOP	Speeder gear quadrant
VOM—4864	UZZTOY	Speeder control lever
VOM—4954	UZZTUC	Starting handle shaft
VOM—4959	UZZTUF	Starting handle ratchet gear cover
VOM—4960	UZZTUG	Starting shaft sprocket
VOM—4964	UZZTUL	Pawl fulcrum pin
VOM—5069	UZZTUM	Pawl carrier
VOM—5093	UZZTUP	Hand starting gear chain
VOM—5152	UZZTUS	Starting handle bracket (flywheel end)
VOM—5153	UZZTUY	Starting handle bracket (reverse gear end)
VOM—5422	UZZTYE	Pawl
VOM—5919	UZZTYO	Ratchet wheel
VOM—5920	UZZTYR	Ratchet sprocket
VOM—5923	UZZTYT	Starting handle
VOM—5926	UZZTYU	Starting handle boss pin
VOM—6016	UZZUAD	Bush for starting handle shaft
VOM—7718	UZZUAH	Crankshaft end cover adaptor retaining screw
VOM—7719	UZZUAJ	Crankshaft end cover adaptor
VOM—7720	UZZUAK	Pawl carrier retaining bolt and nut
VOM—7979	UZZUAN	Eccentric bush locking screw (not illustrated)



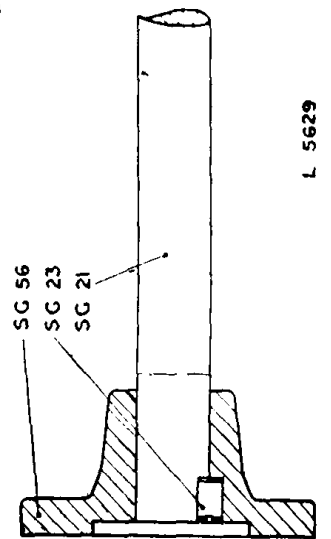
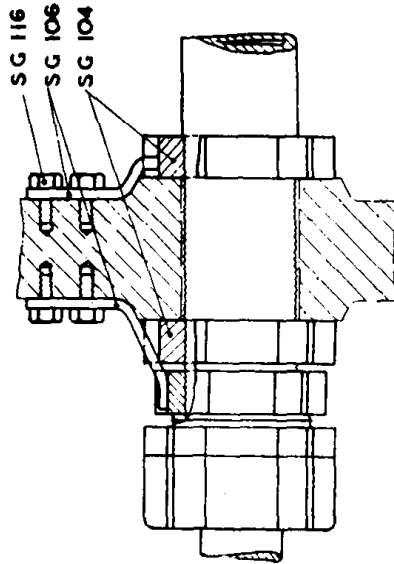
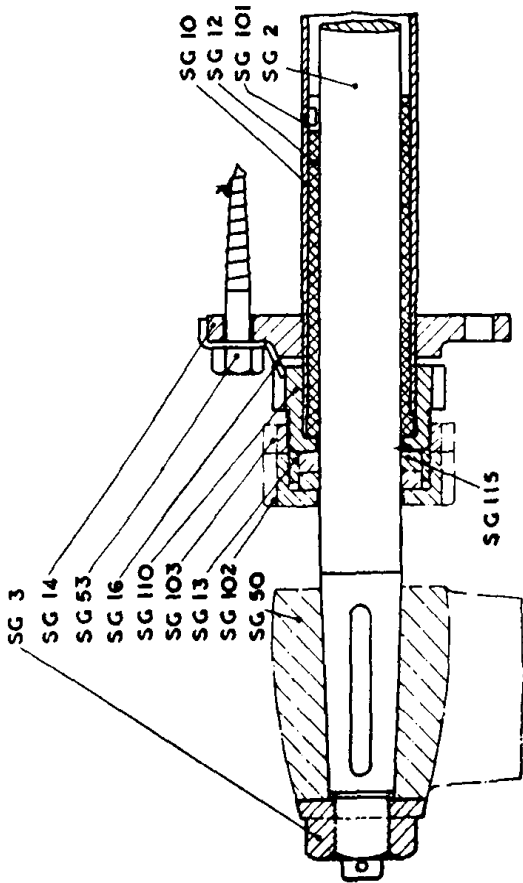
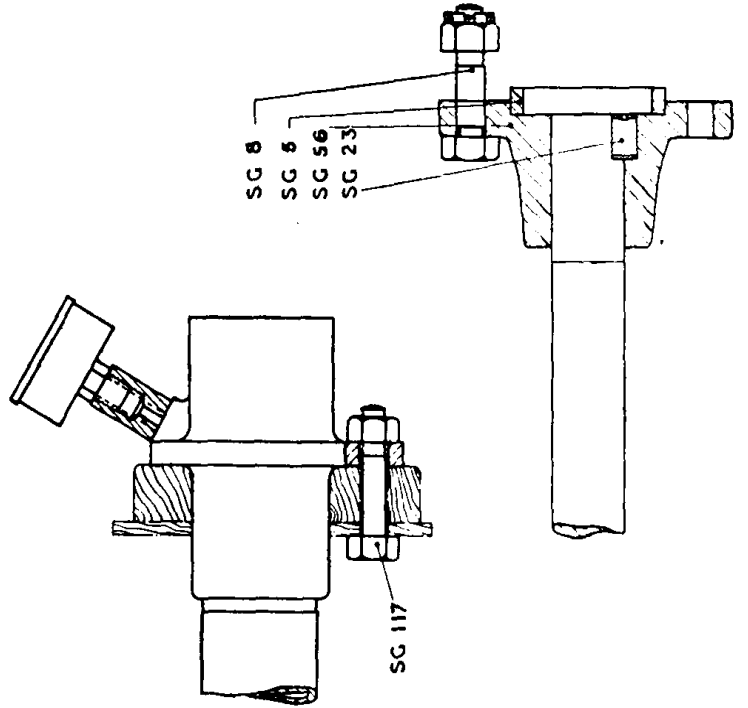
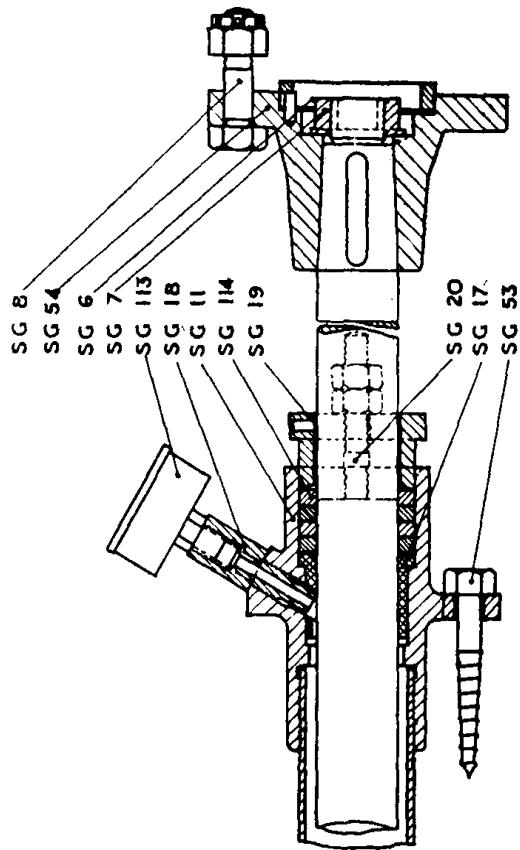
ELECTRIC STARTER—MARINE ENGINES

PART NO.	CODE WORD	DESCRIPTION
VOM—4646	UZUAR	Starter driving chain (not illustrated)
VOM—5357	UZUAV	Starter clamp
VOM—5359	UZUAX	Starter gear ring
VOM—5548	UZUBE	Bracket for starter motor
VOM—5810	UZUBO	Starter motor
VOM—5814	UZUBU	Solenoid
VOM—5815	UZUCE	Starter dynamo
VOM—5816	UZUCH	Cable welding flex (not illustrated)
VOM—5817	UZUCO	Cable (not illustrated)
VOM—5818	UZUCT	Warning light
VOM—5819	UZUCU	Warning light switch
VOM—5820	UZUDI	Solenoid switch
VOM—5821	UZUDS	Accumulator (not illustrated)
VOM—5823	UZUDY	Fuse box
VOM—6059	UZUEB	Switch board



REVERSING GEAR—MARINE ENGINES

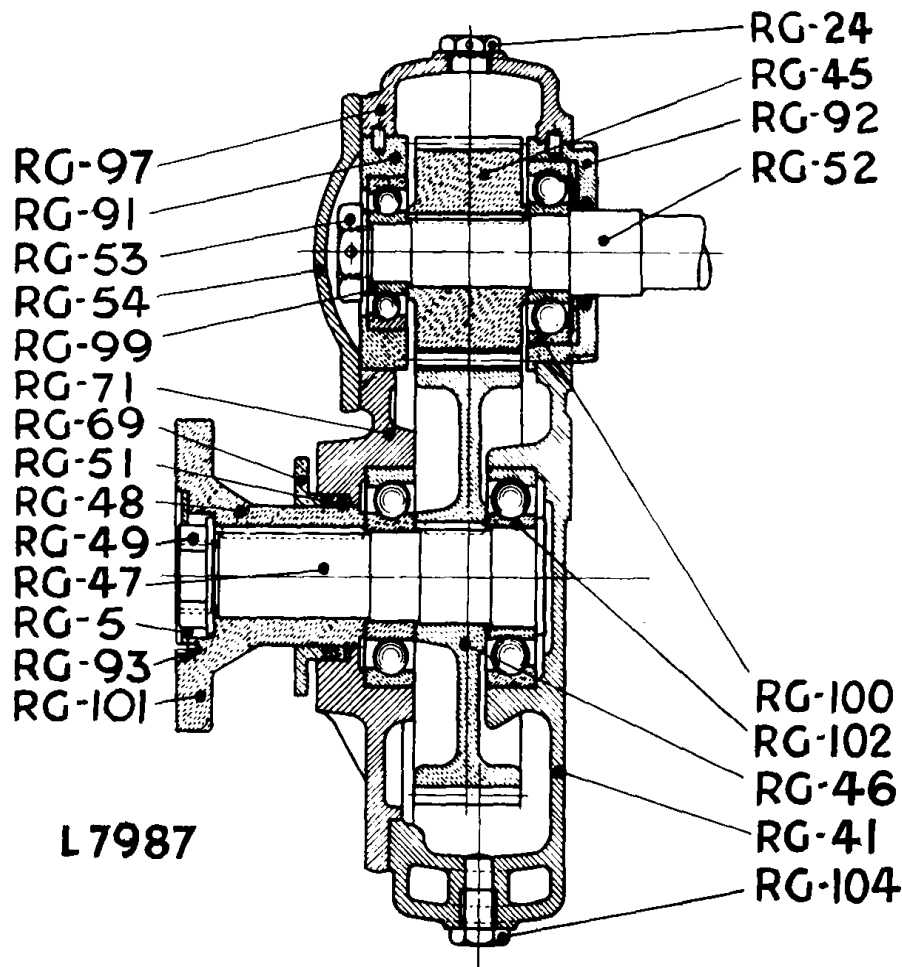
PART NO.	CODE WORD	DESCRIPTION	PART NO.	CODE WORD	DESCRIPTION
WG—5	UZUEC	Reversing gear clutch body large bush	WG—99	UZUKI	Reversing gear brake band lever roller
WG—7	UZUEF	Reversing gear spur gear on reverse shaft	WG—102	UZUKT	Reversing gear lubricating oil cup connection
WG—9	UZUEG	Reversing gear clutch shaft nut	WG—114	UZUKY	Reversing gear reverse shaft bearing packing
WG—10	UZUEL	Reversing gear spur pinion	WG—115	UZULA	Reversing gear sliding sleeve fork lever
WG—11	UZUEM	Reversing gear pinion shaft	WG—116	UZULB	Reversing gear sliding sleeve die screw
WG—12	UZUEP	Reversing gear brake band lever fulcrum pin	WG—117	UZULG	Reversing gear sliding sleeve die
WG—13	UZUEW	Reversing gear brake band roller lever	UZULI	Reversing gear toggle lever screw	
WG—14	UZUFA	Reversing gear brake band roller lever pin	UZULM	Reversing gear clutch spider	
WG—16	UZUFI	Reversing gear brake band	UZULP	Reversing gear brake band position screw	
WG—17	UZUFS	Reversing gear clutch body	UZULS	Reversing gear brake band lever	
WG—18	UZUFY	Reversing gear shaft	UZUMA	Reversing gear brake band bracket	
WG—21	UZUGA	Reversing gear clutch body small bush	UZUMI	Reversing lever shaft (short)	
WG—22	UZUGI	Reversing gear gripping plate (small)	UZUMY	Reversing gear spur pinion	
WG—23	UZUGS	Reversing gear gripping plate (large)	UZUNE	Reversing gear spur pinion	
WG—25	UZUGY	Reversing gear gripping plate with lugs	UZUNU	Reversing lever locking plunger body	
WG—26	UZUHE	Reversing gear toggle lever pin	UZUOB	Reversing lever locking plunger	
WG—27	UZUHR	Reversing gear toggle lever plate nut	UZUOC	Reversing gear sliding sleeve shaft collar	
WG—29	UZUHT	Reversing gear sliding sleeve	UZUOF	Reversing gear spur pinion shaft oil hole plugs	
WG—30	UZUHU	Reversing lever	UZUOG	Reversing gear crankshaft bush	
WG—33	UZUID	Reversing gear shaft nut	UZUOL	Reversing gear brake band adjusting screw	
WG—34	UZUIJ	Reversing gear journal thrust bearing	UZUOM	Reversing lever locking plunger spring	
WG—36	UZUIK	Reversing gear thrust bearing bracket		Reversing gear thrust bearing bracket joint ring	
WG—40	UZUIN	Reversing gear spur pinion bush	UZUOP	Reversing gear Gits seal housing ring	
WG—43	UZUIR	Reversing gear toggle lever plate locking washer	UZUOS	Reversing gear oil retaining cover for ball race	
WG—50	UZUIT	Reversing gear spur gear lock nut on engine crankshaft	UZUOW	Reversing gear oil cup	
WG—52	UZUIV	Reversing gear spur gear on engine shaft	UZUPE	Reversing gear Gits oil seal ring	
WG—53	UZUIZ	Reversing gear toggle lever	UZUPO	Reversing gear shaft gland packing	
WG—54	UZUJA	Reversing gear sliding sleeve link pin	UZUPS	Reversing gear shaft gland	
WG—55	UZUJI	Reversing gear sliding sleeve link	UZUPU	Reversing gear cover	
WG—58	UZUJY	Reversing gear spur gear nut locking die	UZURD	Reversing gear baseplate	
WG—62	UZUKA	Reversing gear toggle lever plate	UZURJ	Reversing gear top cover	



L 5629

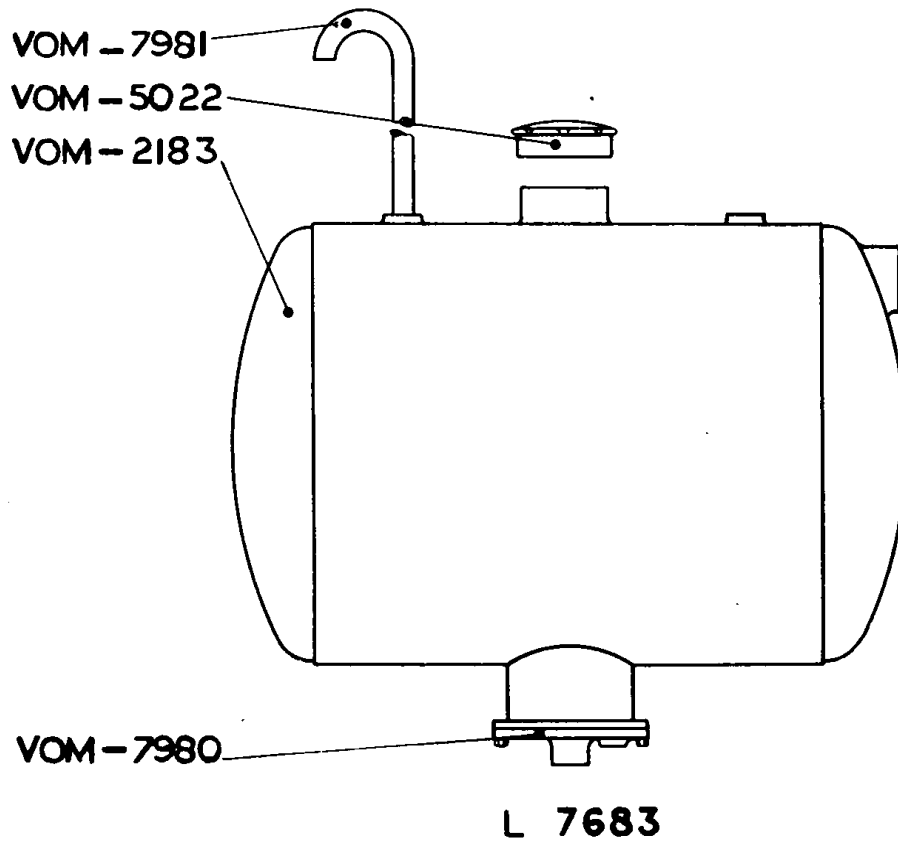
ARRANGEMENT OF STERN GEAR (Standard)

PART NO.	CODE WORD	DESCRIPTION	PART NO.	CODE WORD	DESCRIPTION
SG— 2	UZURK	Stern gear tail shaft	SG— 54	UZUWK	Tailshaft coupling (see SG—55 when reduction gear is used)
SG— 3	UZURN	Propeller nut	SG— 55	UZUWL	Tailshaft coupling when reduction gear is used (not illustrated)
SG— 5	UZURO	Stern gear intermediate shaft coupling spigot ring	SG— 56	UZUWM	Stern gear intermediate shaft coupling (see SG—57 when reduction gear is used)
SG— 6	UZURT	Stern gear tailshaft coupling ring (see SG—105 if reduction gear is used)	SG— 57	UZUWS	Stern gear intermediate shaft coupling when reduction gear is used (not illustrated)
SG— 7	UZURY	Stern gear coupling nut			
SG— 8	UZUSI	Stern gear intermediate shaft coupling bolt (see SG—47 if reduction gear is used)	SG—101	UZUWY	Stern tube bush locking screw
			SG—102	UZUXA	Stern tube gland nut (aft) (special)
SG— 10	UZUSK	Stern tube distance piece	SG—103	UZUXI	Stern tube gland nut locking nut (special)
SG— 11	UZUSU	Stern tube casting (forward end)	SG—104	UZUXY	Stern gear aft end locking nut for steel vessels
SG— 12	UZUTE	Stern tube bush	SG—105	UZUYA	Stern gear tail shaft coupling ring when reduction gear is used (not illustrated)
SG— 13	UZUTO	Stern tube nut	SG—106	UZUYB	Stern gear aft end locking plate for steel vessels
SG— 14	UZUUB	Stern post plate for wooden vessels	SG—110	UZUYF	Stern tube nut
SG— 16	UZUUC	Stern tube nut locking plate	SG—113	UZUYI	Stern tube forward casting grease cup
SG— 17	UZUUF	Stern tube gland neck ring (forward end)	SG—114	UZUYE	Stern tube forward casting grease packing
SG— 18	UZUUG	Stern tube grease cup adaptor locknut	SG—115	UZUYU	Stern tube gland nut grease packing
SG— 19	UZUUM	Stern tube gland (forward end)	SG—116	UZVAH	Stern gear aft end locking plate setscrew
SG— 20	UZUUP	Stern tube gland stud	SG—117	UZVAJ	Stern gear forward casting bolt for steel vessels
SG— 21	UZUUS	Stern gear intermediate shaft			
SG— 23	UZUUY	Stern gear intermediate shaft coupling grub screw			
SG— 47	UZUVO	Stern gear intermediate shaft coupling when reduction gear is used (not illustrated)			
SG— 50	UZUVU	Propeller			
SG— 53	UZUWE	Coach screws for wooden vessels			



REDUCTION GEAR

PART NO.	CODE WORD	DESCRIPTION
RG— 5	UZVAK	Reduction gear coupling nut spigot ring
RG— 24	UZVAN	Reduction gear breather plug
RG— 41	UZVAR	Reduction gear case
RG— 45	UZVAT	Reduction gear pinion
RG— 46	UZVAV	Reduction gear wheel
RG— 47	UZVAX	Reduction gear spindle
RG— 48	UZVAZ	Reduction gear coupling
RG— 49	UZVEC	Reduction gear coupling nut
RG— 51	UZVEF	Reduction gear oil retaining gland
RG— 52	UZVEG	Reduction gear primary shaft
RG— 53	UZVEL	Reduction gear pinion nut
RG— 54	UZVEM	Reduction gear case end cover (small)
RG— 69	UZVEP	Reduction gear oil lubricating gland ring
RG— 71	UZVES	Reduction gear case end cover
RG— 91	UZVEW	Reduction gear ball bearing housing ring (aft)
RG— 92	UZVID	Reduction gear ball bearing housing ring (frd.)
RG— 93	UZVIJ	Reduction gear coupling nut locking ring
RG— 94	UZVIN	Reduction gear dip stick (not illustrated)
RG— 95	UZVIR	Reduction gear dip stick knob (not illustrated)
RG— 97	UZVIT	Reduction gear case top cover
RG— 99	UZVIV	Reduction gear primary shaft ball bearing (aft)
RG—100	UZVIX	Reduction gear primary shaft ball bearing (frd.)
RG—101	UZVIZ	Reduction gear secondary shaft ball bearing (aft)
RG—102	UZVOB	Reduction gear secondary shaft ball bearing (frd.)
RG—104	UZVOC	Reduction gear drain plug



SERVICE FUEL TANK—MARINE ENGINES

PART NO.	CODE WORD	DESCRIPTION
VOM—2183	UZVOF	Service fuel tank
VOM—5022	UZVOG	Service fuel tank filler cap
VOM—7980	UZVOM	Service fuel tank flange
VOM—7981	UZVOP	Service fuel tank vent pipe