

SPARE PARTS BOOK

For the



Thornycroft

345

Marine Engine

Publications Part No. 5400902



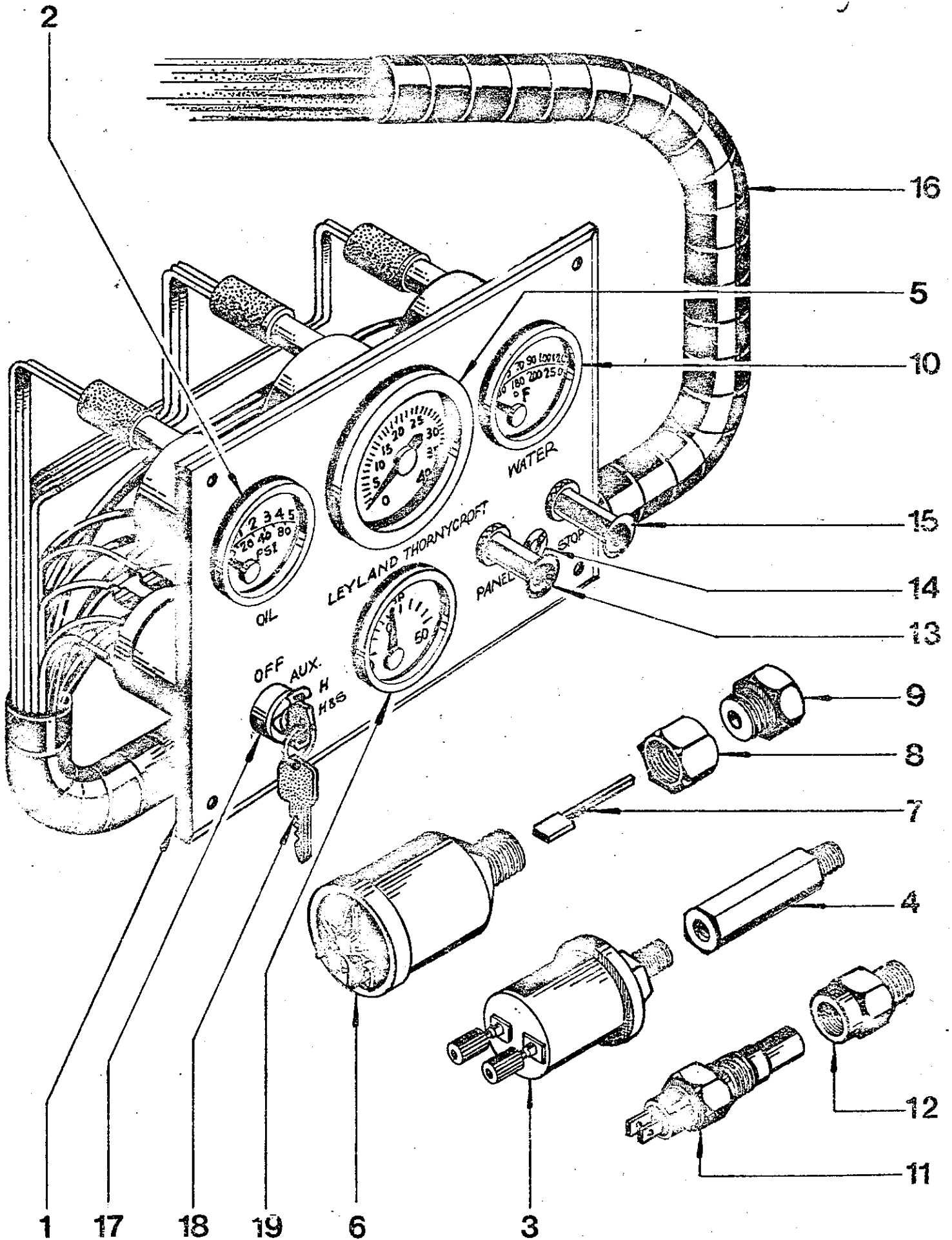
Thornycroft

345

1	PANEL	54008872
2	OIL PRESSURE GAUGE	54381349
3	SENDER OIL PRESSURE	54381376
4	ADAPTOR FOR ABOVE	54008947
5	TACHOMETER	54381387
6	SENDER TACHO	54381399
7	SHAFT	54381581
8	NUT	54381582
9	ADAPTOR	54381569
10	TEMP GAUGE	54381352
11	SENDER TEMP GAUGE	54381375
12	NOT USED	
13	PANEL SWITCH	54380361
14	WARNING LIGHT	54381608
	BOLB	54381393
15	STOP CONTROL	54380756
16	WIRING HARNESS (ENGINE)	54008937
	WIRING HARNESS (PANEL)	54008939
17	KEY TYPE STARTER SWITCH	54381445
18	LOCK BARREL & KEYS	54381446
19	AMMETER	54381338
	BRACKET	54008972
	FLEXIBLE MOUNT	54008948
	NUT	NF4
	WASHER	WA4
	PLATE	54008941
	CONTROL BOARD	54007766
	RELAY	54007767
	WARNING LIGHT CONTROL	54007768
	BOLT	54381611
	NUT	54381612
	WASHER	WA3

NOT ILLUSTRATED

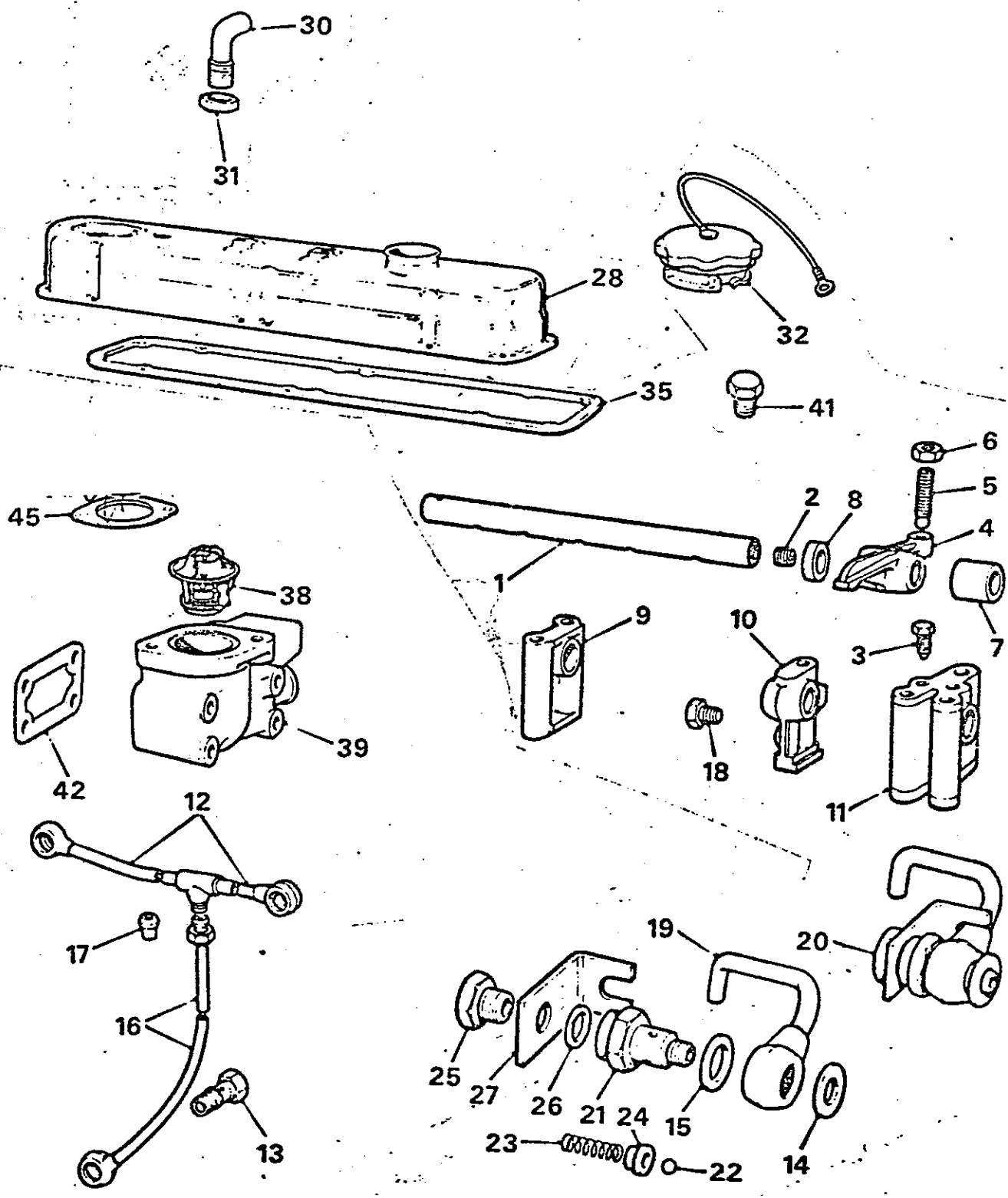
Electric Instruments And Sender Units



VALVE ROCKER SHAFT, COVER AND THERMOSTAT

1	37D 3039	Shaft-rocker	3
2	AMK 75	Plug	3
3	AMK 74	Screw-shaft locating	3
4	AMK 1756	Valve rocker	12
5	AEB 154	Screw-adjusting	12
6	AMK 720	Locknut-adjusting screw	12
7	AMK 1759	Washer-valve rocker spacing	6
8	AMK 1758	Washer-valve rocker spacing	2
8	AMK 1757	Washer-valve rocker spacing	10
9	AMK 1617	Bracket-rocker shaft-front and rear	2
10	AMK 1618	Bracket-rocker shaft-intermediate	2
11	CMK 904	Bracket-rocker shaft-centre	1
10	CMK 894	Bracket-rocker shaft-intermediate	1
11	AMK 1620	Bracket-rocker shaft-centre	1
12	CMK 912	Pipe-oil feed to rockers	1
13	AMK 1525	Pin-banjo-oil feed pipe	2
19	AMK 1366	Pipe-overflow	1
14	AMK 240	Washer-small	2
15	AMK 756	Washer-large	2
16	AMK 283	PIPE ASSEMBLY-OIL FEED	1
17	AMK 716	Nipple	1
13	AMK 1525	Pin-banjo-lower oil feed pipe	1
14	AMK 240	Washer	1
18	AMK 707	Plug-intermediate bracket	1
14	AMK 240	Washer (copper)	1
15	AMK 756	Washer	1
20	AMK 483	VALVE ASSEMBLY-RELIEF	1
21	AMK 484	Body	1
22	AMK 722	Ball	1
23	AMK 485	Spring	1
24	AMK 486	Seat	1
25	AMK 487	Plug	1
26	AMK 488	Washer (copper)	1
27	AMK 489	Washer-tab	1
30	37D 2494	Pipe-vent	1
31	1B 2261	Nut-vent pipe	1
32	12B 582	CAP ASSEMBLY-OIL FILLER	1
34	12A 403	Washer-cap	1
33	12A 402	CAP ASSEMBLY-OIL FILLER	1
34	12A 403	Washer-cap	1
35	CMK 1342	Washer-joint	1
38	GTS 101	Thermostat	1
39	86K 523	Body-thermostat	1
41	83H 0262	Plug-cylinder head	1
47	37D 3444	Pipe-water outlet	1
42	37D 3484	Joint-body	1
28	86K 964	ROCKER - COVER	1
45	AEB 170	JOINT - OUTLET PIPE	1

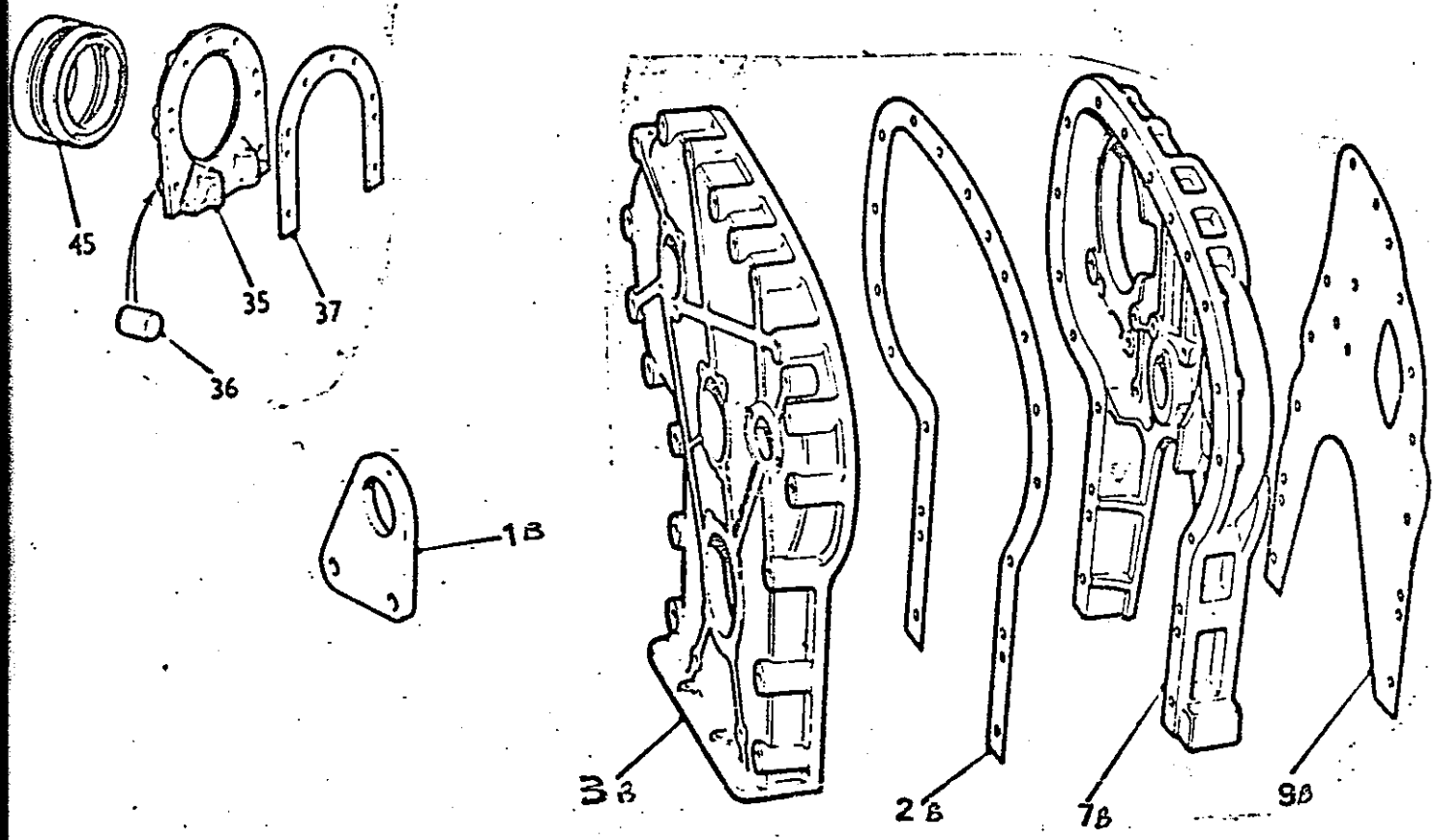
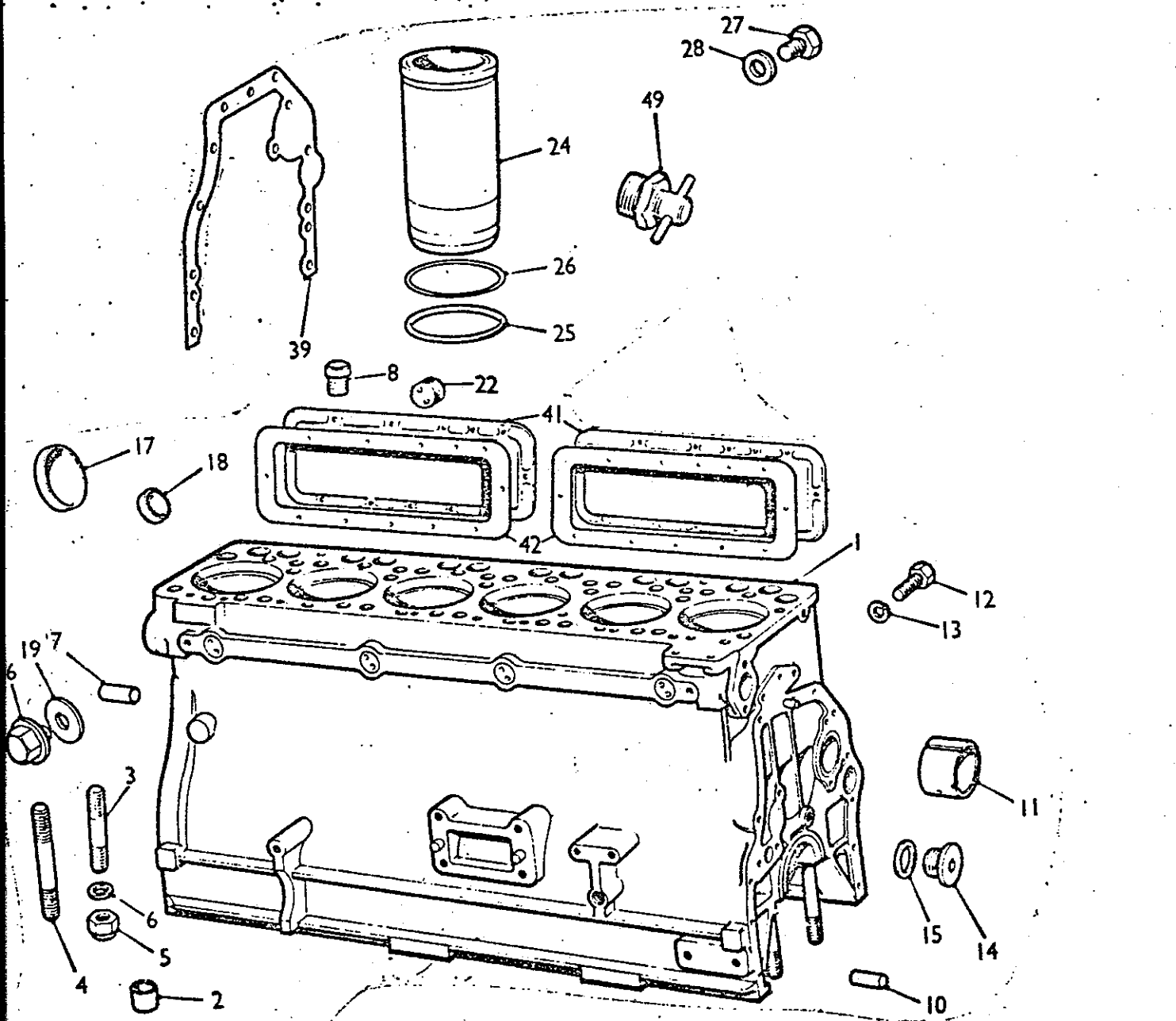
} Aluminium



CYLINDER BLOCK & TIMING GEAR CASING

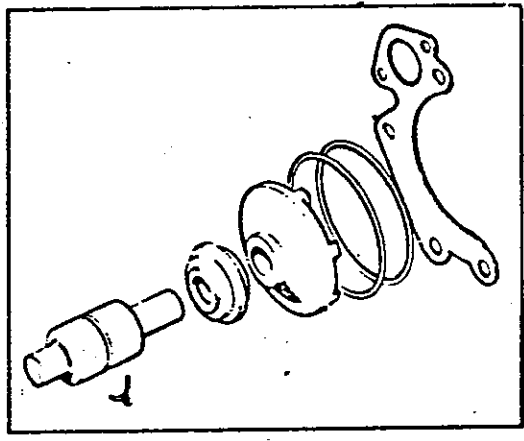
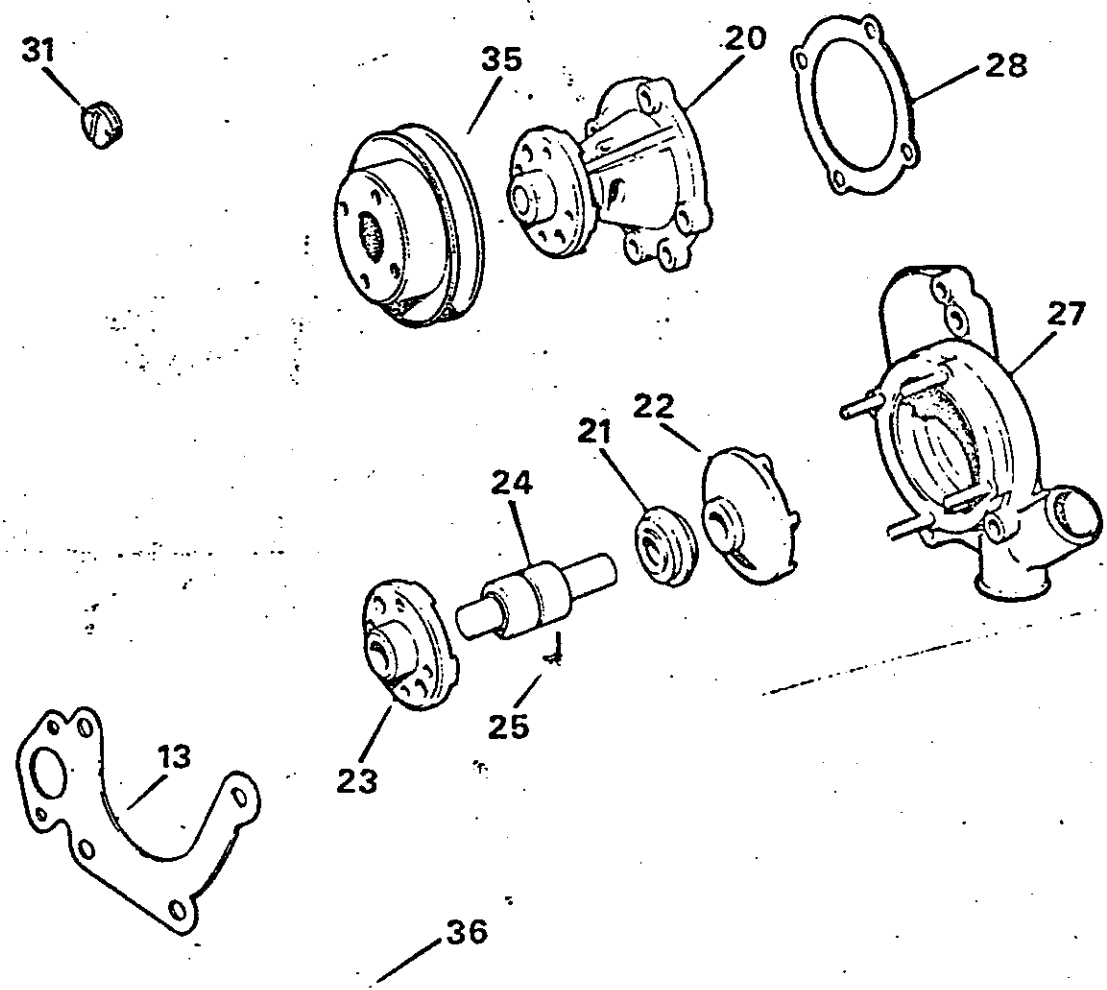
1	86K 974	BLOCK ASSEMBLY-CYLINDER	1
2	37D 87	Dowel-hollow-oil pump body to main bearing cap	2
3	37D 527	Stud-main bearing cap-long	2
4	37D 528	Stud-main bearing cap-short	12
5	88G 590	Nut-cleveloc	14
6	37D 91	Washer-plain	14
7	AMK 1017	Dowel-sandwich plate to block	3
8	86K 1078	Dowel-cylinder block to head	2
10	AMK 749	Dowel-timing case rear half to block	3
7	86K 414	Dowel-flywheel housing to block	3
11	86K 742	Bush-camshaft bearing	1
12	CMK 1383	Screw-bush locating	1
13	ATJ 2035	Washer-Seloc	1
14	CMK 1223	Plug-oil gallery-circular head	1
15	AMK 699	Washer-plug (copper)	2
16	AMK 707	Plug-water gallery (brass)	4
17	13H 6432	Plug-water gallery	1
18	37D 3478	Plug-core	6
9	AMK 240	Washer (copper)	2
	AEB 150	Union-oil gauge pipe	1
19	AMK 240	Washer (copper)	1
22	AEA 635	Plug-core-water gallery	3
24	86K 937	Liner-cylinder	6
25	86K 939	Ring-sealing-bottom	6
26	86K 938	Ring-sealing-top	6
27	2K 6164	Plug-oil drain	1
28	AMK 748	Washer (fibre)	1
49	ATJ 2093	Tap-drain	1
35	37D 531	Housing-oil seal	1
	HBN 0412	Screw-oil seal to block-long	7
	HZS 0407	Screw-oil seal to block-short	2
36	RPS 1222	Pin-roll	2
37	AMK 63	Joint-oil seal	1
	LWN 304	Washer-spring (HBN 412)	9
41	CMK 895	Cover-push rod	2
39	AMK 392	Joint	1
42	37D 334	Joint-cover	2
45	88G 587	Seal-lip type	1
1a	86K 155	Plate-lifting-front	1
2a	AMK 237	Gasket-timing case	1
9a	CMK 170	Washer-joint-casing to cylinder block	1
3a	86K 454	Case-timing gear front half	1
7a		Case-timing gear rear half	1

(E) 19340 on



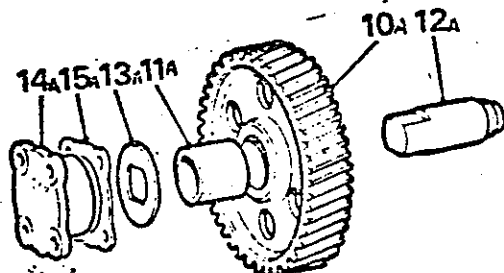
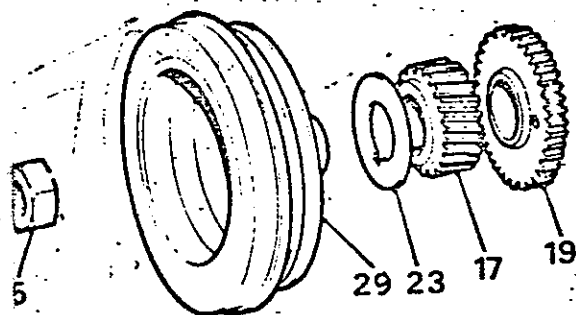
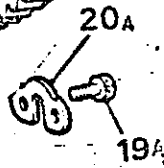
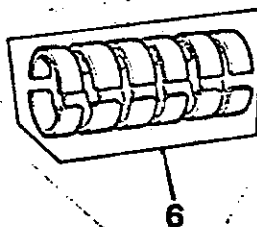
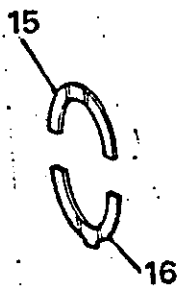
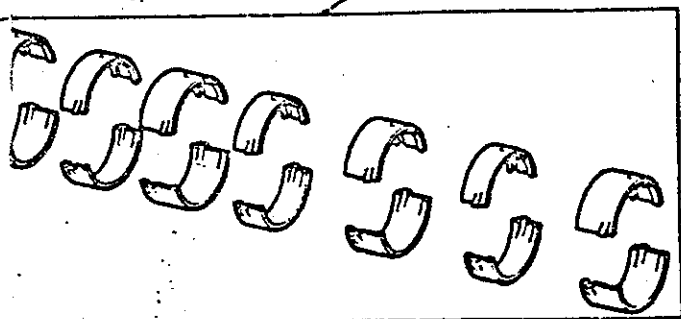
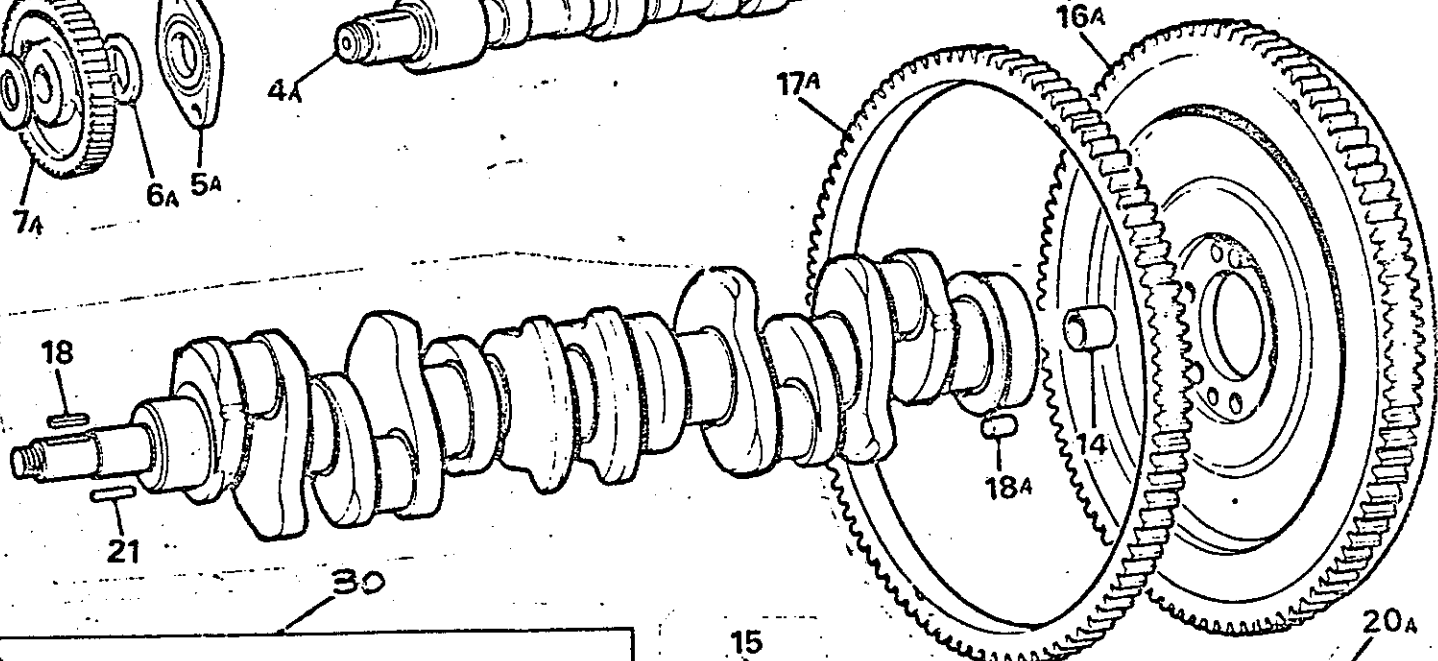
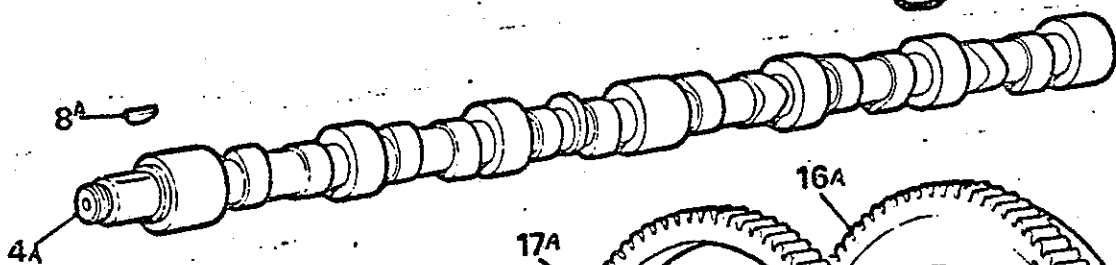
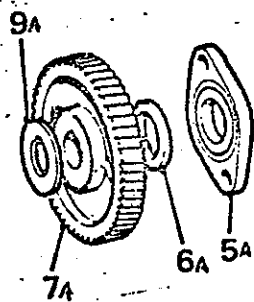
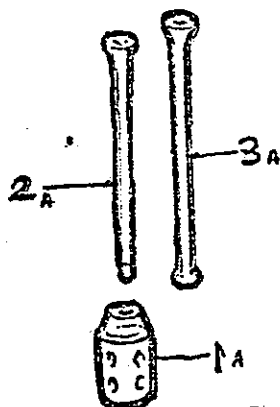
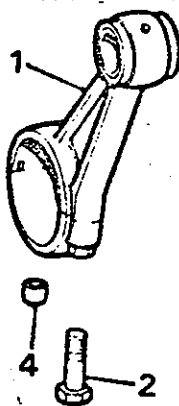
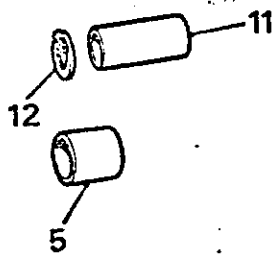
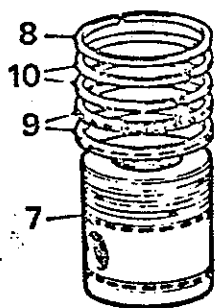
WATER PUMP

20	CMK 2044	PUMP ASSEMBLY-WATER-FRONT HALF	1
21	38G 446	Seal	1
22	CMK 2046	Impeller	1
23	CMK 2047	Hub-fan and pump	1
24	12A 1802	Bearing	1
25	2A 778	Wire-bearing locating	1
	HBN 0611	Bolt-impeller housing to block	1
	HBN 0620	Bolt-impeller housing to block	3
	HBN 0511	Bolt-water outlet flange to block	2
27	86K 537	BODY ASSEMBLY-REAR HALF	1
	FHS 0512	Stud	4
28	37D 448	Washer-joint-pump to rear half	1
13	CMK 199	Joint-rear half to cylinder block	1
	NH 605041	Nut	1
31	37D 1756	Plug-connector	1
35	CMK 853	Pulley	1
36	8G 2421	Kit-repair	1



FLYWHEEL,CONNECTING RODS, PISTONS, CRANKSHAFT STARTER RING, TAPPETS AND PUSH-RO

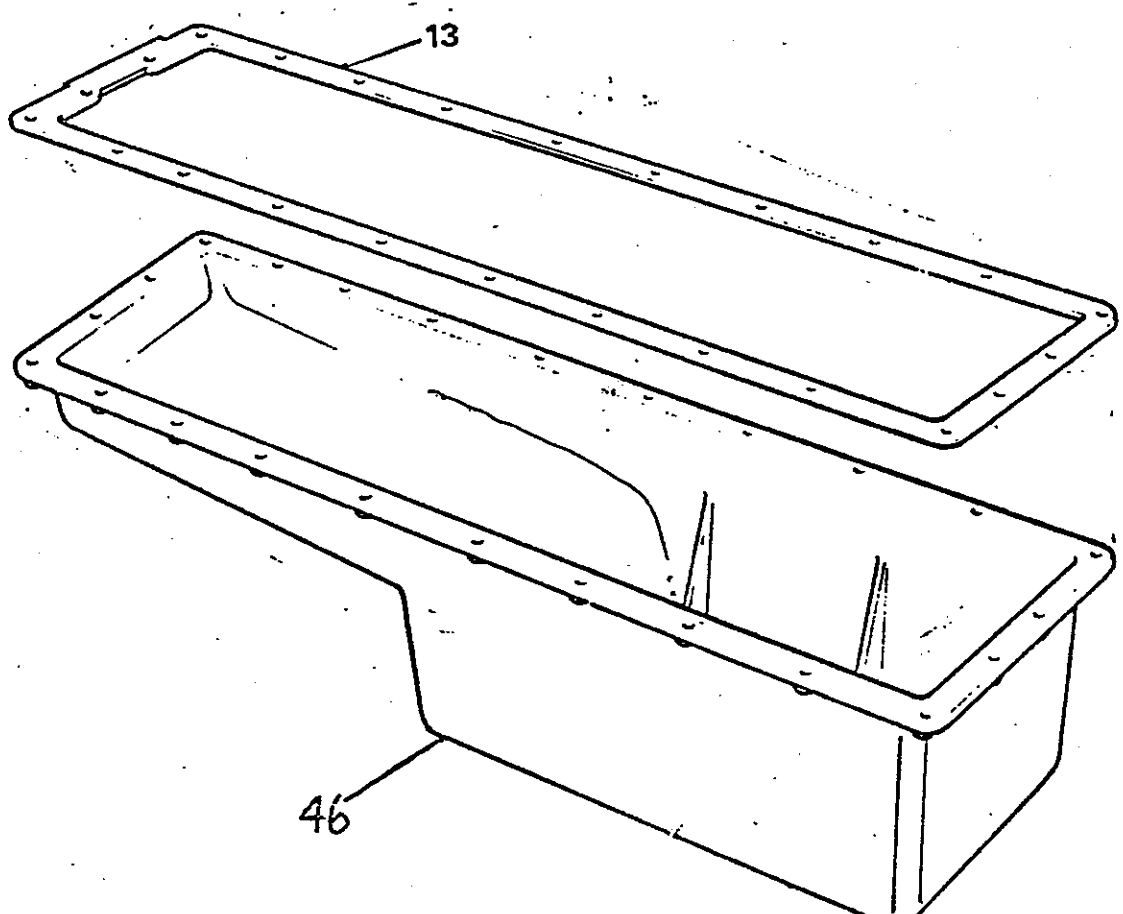
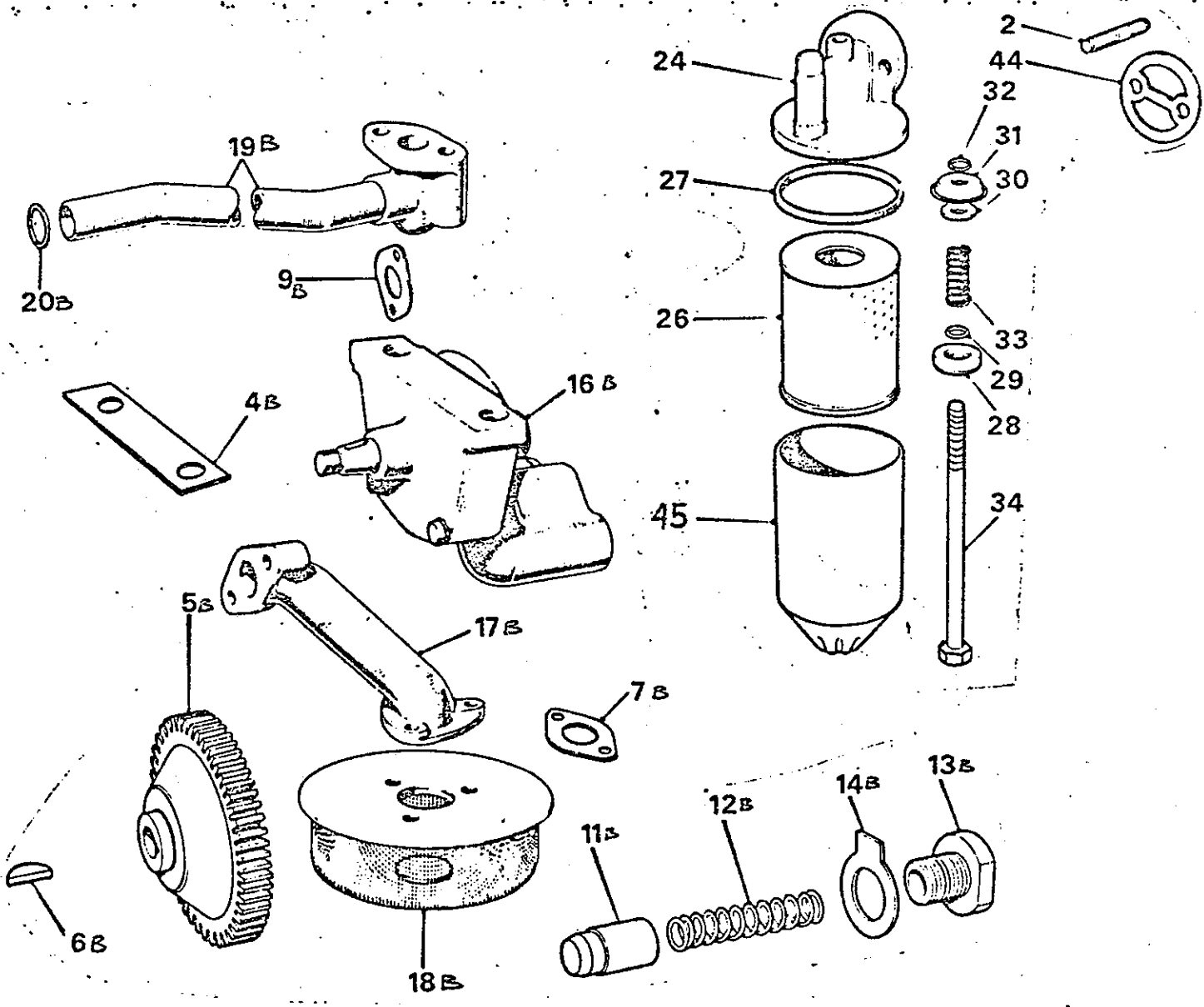
1	86K 1093	ROD ASSEMBLY-CONNECTING	6	
2	86K 1191	Bolt	12	
4	AMK 602	Dowel-hollow	12	
5	37D 3037	Bush-gudgeon pin	6	
		BEARING-CONNECTING ROD		
6	3G 2480	Standard	1 set	
6	8G 2480 15	.015" (.381mm) U/S	1 set	
6	8G 2480 30	.030" (.762mm) U/S	1 set	
6	8G 2480 45	.045" (1.143mm) U/S	1 set	
		BEARING-MAIN		
30	8G 2479	Standard	1 set	
30	8G 2479 15	.015" (.381mm) U/S	1 set	
30	8G 2479 30	.030" (.762mm) U/S	1 set	
30	8G 2479 45	.045" (1.143mm) U/S	1 set	
7	86K 949	PISTON ASSEMBLY-STANDARD	6	
8	86K 952	Ring-compression-standard	6	CHROME
9	86K 954	Ring-scraper-standard	12	OXIDIZED
10	86K 953	Ring-taper faced-standard	12	
11	86K 951	Pin-gudgeon	6	
12	CCN 222	Clip-gudgeon pin	12	
13	86K 979	CRANKSHAFT ASSEMBLY	1	
14	AMK 97	Bush	1	
	8G 2701	Crankshaft-reground (with bearings)	1	UK only
15	37D 533	Washer-thrust-upper	2	
16	37D 534	Washer-thrust-lower	2	
17	CMK 183	Wheel-crankshaft	1	
18	AMK 96	Key-crankshaft wheel	1	
19	37D 3472	Gear-oil pump driving	1	
21	AMK 96	Key-pulley	1	
23	AMK 1353	Thrower-oil-crankshaft	1	
25	37D 384	Nut-pulley	1	
29	86K 192	Pulley-crankshaft	1	
1A	AMK 20	Tappet-valve	12] Alternatives, interchangeable
2A	AMK 85	Push-rod-tubular type	12	
3A	AMK 1793	Push-rod-solid type	12	
4A	37D 598	Camshaft	1	
5A	86K 811	PLATE ASSEMBLY-CAMSHAFT	1	
6A	86K 813	Washer-thrust	1	
	HNS 0507	Screw	2	
	LWN 305	Washer-spring	2	
7A	37D 599	Hub and gear-camshaft timing	1	
8A	WKN 809	Key-hub	1	
9A	AMK 112	Washer-tab	1	
10A	CMK 185	GEAR ASSEMBLY-IDLER	1	
11A	CMK 187	Bush	1	
12A	CMK 188	Shaft-idler gear	1	
13A	CMK 189	Washer-thrust-idler gear	1	
14A	CMK 192	Bearing-outrigger	1	
15A	CMK 193	Washer-joint-bearing	1	
	HNS 0507	Screw	4	
	LWN 305	Washer-spring	4	
17A	CMK 181	Ring-starter	1	
18A	AMK 1041	Dowel-flywheel to crankshaft	2	
19A	37D 418	Bolt-flywheel to crankshaft	6	
20A	37D 417	Washer-tab	3	
16A	54008891	FLYWHEEL ASSEMBLY	1	



OIL PUMP OIL SUMP, AND OIL FILTER

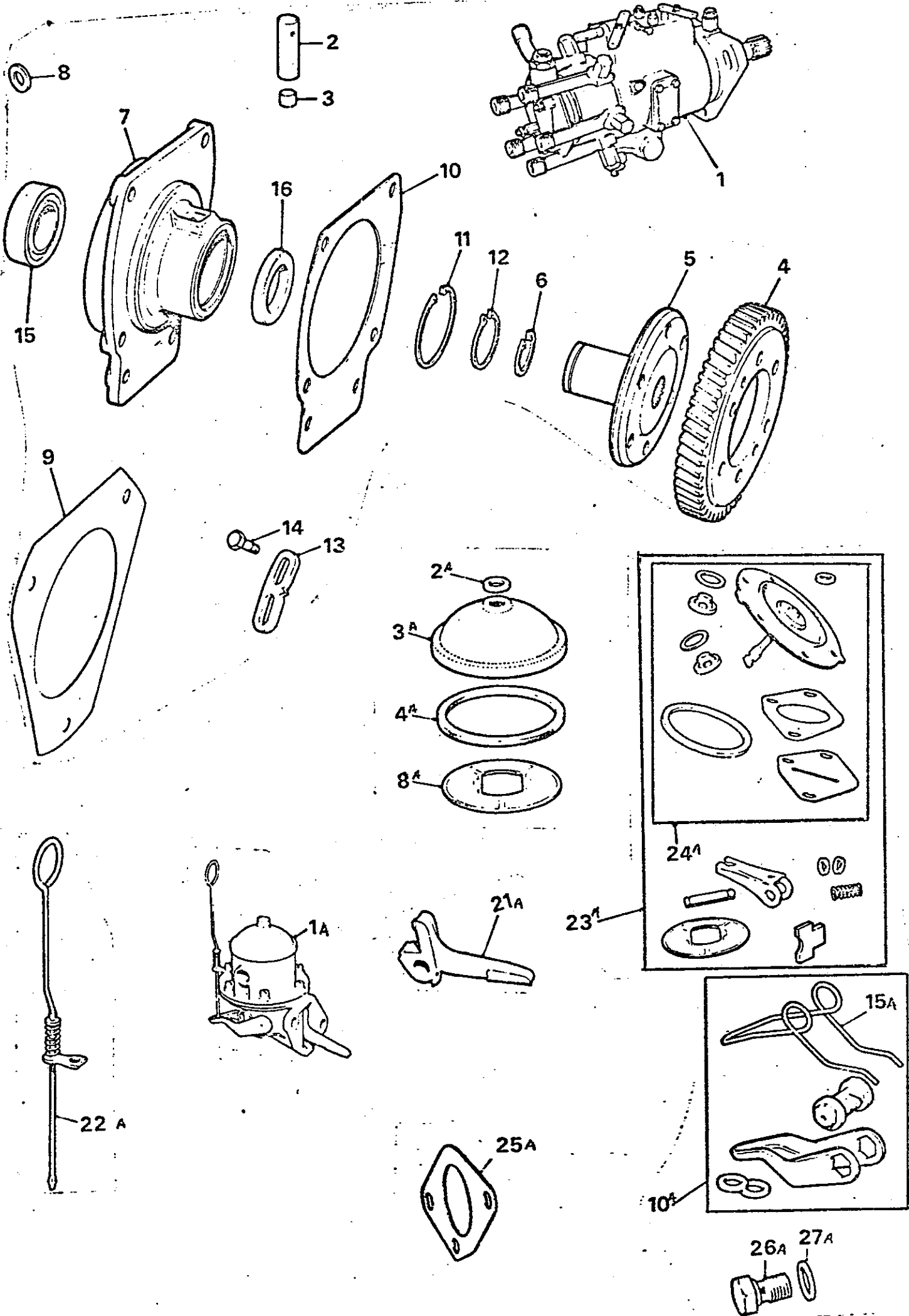
FILTER-OIL-FULL-FLOW			
24	27H 8711	Head	1
25	54008679	Sump	1
26	GFE 130	Element	1
27	12G 1824	Ring-sealing	1
28	27H 4573	Collar-centre-bolt	1
29	17H 2442	Seal	1
30	17H 2443	Seal	1
31	17H 2444	Guide-element-bottom	1
32	17H 2445	Circlip	1
33	17H 2446	Spring	1
34	17H 2447	Bolt-centre	1
	PWZ 107	Washer	1
	HBZ 0510	Bolt-sump to cylinder block	22
	BL 605201	Bolt-sump to cylinder block	2
	HNS 0509	Bolt-sump to cylinder block	24
	WA 108051	Washer-plain	24
	LWN 305	Washer-spring	24
13	37D 337	Joint-sump to cylinder block	1
26	GFE 130	Element	1
44	CMK 133	Joint-filter to crankcase	1
2	86K 373	Stud-filter to cylinder block	2
45	27H 6604	Container	1
46	54381361	Sump	1

PUMP ASSEMBLY-OIL			
16B	13H 3391	Valve-relief	1
11B	37D 1558	Spring-valve	1
12B	37D 1559	Plug	1
13A	37D 218	Washer-plug	1
14B	37D 219	Shim-oil pump body and front main bearing cap-.002" (.051mm)	A/R
4B	37D 223	Shim-oil pump body and front main bearing cap-.003" (.076mm)	A/R
4B	37D 224	Gear-driven	1
5B	37D 3452	Key-gear	1
6B	WKN 405	Pipe-oil suction	1
17B	37D 1269	Joint-suction pipe to pump	1
7B	AMK 111	Bolt-pump to suction pipe	2
	HBN 0511	Washer-plain	2
	WA 108051	Washer-spring	2
	LWN 305	Strainer-oil	1
18B	86K 1092	Bolt-suction pipe to strainer	3
	HZS 0404	Washer-plain	3
	PWN 104	Washer-spring	3
	LWN 304	Pipe-oil delivery	1
19B	37D 1270	Joint-elbow-oil delivery pipe	1
9B	AMK 152	Screw-delivery pipe to cylinder block	1
	HZS 0506	Bolt-delivery pipe to cylinder block	1
	HBN 0518	Washer-spring	2
	LWN 305	'O' ring-delivery pipe to oil pump	1
20B	TRS 1216		



FUEL LIFT PUMP FUEL INJECTION PUMP—ROTARY (C.A.V.)—INJECTION PUMP DRIVE

1	83H 0471	Pump assembly—fuel injection	1
1	83H 0472	Pump assembly—fuel injection	1
2	27H 2844	Sleeve—locking	1
3	11F 129	Plug—maximum speed screw	1
4	CMK 190	Gear—timing	1
5	37D 1025	Hub—gear	1
6	CCN 210	Circlip—hub—internal	1
	HZS 0507	Screw—gear to hub	6
	LWN 305	Washer—spring	6
7	86K 182	HOUSING ASSEMBLY—BEARING DRIVE	1
	‡HS 0511	Stud—pump to housing	3
	FNZ 505	Nut	3
8	AMK 2413	Washer—plain	3
9	AMK 2199	Joint—pump to housing	1
	HNS 0508	Screw—housing to timing case	4
	LWN 306	Washer—spring	4
	FHS 0510	Stud—housing to timing case	2
	FNZ 505	Nut	2
	LWN 305	Washer—spring	2
10	AMK 2530	Joint—housing to timing case	1
11	CCN 232	Circlip—internal	1
12	CCN 116	Circlip—external	1
13	12H 380	Indicator—timing	1
14	88G 271	Screw—indicator to bearing housing	2
15	AMK 767	Bearing—pump drive	2
16	37D 1017	Piece—distance—bearing	1
1	83H 0471	Pump assembly—fuel injection	1
1	83H 0472	Pump assembly—fuel injection	1
2	27H 2844	Sleeve—locking	1
3	11F 129	Plug—maximum speed screw	1
9	AMK 2199	Gasket—bracket to pump	1
8	AMK 2413	Washer—plain	3
1A	13H 3375	PUMP ASSEMBLY—FUEL LIFT	1
	HZS 0405	Screw—head	1
2A	7H 1408	Gasket—head screw	1
3A	7H 1405	Cover—filter	1
4A	17H 301	Gasket—cover	1
8A	7H 1477	Filter—screen	1
10A	H7—69	PRIMER PARTS SET	1
15A	7H 1481	Spring—primer handle	1
21A	17H 178	Arm—rocker	1
22A	7H 376	Rod—pull—primer	1
23A	8G 8845	KIT—REPAIR—MAJOR	1 set
24A	8G 8844	KIT—REPAIR—PRIMARY	1 set
25A	37D 2891	Joint—pump to cylinder block	1
	HNS 0507	Bolt	2
26A	AMK 925	Pin—banjo to pump	1
27A	ARH 517	Washer—pin	2

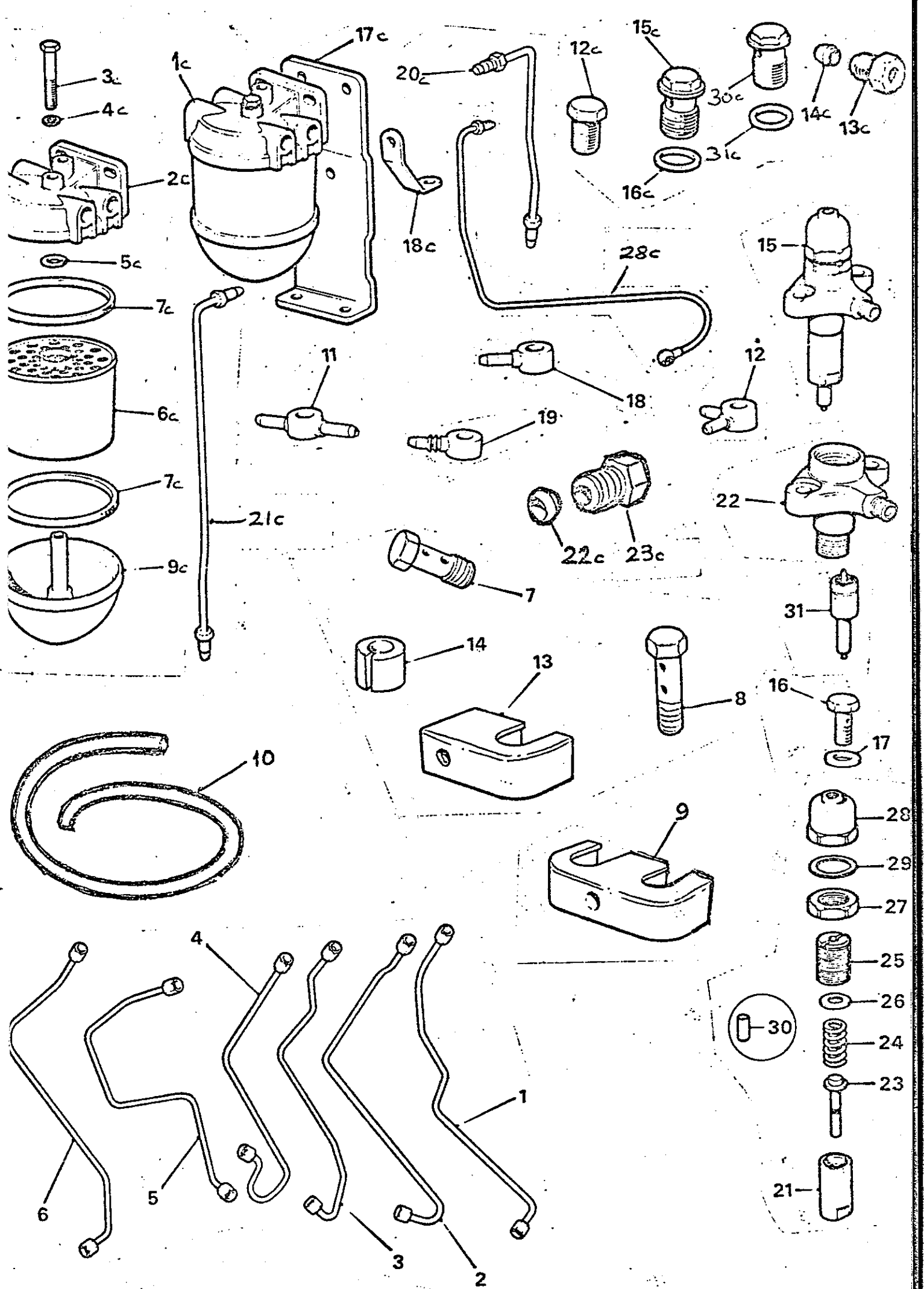


FUEL INJECTION PIPES INJECTORS FUEL FILTER AND PIPES (C.A.V.)

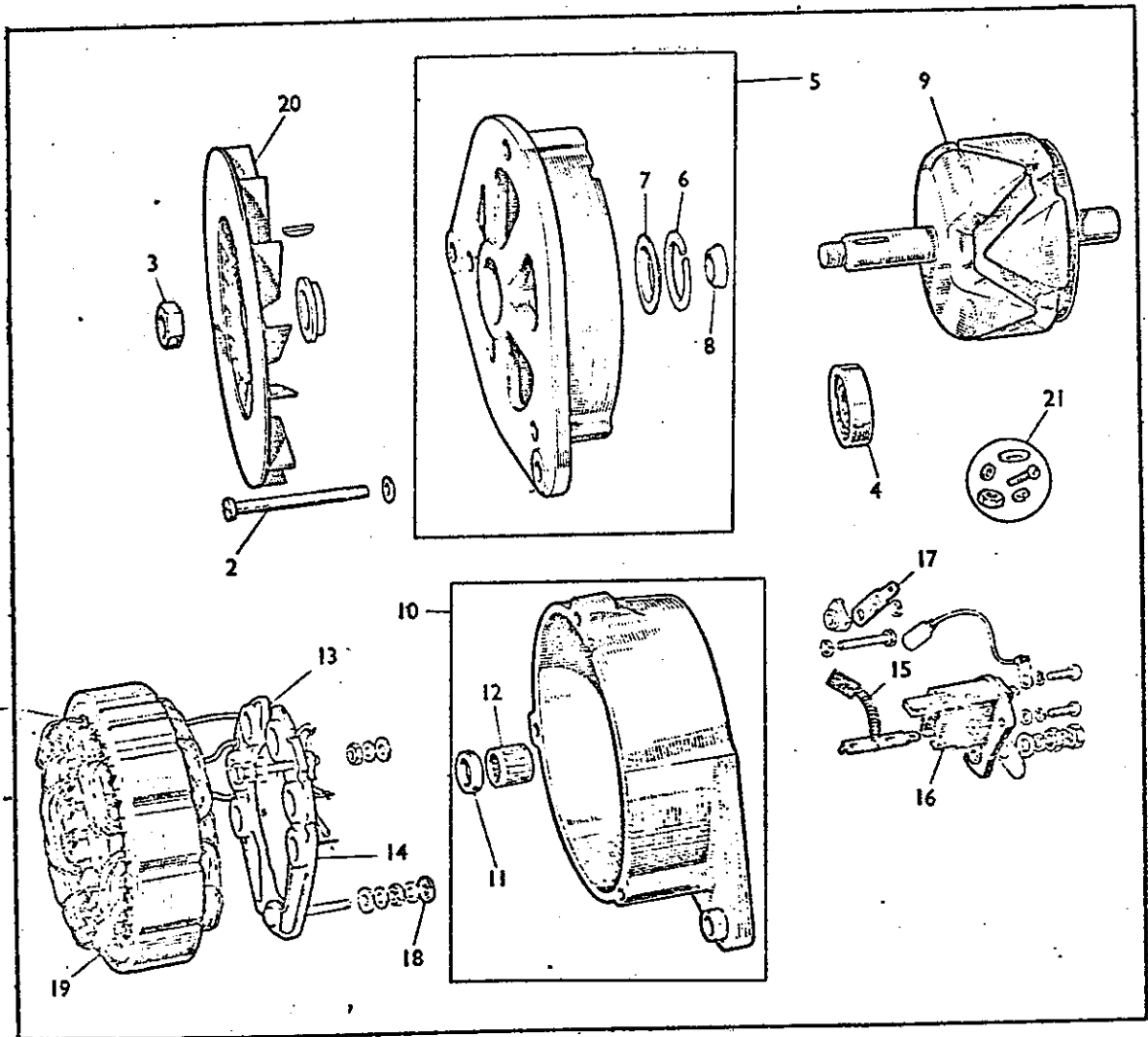
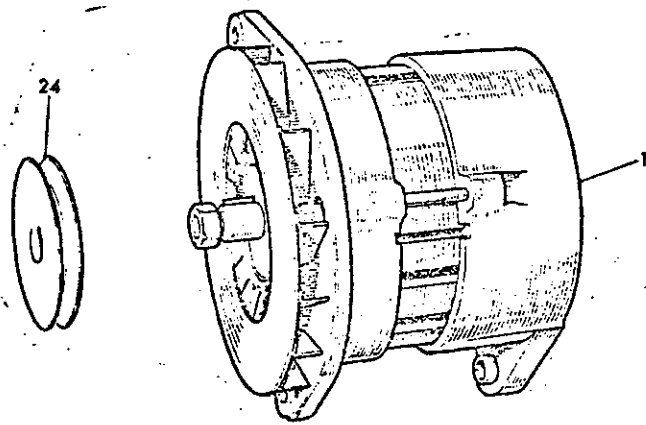
PIPE-FUEL INJECTION PUMP

1	86K 1026	No. 1 injector	1
2	86K 1028	No. 2 injector	1
3	86K 1030	No. 3 injector	1
4	86K 1032	No. 4 injector	1
5	86K 1034	No. 5 injector	1
6	86K 1036	No. 6 injector	1
12	CMK 335	Banjo-right-angled-front	1
7	AMK 1266	Pin-banjo-double-No. 4 pipe	1
10	97H 2772	Pipe-spill-off (nylon)	A/R
11	CMK 334	Banjo-straight through-centre and intermediate pipes	4
8	11B 427	Pin-banjo-double	1
16	11B 357	Pin-banjo	6
17	11B 206	Washer-banjo pin	12
18	CMK 336	Banjo-single ended-rail to filter	1
19	13H 3342	Banjo-single ended-rail to filter	2
9	AMK 1716	Clamp-injection pipes-Nos. 1,2,5,6	2
13	BMK 819	Clamp-injection pipes-3,4	2
14	11B 284	Bush	6
	CHS 2513	Stud-clamp to manifold	2
	CHS 0515	Stud-clamp to manifold	2
15	13H 6378	INJECTOR ASSEMBLY (C.A.V.)	6
21	AAK 444	Nut-nozzle cap	6
22	17H 8671	Body	6
23	AAK 440	Spindle	6
24	27H 6321	Spring	6
25	17H 8672	Nut-spring cap	6
26	27H 6982	Washer-spring cap nut	6
27	AAK 415	Locknut	6
28	7H 1864	Nut-nozzle holder cap	6
29	AAK 435	Joint-locknut and cap nut	12
30	27H 2300	Dowel-plain-2.93mm	A/R
30	27H 2301	Dowel-plain-2.94mm	A/R
31	13H 6379	Nozzle	6
	HBN 0511	Bolt	12
	LWN 305	Washer-spring	12

1c	83H 475	FILTER ASSEMBLY-FUEL	1
2c	27H 6654	Cover	1
3c	17H 6824	Bolt-centre	1
4c	37H 574	Washer	1
5c	37H 575	Ring-element sealing	1
6c	37H 7937	Element	1
7c	37H 2051	Ring-cover sealing	1
7c	37H 2051	Ring-base sealing	1
9c	37H 7938	Base	1
12c	37D 1929	Plug-bleed-fuel filter	1
13c	BMK 600	Nut-pipe connection	2
14c	2K 5148	Olive	2
15c	13H 1515	Pin-banjo	1
16c	86K 172	Washer-banjo pin	2
17c	37D 1018	Bracket-fuel filter support	1
18c	37D 2826	Bracket-steady-filter	1
20c	86K 998	PIPE ASSEMBLY-FUEL-FILTER TO INJECTION PUMP	1
21c	86K 1000	PIPE ASSEMBLY-FUEL-INJECTOR PUMP TO FILTER	1
22c	BMK 605	Olive	4
23c	BMK 606	Nut	2
28c	86K 218	PIPE ASSEMBLY-FUEL-LIFT PUMP TO FILTER	1
16c	AMK 925	Pin-banjo-pipe-lift to filter	1
17c	ARH 517	Washer-pin (fibre)	2



1	54007765	12 volt ALTERNATOR ASSEMBLY TYPE 11AC (Insulated return) less Fan. Dispatch No. 23523D	1
2	37H 1527	BOLT, through-fixing	3
3	47H 5139	NUT, shaft	1
	LWN 207	WASHER, shaft	1
4	47H 5431	BEARING	1
5	37H 1877	BRACKET Assy, drive end	1
6	37H 1878	CIRCLIP	1
7	37H 879	PLATE, bearing retaining	1
8	27H 3832	'O' RING, oil seal	1
9	37H 4169	ROTOR	1
10	37H 1880	BRACKET Assy, slip-ring end	1
11	37H 1881	SEAL	1
12	17H 8689	BEARING, needle-roller	1
13	37H 2885	HEATSINK (with cathode base diodes)	1
14	37H 3798	HEATSINK (with anode base diodes)	2
15	17H 8692	BRUSH, spring, Lucar	1
16	37H 3652	BRUSH BOX (bakelite)	1
17	47H 5530	CONNECTOR, cut-out, Lucar	5
18	17H 5599	WASHER, insulating	1
	37H 2888	CONNECTOR, main, Lucar	1
19	37H 3096	STATOR	1
20	13H 2177	FAN, alternator CAV No.54216148	1
21	17H 8695	SUNDRY PARTS	1
22	54007655	BRACKET, support, alternator	1
24	54380157	PULLY, alternator	1

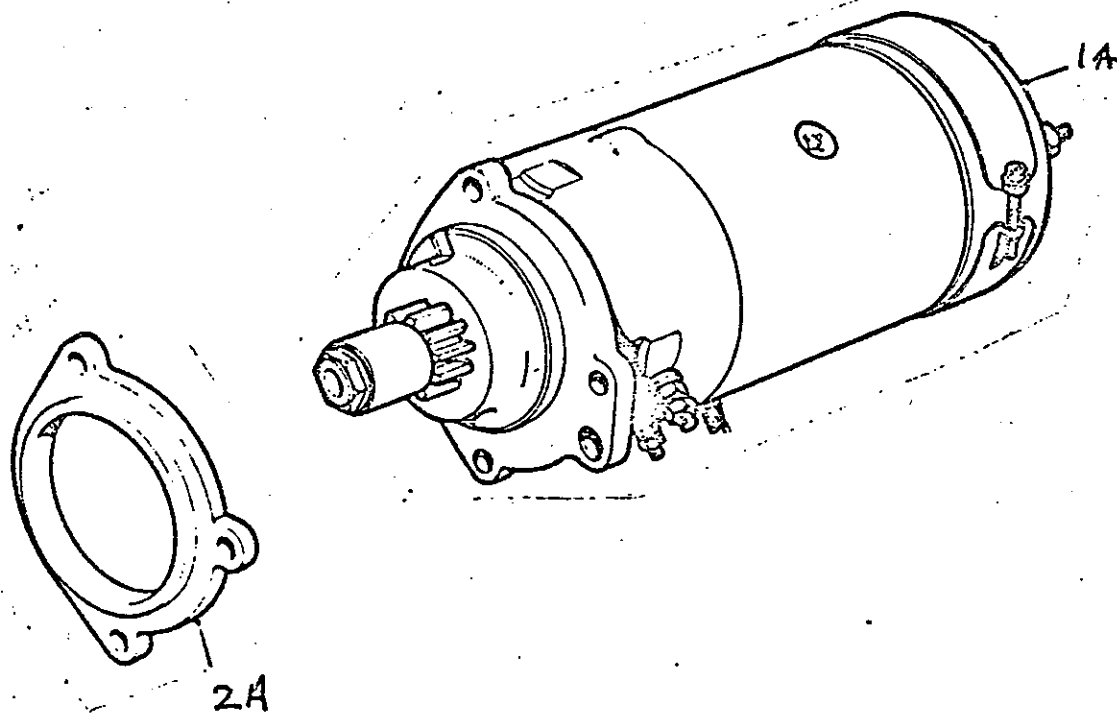


STARTER

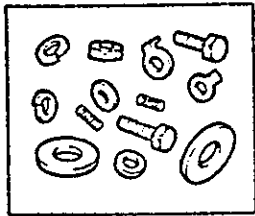
12 VOLT

17	83H 181	STARTER ASSEMBLY (M50 TYPE)	1
2	37H 6164	Collar assembly—field	1
3	37H 6166	Bush—kit	1
4	37H 6173	Armature D*	1
5	37H 6171	Brake shoe and spring kit	2
19	37H 7111	Bracket—commutator end—kit	1
7	27H 5932	Spring—brush tension	1 set
8	27H 6929	Brush—kit	1
10	37H 7113	Drive assembly—kit	1
11	37H 7116	Bracket—drive end	1
13	37H 7114	Solenoid	1
23	37H 7029	Plate and brush mounting	1
24	37H 7112	Sealing rubber kit	1
25	37H 7115	Bolt—through fixing	2
16	37H 6165	Sundry parts kit	1
	HBN 0718	Bolt—starter to clutch housing	3
	LWN 307	Washer—spring	3
	FNZ 507	Nut	3
	PWZ 107	Washer—plain	3

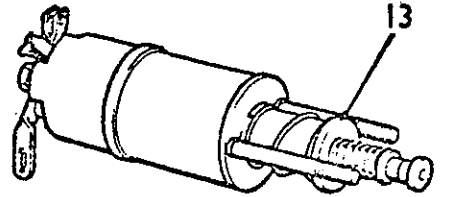
STARTER 24 VOLT.



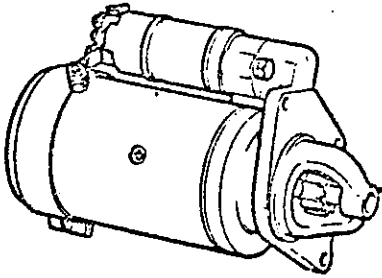
1A	54381284	STARTER ASSEMBLY	1
2A	CMK 203	DISTANCE PIECE.	



16

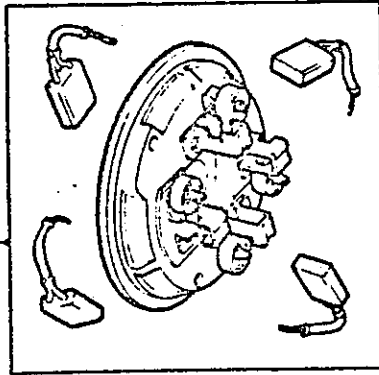


13

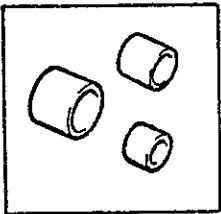
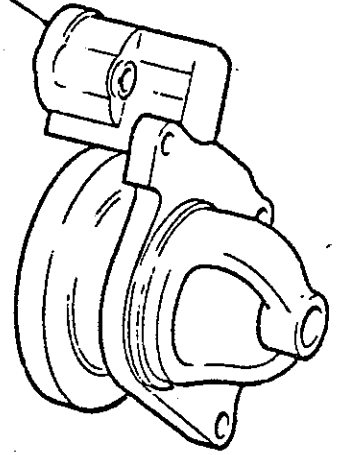


17

19

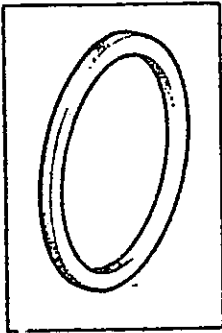
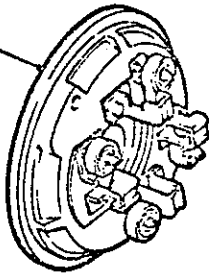


11

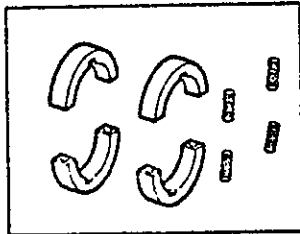


23

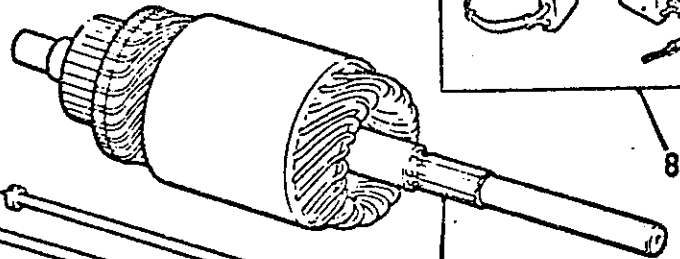
3



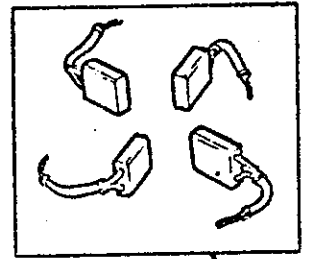
24



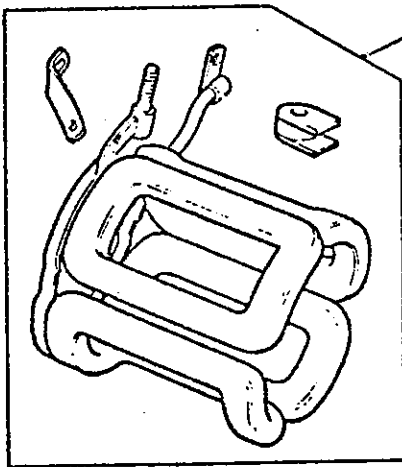
5



4



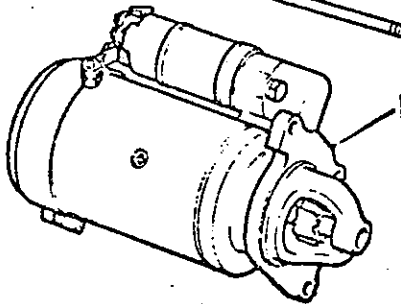
8



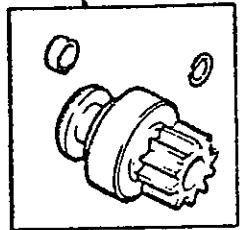
2



25



1



10

ENGINE SERVICE KITS

78G 1397	GASKET SET--DECARBONIZING	1
86K 622	Joint--cylinder head	1
AMK 122	Joint--exhaust manifold	4
AMK 9313	Joint--exhaust flange	1
AMK 125	Joint--air manifold	3
CMK 1342	Joint -valve rocker cover	1
AMK 80	Seal--oil--exhaust valve	6
AMK 1572	Seal--oil--inlet valve	6
78G 1298	GASKET SET--SUPPLEMENTARY	1
37D 334	Joint--cover--push-rod	2
37D 337	Joint--sump	1
AMK 1553	Joint--venturi	1
AMK 237	Joint--timing gear case	1
CMK 452	Joint--timing gear case	1
CMK 170	Joint--timing gear case to block	1
AMK 63	Joint--rear cover plate	1
AMK 392	Joint--sandwich plate	1
AMK 57	Joint--rear lifting plate	1
AEB 160	Joint--thermostat body	1
37D 3484	Joint--thermostat body	1
AEB 170	Joint--water outlet body	1
AMK 152	Joint--oil delivery elbow	1
AMK 111	Joint--oil pump flange and delivery pipe	2
AMK 744	Joint--oil relief valve body	1
AMK 121	Joint--front cover blanking plate	1
CMK 133	Joint--oil filter to block	1
CMK 199	Joint--water pump (front half to rear half)	1
37D 2891	Joint--fuel lift pump	1
BMK 652	Joint--fuel lift pump	1